



# Uploading My Presentation for PHS Directions

1. Access the [CERCA Canvas course](#) and select **Enroll in Course**.
2. Select the **CERCA: Celebration of Excellent in Research and Creative Activity** course from your dashboard.
3. Scroll down to the **Provost's Honors Symposium** menu on the bottom of the course page.

▼ Provost's Honors Symposium
 Centennial room
 Menominee room
 Ho-Chunk room
 Chancellors room

4. Select the “room” you were instructed to present in, per the email sent out by the Honors Program.

## 1. Structure of Symposium

This year's symposium will feature 47 presentations by approximately 109 students in dozens of fields of intellectual inquiry in an online environment.

**Presentations will be uploaded to the PHS module of the CERCA course in Canvas between May 22 and May 29.** Presentations have been divided into “rooms” that broadly group the topics. The “schedule” can be found at [this link](#), on the PHS website (<https://uwec.ly/PHS>), and located on the overview page of the PHS module in Canvas. Your presentation, “A Description and Analysis of the Participation and Benefits/Challenges for the Supplemental Nutrition Assistance Program-Market Match Program at the Eau Claire Farmers' Market”, is **presentation # 5 and scheduled for the Centennial room** (or, page under the PHS module in Canvas). The presentation # is indexed in the abstract/program to search for specific presenters or nominators and is the order that the presentations are listed in Canvas.

▼ Provost's Honors Symposium
 Centennial room
 Menominee room
 Ho-Chunk room
 Chancellors room

5. Find the title of your presentation inside the “room” and click on it.

4. [Implementing an Educational Initiative on Electronic Cigarettes and Vaping](#)

Presenters: Lindsey Boehm & Heidi Pardon

Faculty nominator: Diane Marcyjanik, Nursing & Lyndsey Strang, Nursing Ph. D candidate

5. [A Description and Analysis of the Participation and Benefits/Challenges for the Supplemental Nutrition Assistance Program-Market Match Program at the Eau Claire Farmers' Market](#)

Presenters: Olivia Jonasen, Zach Ledwith, Aubrey Liew, & Katelyn Reckin

Faculty nominator: Eric Jamelske, Economics

6. [Characterizing the Allocation, Issuance and Usage of Benefits Offered Through the Women, Infants and Children \(WIC\) and Senior Assistance Farmers Market Fruit and Vegetable Programs in Wisconsin](#)

Presenters: Karlien Asplund, Ethan Blaney, Hailey Reynolds, & Shelly Stephani

Faculty nominator: Eric Jamelske, Economics

6. Upload your presentation by selecting **Reply**. You may also want to subscribe to your discussion. By selecting *Subscribe*, you will receive an email message when someone posts questions or remarks to your oral presentation.

Faculty nominator: Eric Jamelske, Economics

Research suggests that food insecurity is a significant issue facing many American households. There is also evidence that participants in the Supplemental Nutrition Assistance Program (SNAP) tend to purchase fewer healthy foods including fruits and vegetables (FV) compared to non-SNAP households. This study reports on administrative data from 2014-19 and survey data from 2019 for a program that doubles SNAP benefits up to \$10/week at the Eau Claire Farmers' Market (EC FM MMP). Our results show that the EC FM MMP has significantly increased both the number of SNAP shoppers using the farmers market and the frequency of visits. Additionally, survey responses reveal that significant percentages of SNAP shoppers report purchasing/eating more FV and face a reduced level of food insecurity from using the EC FM MMP. Despite these benefits, program data indicate that the number of households using the EC FM MMP in 2019 represented less than 10% of the EC County SNAP caseload. Moreover, nearly half of the households using the EC FM MMP made only one visit to the market in 2019.

Search entries or author

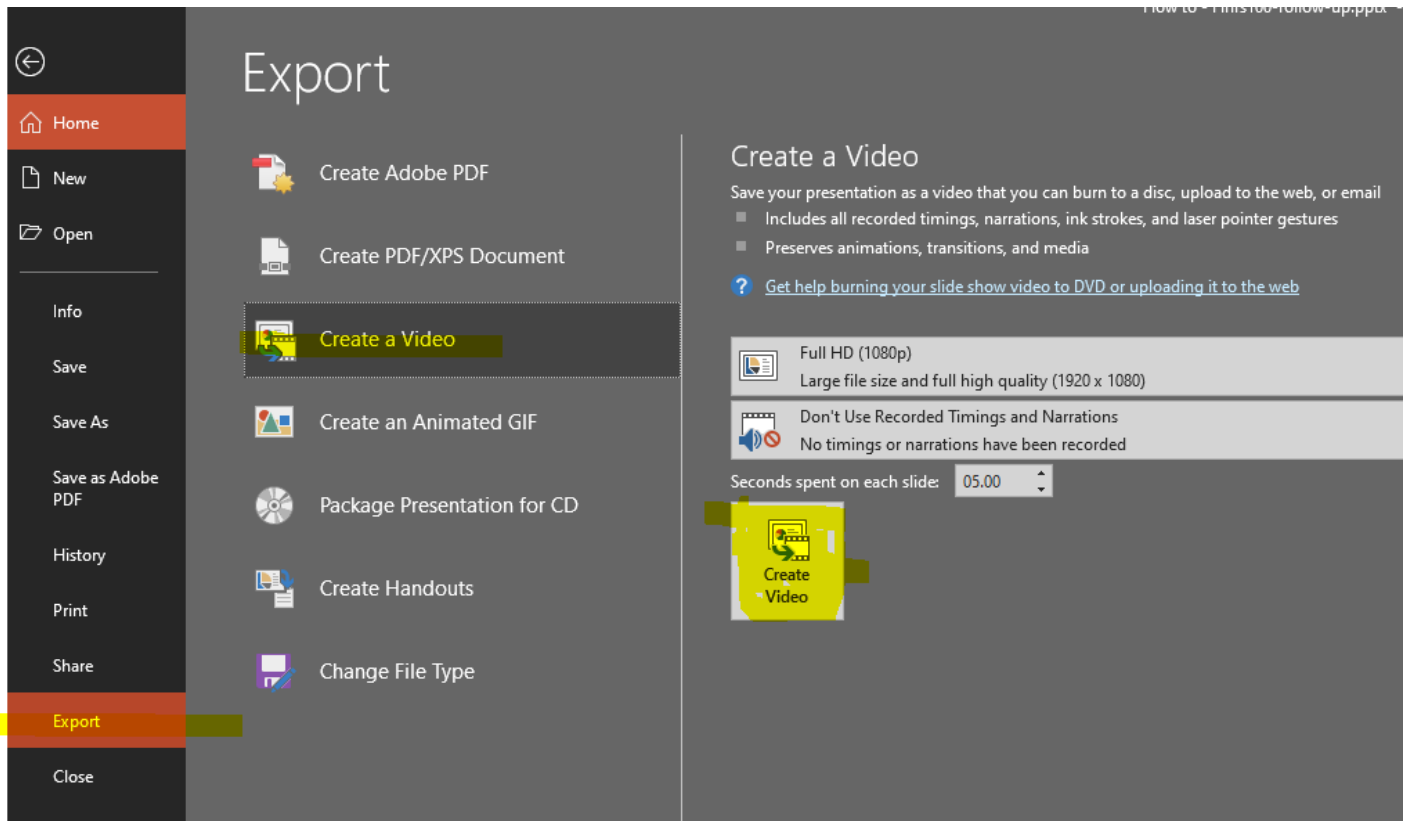
Unread



✓ Subscribe

↩ Reply

7. To **upload your narrated PowerPoint**, first export and save the presentation as a video (a knowledge base article and video to [narrate your PowerPoint](#) available as is a training video to [export and upload a video](#)).



8. Then, upload to your discussion page using the upload media button in the rich text editor, selecting the upload video tab, and selecting the video file you saved:

industrial sectors across the United States. Our model generates quality forecasts and allows us to predict how U.S. manufacturing may vary over the next few years.

Search entries or author   Unread         Subscribed

HTML Editor

**B**   *I*   U   **A**   **I**                   12pt

After the video uploads (this will take a several minutes, depending on file size). Hit 'Post Reply' and your video will insert and preview.

Record/Upload Media Comment

Record Media   **Upload Media**

Select Audio File    **Select Video File**

Cancel   Post Reply

9. If you have alternate media to upload, you can select **Choose File** and navigate to the location where your file is saved to select it. Next, select **Post Reply**.

The image shows a rich text editor interface. At the top, there is a toolbar with various icons for text formatting (bold, italic, underline, text color, background color, strikethrough), alignment (left, center, right, justified), list creation (bulleted, numbered), and other functions like link, unlink, image, linkify, and YouTube. Below the toolbar is a large, empty text area. At the bottom of the editor, there is a status bar. On the left side of the status bar, there is a yellow box containing a paperclip icon, a 'Choose File' button, and the text 'No file chosen'. On the right side of the status bar, there is a 'Cancel' button and a 'Post Reply' button, which is highlighted in yellow. The text '0 words' is visible in the top right corner of the status bar.

**Congratulations! Your oral presentation is posted and ready for others to view.**