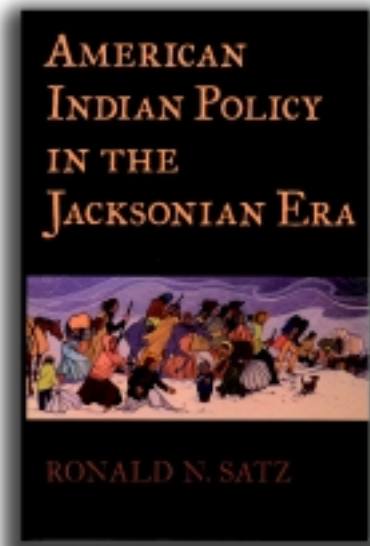
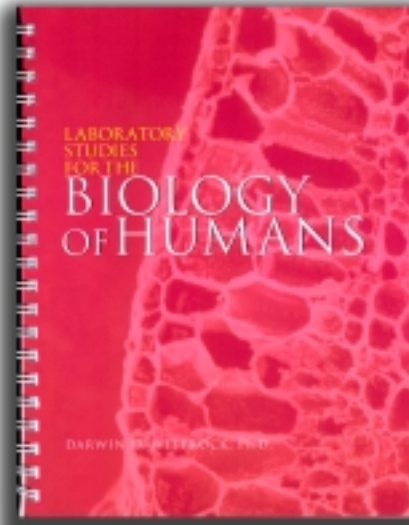
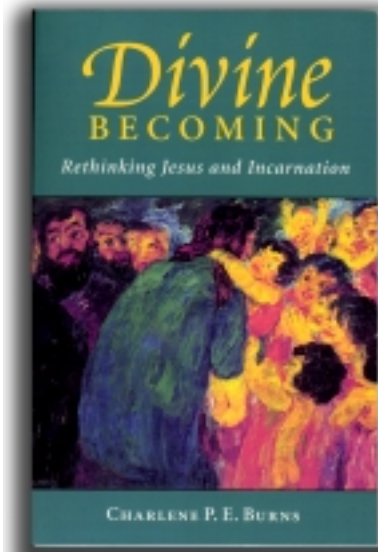


REPORT ON PUBLICATIONS AND OTHER SCHOLARLY ACHIEVEMENTS



2001-2002

University of Wisconsin-Eau Claire
Office of Research and Sponsored Programs

REPORT ON PUBLICATIONS AND OTHER SCHOLARLY ACHIEVEMENTS

2001-2002

Editorial Advisory Board

Christopher T. Lind

Assistant Vice Chancellor, Research and Sponsored Programs

Donald W. Zeuschel

Coordinator, Research & Sponsored Programs

Editor

April La Blanc

Graduate Assistant

For additional copies please call 715/836-3405

University *of* Wisconsin-Eau Claire

ON THE COVER

Clockwise from top: *Laboratory Studies for the Biology of Humans* by Darwin Wittrock (p. 20), *American Indian Policy in the Jacksonian Era* by Ronald Satz (p. 11), *The New Nursing Homes: A 20-Minute Way to Find Great Long-Term Care* by Mary Zwygart-Stauffacher (p. 52), and *Divine Becoming: Rethinking Jesus and Incarnation* by Charlene Burns (p. 52).

A University is a collection of diverse groups of individuals representing numerous areas of expertise. It is through such diversity and interaction of disciplines that UW-Eau Claire gains its strength. This *Report* illustrates such diversity and interactions in our institution.



University of Wisconsin-Eau Claire

105 Garfield Avenue • P.O. Box 4004 • Eau Claire, WI 54702-4004

The *2001-2002 Report on Publications and Other Scholarly Achievements* includes publications, creative achievements, extramural grants, faculty-student collaborations, undergraduate and graduate student independent and directed studies, and research papers. We celebrate the breadth and depth of the scholarship on our campus, and we also recognize the wonderful and unique opportunities our students have to engage in collaborative work with our outstanding faculty and academic staff and with each other. Many of these projects have been made possible with funding from the University of Wisconsin-Eau Claire Foundation, Inc.

The products of scholarly and creative activity form a tangible means through which the University contributes to society and demonstrates the fulfillment of its commitment to excellence in education. Projects represented in this report enhance what is taught and learned in the classroom and confirm for the UW-Eau Claire community, the community at large, and for prospective students the University's dedication to the academic and intellectual development of its faculty, academic staff, and students.

Updates on scholarly activity can also be found in the Office of Research and Sponsored Programs' publication *Cornerstone: Research News and Notes*, which is published once each spring and fall semester and the *University Bulletin*, published weekly by the University's News Bureau.

Donald Mash
Chancellor

TABLE OF CONTENTS

Preface	9	Geology	41
Explanations, Notes, and Comments	10	Health Services	42
Academic Affairs-Administrative	11	History	43
Academic and Career Services	11	Housing and Residence Life	44
Accounting and Finance	12	Human Development Center	44
Adult Health Nursing	12	Kinesiology and Athletics	44
Allied Health Professions	13	Library Services	45
Art	13	Management and Marketing	45
Biology	14	Mathematics	47
Center for International Education	20	Music and Theatre Arts	49
Chemistry	20	Nursing Systems	51
College of Business-Administrative	23	Philosophy and Religious Studies	52
College of Professional Studies-Administrative	23	Physics and Astronomy	53
Communication Disorders	23	Political Science	54
Communication and Journalism	24	Psychology	55
Computer Science	25	Public Safety	60
Continuing Education	26	School of Human Sciences and Services-Administrative	60
Counseling Services	27	School of Nursing-Administrative	61
Curriculum and Instruction	27	Social Work	61
Economics	27	Sociology and Anthropology-Sem I	61
English	28	Sociology-Sem II	61
Family Health Nursing	31	Special Education	62
Financial Aid	32	Student Services	62
Foreign Languages	32	Women's Studies	62
Foundations of Education	34	Index	63
Geography-Sem I			
Geography and Anthropology-Sem II	35		

P R E F A C E

Institutions of higher learning engage in research and creative activities as integral parts of their educational functions. It is through such activities that our knowledge is increased and achievements are made to further the well-being of the general public. The articles, books, published research reports, major recitals or other significant refereed creative achievements, research papers, extramural grants, and faculty/student collaborations produced by the faculty, academic staff, and students serve as indicators of the contributions that the University of Wisconsin-Eau Claire is making to the expansion of knowledge and the arts. UW-Eau Claire is pleased to acknowledge these achievements of its faculty, academic staff, and students.

The 2001-2002 Report on Publications and Other Scholarly Achievements represents, of course, only a small fraction of the total efforts of our faculty, academic staff, and students in research and creative activities. Some of our efforts do not lead to information that can be disseminated in an externally published form. However, the level of effort recorded in this *Report* is one measure of the achievements of UW-Eau Claire.

Of the activities catalogued in this *Report*, eight reasonably distinct categories can be identified:

1. publications which expand disciplinary frontiers of knowledge;
2. publications which transcend disciplinary boundaries by relationships with other disciplines;
3. publications which provide practical applications for research-generated knowledge;
4. publications which synthesize or reiterate research findings for newly identified audiences;
5. published creative works;
6. significant refereed activities which transmit a cultural/artistic heritage and/or expand or deepen the audience's horizons;
7. extramural grants which provide funding for research and sponsored programs;
8. faculty/student collaborations which enrich the scholarly experience for all involved and result in a tangible product such as a paper, a poster, a presentation, a non-print media form, a musical composition, or a new chemical compound.

A university is a collection of diverse groups of individuals representing numerous areas of expertise. It is through such diversity and interaction of disciplines that UW-Eau Claire gains its strength. This *Report* illustrates such diversity and interactions of our institution. Examples of the scholarly works cited in this *Report* can be found on display in a special case located on the west side of the entry corridor of McIntyre Library.

EXPLANATIONS, NOTES, AND COMMENTS

Distribution of the 2001-2002 Report on Publications and Other Scholarly Achievements. All faculty and academic staff receive a copy of the *Report*. A small stock of extra copies has been printed so that interested individuals may receive extra copies by calling 715/836-3405. Suggestions and comments for improving the *Report* should be sent to Assistant Vice Chancellor Christopher Lind.

Inclusions and Exclusions. Faculty and academic staff members with joint appointments have been listed under the single unit they selected as their primary appointment for purposes of this *Report*. The departmental affiliation of faculty, academic staff, and students is also noted. The index includes only those faculty and academic staff who were employees of UW-Eau Claire and students enrolled between May 2001 and April 2002. Students whose abstracts were accepted by the Office of Research and Sponsored Programs for inclusion in the Tenth Annual UW-Eau Claire Student Research Day on April 22-23, 2002 are also included in the *Report*. In addition to publications and creative achievements during the 2001-02 academic year, this *Report* includes items bearing publication dates from May 2000 to April 2001 that were inadvertently omitted from the last report or actually published in 2002 (with an earlier date on the cover due to a journal being backlogged). The next issue will cover the period of May 2002 to April 2003. Every attempt has been made to be complete and accurate within the ground rules established for the *Report*. Members of the Editorial Advisory Board screened all entries as to their appropriateness for inclusion.

Acknowledgments. The Editorial Board appreciates the hard work and cooperation of those who assisted with this publication. Faculty and staff members who carefully and promptly completed their submission materials and Betty Feia in the Office Research and Sponsored Programs who critically proof read the Report and further aided the work.

ACADEMIC AFFAIRS-ADMINISTRATIVE

Dr. Ronald Satz, Provost and Vice Chancellor
206A Schofield Hall
715/836-2320

Satz, Ronald. *American Indian Policy in the Jacksonian Era.* Norman University of Oklahoma Press, 2002.

Tallant, Steven, with **LaVonne Cornell-Swanson,** Social Work, **Jodi Thesing-Ritter,** Housing and Residence Life, **Sarah Harvieux,** Health Services, and **Sara Wilson,** undergraduate student, Social Work. "2002 Distribution of the Core Alcohol and Drug Survey." UW-Eau Claire Student Research Day—Poster Session 22-23 April 2002, Faculty/Student Research Collaborative Project.

Tetzloff, Jason. See Selika Ducksworth-Lawton, History.

ACADEMIC AND CAREER SERVICES

Ms. Ann Lapp, Director
240 Schofield Hall
715/836-5992

Dernbach, Amber, with **Mary Lee** and **Caitlin Lee,** undergraduate students, same department. "The Living Paj Ntaub Project: Hmong Journeys From Laos to Eau Claire." UW-Eau Claire Student Research Day—Poster Session 22-23 April 2002, Faculty/Student Research Collaborative Project.

Hanson, Betty. "Educational Opportunity Center." Extramural Grant. U.S. Department of Education. \$280,778.

—. "Student Support Services." Extramural Grant. U.S. Department of Education. \$47,452.

Hisrich, Joseph. "GEAR UP." Extramural Grant. U.S. Department of Education. \$292,800.

—. "Student Support Services." Extramural Grant. U.S. Department of Education. \$292,089.

Jacobsen, Bill. "Wetland Delineation Planning and Management Experiences." Extramural Grant. Wisconsin Department of Transportation. \$27,145.

Lee, Caitlin, undergraduate student. See Amber Dernbach, same department.

Lee, Mary, undergraduate student. See Amber Dernbach, same department.

Quinn, Patricia. "Ronald E. McNair Post-Baccalaureate Achievement Program." U.S. Department of Education. Extramural Grant. \$209,811.

See, Patti, with **Bruce Taylor,** English. "Coming of Age Film and Fiction in an Interactive First-Year Experience Class." Twenty-First Annual Conference on the Freshman Year Experience. Orlando, FL, 15-19 Feb. 2002. *Program for the Twenty-First Annual Conference on the First-Year Experience.* 57.

—, with **Bruce Taylor,** English. "Everybody's Wisconsin." Jazz and Poetry After Five. State Theater, Eau Claire, WI. 18 May 2001. Poetry/prose reading.

—, with **Bruce Taylor,** English. "John 3:16." Jazz and Poetry After Five. State Theater, Eau Claire, WI. 15 June 2001. Poetry/prose reading.

—. "Happiest I've Never Been." Fall Reading. Racy D'lenes Very Coffee Lounge, Eau Claire, WI. 16 Nov. 2001. Poetry/prose reading.

—. "How I Became a Third Wave Feminist." Girls Next Door: Poetry and Prose from Women of the Third Wave. The UW-Eau Claire Cabin, Eau Claire, WI. 11 March 2002. Poetry/prose reading.

—. "Notes on a Tuesday Date." *Conversely: The Smart Take on Relationships* 2.8 (2001): <<http://www.conversely.com/Stori/st021.shtml>>.

—. "Thighs Like Fresh Peaches." *Vestal Review: A Flash Fiction Magazine* 8 (Jan. 2002): <<http://www.vestalreview.net/thighs.HTM>>.

Vance, Jim. "American Multicultural Student Leadership Conference." Extramural Grant. Johnson Wax. \$51,176.

Vue, Charles. "Career Ladder." Extramural Grant. U.S. Department of Education. \$34,629.

—. "Refugee Teacher Training." Extramural Grant. U.S. Department of Education. \$21,260.

Wahome, Kimamo. "Upward Bound." Extramural Grant. U.S. Department of Education. \$295,376.

ACCOUNTING AND FINANCE

Dr. Michael Wilson, Department Chair
400 Schneider Social Science
715/836-2184

Falkenberg, Karen, undergraduate student. See Lucretia Mattson, same department.

Holmen, Jay, with **Joseph Louderback III**, Clemson University. *Managerial Accounting, 10th Ed.* Cincinnati, OH: South-Western, 2002.

—. “Teaching Accounting in a Web-Based Class Setting: Do Student Assessment Scores Differ?” *Proceedings of the North American Accounting Society Annual Meeting*. Chicago, IL, 28 Feb. 2002. Ed. Jack L. Armitage. Chicago: North American Accounting Society, 2002. 69-76.

Hyduke, Erin, undergraduate student. See Mehdi Sheikholeslami, same department.

Mattson, Lucretia, with **Abraham Nahm**, same department, **Karen Falkenberg**, **Chad Mc Cartney**, and **Julie Romary**, undergraduate students, same department. “Credit Card Use by UW-Eau Claire Students.” UW-Eau Claire Student Research Day—Poster Session 22-23 April 2002.

Mc Cartney, Chad, undergraduate student. See Lucretia Mattson, same department.

Nahm, Abraham. See Lucretia Mattson, same department.

Romary, Julie, undergraduate student. See Lucretia Mattson, same department.

Sheikholeslami, Mehdi, with **Erin Hyduke**, undergraduate student, same department. “The Impact of Intangible Assets on the Accuracy of Analysts’ Earnings Forecasts.” Faculty/Student Research Collaborative Project.

ADULT HEALTH NURSING

Dr. Sheila Smith, Department Chair
210 School of Nursing
715/836-4834

Freborg, Kaija, undergraduate student. See Sue Peck, same department.

Hydo, Sharon, graduate student. See Joan Stehle Werner, same department.

Imdieke, Brian, undergraduate student. See Rosemary Jadack, same department.

Jadack, Rosemary, with **Brian Imdieke**, undergraduate student, same department. “Social Networks and Risk Taking Behavior.” UW-Eau Claire Student Research Day—Poster Session 22-23 April 2002, Faculty/Student Research Collaborative Project.

Moon, Tricia, undergraduate student. See Joan Stehle Werner, same department.

Peck, Sue. “Asynchronous Distance Education (ADE) for Health Care in Underserved Populations.” Extramural Grant. U.S. Department of Education. \$62,565.

—, with **Kaija Freborg**, undergraduate student, same department “Camplife with Children.” Independent Study. Paper. Summer 2001.

—. “Nursing: Health Enhancement.” Spring 2000 and Fall 2001.

Tanyi, Ruth, graduate student. See Joan Stehle Werner, same department.

Werner, Joan Stehle, with **Sharon Hydo** and **Ruth Tanyi**, graduate students, and **Tricia Moon**, undergraduate student, same department. “Spirituality, Wellness, and Quality of Life in People With Chronic Mental Illness.” UW-Eau Claire Student Research Day—Poster Session 22-23 April 2002, Faculty/Student Research Collaborative Project.

ALLIED HEALTH PROFESSIONS

Dr. Dale Taylor, Department Chair
206 Human Sciences & Services
715/836-2628

Foley, Corinna, undergraduate student. See Douglas Olson, same department.

Huntoon, Eliza. See Douglas Olson, same department.

Lobe, Christina, undergraduate student. See Lee Anna Rasar, same department.

Meyer, Gregory. See Douglas Olson, same department.

Nelson, Robert. “Building Environmental Health Services Capacity in State and Local Departments.” Extramural Grant. Department of Health & Human Services. \$30,730.

Olson, Douglas. “Center for Health & Aging Services Excellence (CHASE).” Extramural Grant. University of Minnesota. \$10,000.

—, with **Corinna Foley**, undergraduate student, same department. “Qualitative Comparison of Long Term Care Facilities in Scotland and Wisconsin.” UW-Eau Claire Student Research Day—Poster Session 22-23 April 2002.

—, with **Leslie Grant** and **Sandra Potthoff**, University of Minnesota. “Staffing and Administrative Issues in Special Care Units.” *Alzheimer’s Care Quarterly* 2.3 (2001): 22-27.

—, with **Mary Zwygart-Stauffacher**, Nursing Systems, and **Gregory Meyer** and **Eliza Huntoon**, undergraduate students, same department. “What is the Director of Nursing?” Faculty/Student Research Collaborative Project.

—, with **Sandra Potthoff**, University of Minnesota. “Long-Term Health Care: Leadership Matters.” *Minnesota Physician* XV.3 (2001): 1, 12-13.

—. “Regional Geriatric Education Center.” Extramural Grant. Department of Health & Human Services. \$10,000.

—. “Regional Geriatric Education Center.” Extramural Grant. Larson Allen Weishair Co. \$750.

—. “What is the Director of Nursing?” Extramural Grant. Larson Allen Weishair & Co. LLP. \$750.

Rasar, Lee Anna, with **Amy Ray**, undergraduate student, same department. “Analysis of Healthy as Well as Destructive Responses to Anger Triggers Experienced by Inmates and Implications for Structuring Therapeutic Intervention via Music Therapy.” Faculty/Student Research Collaborative Project.

—, with **Amy Ray**, undergraduate student, same department. “Anger Management Database.” UW-Eau Claire Student Research Day—Poster Session 22-23 April 2002.

—, with **Christina Lobe**, **Rebecca Risberg**, and **Allison Reynolds**, undergraduate students, same department. “Assessment of Curriculum Through Assessment of Student Performance Status on Competencies Identified by American Music Therapy Association.” Faculty/Student Research Collaborative Project.

—, with **Christina Lobe**, **Rebecca Risberg**, and **Allison Reynolds**, undergraduate students, same department. “Integration of AMTA Professional Competencies into the Music Therapy Curriculum.” UW-Eau Claire Student Research Day—Poster Session 22-23 April 2002.

Ray, Amy, undergraduate student. See Lee Anna Rasar, same department.

Reynolds, Allison, undergraduate student. See Lee Anna Rasar, same department.

Risberg, Rebecca, undergraduate student. See Lee Anna Rasar, same department.

ART

Dr. Eugene Hood, Jr., Department Chair
104 Haas Fine Arts Center
715/836-3277

Christopherson, Michael, with **Sara Slattery**, undergraduate student, same department. “George Hagale: Sculptor/Collector.” UW-Eau Claire Student Research Day—Poster Session 22-23 April 2002, Faculty/Student Research Collaborative Project.

Hood, Gene. *Study Guide to Great Themes in Art.* Upper Saddle River, NJ: Prentice Hall, 2001.

Lassa, Jenn, undergraduate student. See Steve Terwilliger, same department.

LaVenture, Mary, undergraduate student. See Deirdre Monk, same department.

Monk, Deirdre, with **Mary LaVenture,** undergraduate student, same department. "Form." Faculty/Student Research Collaborative Project.

Slattery, Sara, undergraduate student. See Michael Christopherson, same department.

Terwilliger, Steve, with **Jenn Lassa,** undergraduate student, same department. "Creative Photography: New Context, New Scale." Summer Research Experiences for Undergraduates Grant.

BIOLOGY

Dr. Michael Weil, Department Chair
331 Phillips Science Hall
715/836-4166

Balding, Terry, with **Chris Wallace,** undergraduate student, same department. "Multiple Quantitative Unionidae Surveys with Specimen Removal Between Surveys: Chippewa River, Wisconsin." 34th Mississippi River Consortium, La Crosse, WI—Oral Presentation, Paper Presentation. 25-26 April 2002.

—. Tape-Recorded Broadcasts of Nestling Alarm and Adult Nest Defense Calls to Attract Merlins. *Passenger Pigeon* 63 (2001): 40-42.

Beuning, Kristina, with **Brent Wolfe, Thomas W. D. Edwards,** and **Richard J. Elgood,** University of Waterloo. "Carbon and Oxygen Isotope Analysis on Aquatic Sediment Cellulose: Methods and Applications." *Tracking Environmental Change Using Lake Sediments: Physical and Chemical Techniques, Volume 2.* Ed. Bill Last and John Smol. Dordrecht, Netherlands: Kluwer, 2001. 373-400.

—, with **Glenn Schmukler,** undergraduate student, same department. "Using Grass Epidermis to Reconstruct Paleograssland Community Composition." American Association of Geographers Annual Meeting, Los Angeles, CA, March 2002.

—, with **Glenn Schmukler,** undergraduate student, same department. "Utilizing Grass Cuticle Morphology to Refine Characterization of Paleograssland Communities." UW-Eau Claire Student Research Day—Poster Session 22-23 April 2002.

—, with **Jessica Scott,** undergraduate student, Wesleyan University. "Effects of Simulated Diagenesis and Charring on the Carbon Isotopic Composition of Grass (POACEAE) Cuticle." *Palaeogeography, Palaeoclimatology and Palaeoecology* 177 (2002): 169-181.

—, with **Jessica Scott,** undergraduate student, Wesleyan University, **Michael Talbot,** University of Bergen, Norway, and **Daniel Livingstone,** Duke University. "Terminal Pleistocene Grassland Communities Near Lake Bosomtwe, Ghana." PEP (Pole-Equator-Pole) III Transect Open Science Meeting, Aix-en-Provence, France, Aug. 2001.

—, with **Kerry Kelts** and **Jim Russell,** University of Minnesota, and **Brent Wolfe,** University of Waterloo. "Reassessment of Lake Victoria—Upper Nile River Paleohydrology from Oxygen Isotope Records of Lake-Sediment Cellulose." *Geology* 30.6 (2002): 559-562.

—, with **Mat Wooller,** Carnegie Institute, Washington, DC. "Introduction to the Reconstruction and Modeling of Grass-Dominated Ecosystems." *Palaeogeography, Palaeoclimatology and Palaeoecology* 177.1-2 (2002): 1-4.

—. "Paleodistributions of C3 & C4 Grasses in Tropical East Africa—Climate Implications." Extramural Grant. National Science Foundation. \$57,600.

—, with **William Anderson,** Florida Institute of Technology. "Calibration of Cellulose-Water Oxygen Isotopic Fractionation in Tropical Aquatic Plants." Annual Meeting of the American Geophysical Union, San Francisco, CA, Fall 2001. 82(47), Fall meeting suppl., *Eos, Transactions*. P22A-0520.

Bonis, Josh, undergraduate student. See Jon Scales, same department.

Boyce, C. L., undergraduate student. See Daniel Conklin, same department.

Bremer, Lindsay, undergraduate student. See Lloyd Turtinen, same department.

Broege, Aaron, undergraduate student. See Jon Scales, same department.

Buerkle, Alex, with **C. L. Peichel**, **K. S. Nereng**, **K. A. Ohgi**, **B. L. E. Cole**, and **P. F. Colosimo**, Stanford University, **D. Schluter**, University of British Columbia, and **D. M. Kingsley**, Stanford University. “The Genetic Architecture of Divergence Between Threespine Stickleback Species.” *Nature* 414 (2001): 901-905.

—, with **J. L. Grindstaff**, **J. M. Casto**, **V. Nolan, Jr.** and **E. D. Ketterson**, Indiana University. “Offspring Sex Ratio is Unrelated to Male Attractiveness in Dark-Eyed Juncos (*Junco hyemalis*).” *Behavioral Ecology and Sociobiology* 50 (2001): 312-316.

—, with **L. H. Rieseberg**, Indiana University. “Genetic Mapping in Hybrid Zones.” *American Naturalist* 159 (2002): S36-S50.

Carello, Christy, with **Alyson Hudock**, **Heidi Heizer**, and **Alexander Kluiber**, undergraduate students, same department. “The Energetics of Gradient Running in Quail.” Summer Research Experiences for Undergraduates Grant.

—, with **David Heitmann**, undergraduate student, same department. “The Effects of Arm Swing Motion on the Human Gait.” Summer Research Experiences for Undergraduates Grant.

—, with **Toni Poll-Sorensen**, Kinesiology and Athletics, **Alyson Hudock**, undergraduate student, same department. “The Alexander Technique: Efficiency in Human Movement.” UW-Eau Claire Student Research Day—Poster Session 22-23 April 2002, Faculty/Student Research Collaborative Project.

— . See Heidi Heizer, same department.

Chevalier, Steve, undergraduate student. See Amy Krist, same department.

Conklin, Daniel, with **C. L. Boyce**, undergraduate student, same department, **M. B. Trent** and **P. J. Boor**, University of Texas Medical Branch, Galveston, TX. “Amine Metabolism: A Novel Path to Coronary Artery Vasospasm.” *Toxicology and Applied Pharmacology* 175.2 (2001): 149-159.

—, with **Danica Kranig** and **Hanni Mueller**, undergraduate students, same department. “Human Vasospasm: A Murder Mystery in Two Acts. Act 2: Modus

Operandi - A Comparative Approach.” UW-Eau Claire Student Research Day—Poster Session 22-23 April 2002.

—, with **Hanni Mueller**, undergraduate student, same department. “Development of a Vasospasm Model: II. Acrolein Effects in Isolated Human Blood Vessels.” Faculty/Student Research Collaborative Project.

—, with **Hanni Mueller**, undergraduate student, same department. “Development of Vasospasm Model: III. Mechanism of Allylamine Toxicity in Isolated Human Blood Vessels.” Faculty/Student Research Collaborative Project.

—, with **Hanni Mueller** and **Danica Kranig**, undergraduate students, same department. “Development of Vasospasm Model: IV. Effects of Surgical Distension on the Reactivity of the Isolated Human Saphenous Vein.” Faculty/Student Research Collaborative Project.

—, with **Hanni Mueller** and **Danica Kranig**, undergraduate students, same department. “Human Vasospasm: A Murder Mystery in Two Acts. Act 1: The Crime Scene and Building a Case.” UW-Eau Claire Student Research Day—Poster Session 22-23 April 2002.

—, with **Melissa Garney**, undergraduate student, same department. “Mechanisms of Methylamine Relaxation in Isolated Human Blood Vessels.” Summer Research Experiences for Undergraduates Grant.

—, with **Melissa Garney**, undergraduate student, same department. “Role of cGMP in Methylamine-Induced Vascular Relaxation.” UW-Eau Claire Student Research Day—Poster Session 22-23 April 2002.

—, with **Melissa Garney**, **K. Hall**, and **Hanni Mueller**, undergraduate students, same department, **M. B. Trent** and **P. J. Boor**, University of Texas Medical Branch, Galveston, TX. “Role of Semicarbazide-sensitive Amine Oxidase in Methylamine Effects on Isolated Human Blood Vessels.” Experimental Biology Conference 2002, New Orleans, LA—Presentation. 20-24 April 2002. .

Culligan, Tara, undergraduate student. See Amy Krist, same department.

Dennis, Jeral, undergraduate student. See Daniel Janik, same department.

Garney, Melissa, undergraduate student. See Daniel Conklin, same department.

Hall, K, undergraduate student. See Daniel Conklin, same department.

Hawkins, Katherine, undergraduate student. See Evan Weiher, same department.

Heitmann, David, undergraduate student. See Christy Carello, same department.

Heizer, Heidi and **Alexander Kluibier**, undergraduate students, with **Christy Carello**, same department. "Running Downhill Does Not Always Result in Energy Savings." Sixteenth National Conference on Undergraduate Research. Whitewater, WI, 25-27 April 2002. *Abstract Book*. Whitewater, WI: University of Wisconsin, 2002. 248.

—, undergraduate student. See Christy Carello, same department.

Ho, Tim, with **Nicholas Wiegert**, undergraduate student, same department. "Conduction Velocity and Defibrillation Mechanisms." Summer Research Experiences for Undergraduates Grant.

—, with **Nicholas Wiegert**, undergraduate student, same department. "Increasing Dispersion in Conduction Velocity Increases Defibrillation Energy Requirements." UW-Eau Claire Student Research Day—Poster Session 22-23 April 2002.

Howe, Alicia, undergraduate student. See Evan Weiher, same department.

Hudock, Alyson, undergraduate student. See Christy Carello, same department.

Janik, Daniel, with **Jeral Dennis**, undergraduate student, same department. "Circadian Leptin." UW-Eau Claire Student Research Day—Poster Session 22-23 April 2002.

—. "Mechanisms of Activity Induced Circadian Clock Resetting." Extramural Grant. National Science Foundation. \$60,000.

Johnson, Timothy, undergraduate student. See Wilson Taylor, same department.

Kleintjes, Paula. "Determining Butterfly Responses to Management Practices in Bandelier National

Monument (BAND)." Extramural Grant. Southwest Parks & Monument Association. \$4,600.

—. "Determining Response of Butterflies to Vegetation Management on Bandelier National Monument." Final report for Grantee: Southwest National Parks and Monuments Association, March 2001.

—. "Inventory of the Butterflies of the Valles Caldera National Preserve (VSNP)." Extramural Grant. U.S. Geological Survey Bureau of Endangered Resources, Mid Continent Regional Office-Jemez Mountain Research Center. \$2,495.

—, with **Jill Sporrang**, undergraduate student, same department. "Habitat Enhancement for the Karner Blue Butterfly on CRP Lands in the Eau Claire River Basin." Faculty/Student Research Collaborative Project.

—, with **L. M. Pawluk**, undergraduate student, same department and **S. A. Fettig**, NPS Bandelier National Monument. "Response of Butterfly Assemblages to Ungulate Herbivory Along an Elevation Gradient." 86th Annual meeting of the Ecological Society of America, Madison, WI, 5-10 Aug. 2001. *Abstracts*. 303.

—, with **Matt Lloyd**, graduate student, same department. "Butterflies as Bioindicators of Habitat Quality on Conservation Reserve Parcels." *Ecological Restoration* 19.4 (2001): 266-267.

—, with **P. S. Cary**, New Mexico State Parks, **D. Hoard**, Friends of Bandelier, and **S. Fettig**, NPS-Bandelier National Monument. "Checklist of the Butterflies of Bandelier National Monument and the Valles Caldera National Preserve, NM." *Insects and Related Arthropods of North America*. Ed. P. A. Opler. Jamestown, ND Northern Prairie Wildlife Research Center Home Page (2001): <<http://www.npwrc.usgs.gov/resource/1999/insect/insect.htm>>.

—. "Response of Butterfly Assemblages in Bandelier National Monument." Extramural Grant. U.S. Geological Survey. \$2,500.

—, with **S. M. Fettig**, NPS Bandelier National Monument. "Butterflies, Aspen and Elk: What is the Connection?" *Proceedings of the 6th Annual Jemez Mountain Research Symposium*. Santa Fe, NM, 24 Jan. 2002. 23.

—, with **S. M. Fettig**, Bandelier National Monument. "Determine Butterfly Responses to Management

Practices.” 2001-2002 National Park Foundation Grant RMP#BAND-N-017.004. Extramural Grant. \$9,240.

—. “Butterflies of the Valles Caldera National Preserve.” Report to US Geological Survey Bureau of Endangered Resources. Los Alamos, NM, Oct. 2001. Final Report.

—. “Long Term Habitat and Restoration Management Plan for the Karner Blue Butterfly at the Wastewater Treatment Facility, Fairchild, WI.” Green Bay, WI, May 2001. Progress Report.

—. See Matt Lloyd, David Lonzarich, and Jill Sporrang, same department.

Kluber, Alexander, undergraduate student. See Christy Carello and Heidi Heizer, same department.

Kranig, Danica, undergraduate student. See Daniel Conklin, same department.

Krist, Amy. “Crayfish Induce a Defensive Shell Shape in a Freshwater Snail.” *Invertebrate Biology* 121.3 (2002): 235-242.

—, with **Curt M. Lively**, Indiana University, and **Jukka Jokela** and **Jurgen Wiehn**, University of Turku, Finland. “Host Condition Affects Prevalence of Parasitism.” 86th Annual meeting of the Ecological Society of America, Madison, WI, 5-10 Aug. 2001. *Abstracts*. 135.

—, with **Steve Chevalier** and **Zachary Najacht**, undergraduate students, same department. “Effects of Parasitism on Host Life-History Traits Among Populations of the Freshwater Snail, *Helisoma anceps*.” Faculty/Student Research Collaborative Project.

—, with **Tara Culligan**, undergraduate student, same department. “Comparison of Parasite Prevalence and Host Life-History Traits Among Populations of Fresh Water Snails.” Summer Research Experiences for Undergraduates Grant.

—, with **Tara Culligan** and **Abigail Vogler**, undergraduate students, same department. “Variation in Fecundity Among Populations of the Freshwater Snail *Helisoma anceps*.” UW-Eau Claire Student Research Day—Poster Session 22-23 April 2002.

Lamanna, Chris, undergraduate student. See Sasha Showsh, same department.

Larson, Kevin, undergraduate student. See David Lonzarich, same department.

Lehmann, Justin, undergraduate student. See Joseph Rohrer, same department.

Leinberger, Kelly, undergraduate student. See Joseph Rohrer, same department.

Linder, Heather, undergraduate student. See David Lonzarich, same department.

Lloyd, Matt, graduate student, with **Paula Kleintjes**. “Butterflies as a Measure of Success for Native Prairie Plantings on Conservation Reserve Program Parcels.” *Abstracts of the 86th Annual meeting of the Ecological Society of America*. Madison, WI, 5-10 Aug. 2001. 311.

—. See Paula Kleintjes, same department.

Lonzarich, David, with **Kevin Larson** and **Lee Oksiuta**, undergraduate students, same department. “Effect of Pool-Riffle Heterogeneity on the Movement of Brook Trout in Small Wisconsin Streams.” Summer Research Experiences for Undergraduates Grant.

—, with **Paula Kleintjes**, same department, **Heather Linder** and **Ingrid Ovans**, undergraduate students, same department. “Effects of Two Environmental Gradients on the Diversity of Intertidal Communities of San Salvador Island, Bahamas.” UW-Eau Claire Student Research Day—Poster Session 22-23 April 2002.

—. “Pine Lake Research.” Extramural Grant. Pine Lake Association. \$3,000.

—, with **Tim Ruhde**, undergraduate student, same department. “Manipulations of Stunted Largemouth Bass and Consequences on the Trophic Structure of Small Wisconsin Lakes.” Faculty/Student Research Collaborative Project.

Meisel, Jennifer, undergraduate student. See Evan Weiher, same department.

Mueller, Hanni, undergraduate student. See Daniel Conklin, same department.

Najacht, Zachary, undergraduate student. See Amy Krist, same department.

Norquist, Carolyn, undergraduate student. See Jon Scales, same department.

Oksiuta, Lee, undergraduate student. See David Lonzarich, same department.

Ovans, Ingrid, undergraduate student. See David Lonzarich, same department.

Pawluk, L. M., undergraduate student. See Paula Kleintjes, same department.

Peot, Sarah, graduate student. See Evan Weiher, same department.

Prall, David, undergraduate student. See Lloyd Turtinen, same department.

Preis, Hilary, undergraduate student. See Jon Scales, same department.

Rohrer, Joseph, with **Evan Weiher**, same department, **Kelly Leinberger** and **Justin Lehmann**, undergraduate students, same department. “Floristic Survey of the Joas Tract, Chippewa County, Wisconsin.” UW-Eau Claire Student Research Day—Poster Session 22-23 April 2002, Summer Research Experiences for Undergraduates Grant.

—. “Noteworthy Collection. Wisconsin. *Gypsophila muralis*.” *Michigan Botanist* 37 (1998): 113-114.

—. “The Sand Cherry in Wisconsin and Neighboring States.” *Michigan Botanist* 39 (2000): 59-69.

—. See Evan Weiher, same department.

Ruhde, Tim, undergraduate student. See David Lonzarich, same department.

Scales, Jon, with **Aaron Broege**, undergraduate student, same department. “Transcriptional Regulatory Regions of the EphB3 Gene Analyzed in Transgenic Frogs.” Faculty/Student Research Collaborative Project.

—, with **Aaron Broege** and **Carolyn Norquist**, undergraduate students, same department. “Construction of Homologous TCK Expression Constructs.” UW-Eau Claire Student Research Day—Poster Session 22-23 April 2002, Faculty/Student Research Collaborative Project.

—, with **Aaron Broege** and **Hilary Preis**, undergraduate students, same department. “Characterization of TCK Regulatory Sequences.”

Summer Research Experiences for Undergraduates Grant.

—, with **Hilary Pries**, undergraduate student, same department. “Sequencing and Mapping of TCK Regulatory Elements.” Faculty/Student Research Collaborative Project.

—, with **Josh Bonis**, undergraduate student, same department. “Is the C-Terminal Domain of Eph A4 Required to Mediated Disruption of Cadherin-Based Cell Adhesion?” UW-Eau Claire Student Research Day—Poster Session 22-23 April 2002, Faculty/Student Research Collaborative Project.

—, with **Robert S Winning**, Eastern Michigan University, **Emily K Ward**, Eastern Michigan University, graduate student, and **Glenn K Walker**, Eastern Michigan University. “EphA4 Catalytic Activity Causes Inhibition of RhoA GTPase in *Xenopus Laevis* Embryos.” *Differentiation* 70 (2002): 46-54, <<http://www.blackwell.de/dif.htm>>.

Schmukler, Glenn, undergraduate student. See Kristina Beuning, same department.

Sekorski, Amy, undergraduate student. See Sasha Showsh, same department.

Showsh, Sasha, with **Amy Sekorski**, undergraduate student, same department. “Structural and Genetic Analysis of a Bacteriocin Gene Located on Plasmid pAM369.” Faculty/Student Research Collaborative Project.

—, with **Chris Lamanna** and **Tom Tysver**, undergraduate students, same department. “Analysis of Plasmid pAM369: A Bacteriocin Encoding Plasmid Isolated From *Enterococcus faecalis* 368.” UW-Eau Claire Student Research Day—Poster Session 22-23 April 2002, Summer Research Experiences for Undergraduates Grant.

—, with **Erika DeBoever** and **Clewell Don**, University of Michigan. “Vancomycin-Resistant Plasmid in *Enterococcus faecalis* that Encodes Sensitivity to a Sex Pheromone also Produced by *Staphylococcus aureus*.” *Antimicrobial Agents and Chemotherapy* 45.7 (2001): 2177-2178. <www.journals.asm.org>.

Sporrong, Jill, undergraduate student, with **J. Anklam**, USDA NRCS-Altoona, **Paula Kleintjes**, same department. “Habitat Enhancement for the Federally Endangered Karner Blue Butterfly

(*Lycaeides melissa samuelis*) in the Eau Claire River Basin, Wisconsin." 86th Annual meeting of the Ecological Society of America, Madison, WI, 5-10 Aug. 2001. *Abstracts*. 347.

—, See Paula Kleintjes, same department.

Taylor, Wilson, with **Timothy Johnson**, undergraduate student, same department. "Wall Ultrastructure of Hornwort Spores." UW-Eau Claire Student Research Day—Poster Session 22-23 April 2002.

Trushenski, Nicole, undergraduate student. See Evan Weiher, same department.

Turtinen, Lloyd, with **Lindsay Bremer** and **David Prall**, undergraduate students, same department. "Function of the US29 Gene in Cytomegalovirus." UW-Eau Claire Student Research Day—Poster Session 22-23 April 2002.

—, with **Lindsay Bremer** and **David Prall**, undergraduate students, same department. "Prevalence of the US29 Gene in Human Cytomegalovirus Strains." Faculty/Student Research Collaborative Project.

—, See Scott Hartsel, Chemistry.

Tysver, Tom, undergraduate student. See Sasha Showsh, same department.

Vogler, Abigail, undergraduate student. See Amy Krist, same department.

Wallace, Chris, undergraduate student. See Terry Balding, same department.

Weiher, Evan, with **Alicia Howe**, undergraduate student, same department. "On the Combined Effects of Scale, Disturbance, and Stress on Species Richness in Oak Savannas." UW-Eau Claire Student Research Day—Poster Session 22-23 April 2002.

—, with **Jennifer Meisel** and **Nicole Trushenski**, undergraduate students, same department. "A Gradient Analysis of Oak Savanna Community Composition in Western Wisconsin." *Journal of the Torrey Botanical Society* 129 (2002): 115-124.

—, with **Jennifer Meisel** and **Nicole Trushenski**, undergraduate students, same department. "Multivariate Effects on Species Richness in Floodplain Oak Savannas." *Abstracts of the 86th*

Annual meeting of the Ecological Society of America. Madison, WI, 5-10 Aug. 2001. 317.

—, with **Joseph Rohrer**, same department, and **Alicia Howe**, undergraduate student, same department. "Prairie and Oak Savanna Floristics and Diversity in the Lower Chippewa River State Natural Area." UW-Eau Claire Student Research Day—Poster Session 22-23 April 2002, Summer Research Experiences for Undergraduates Grant.

—, with **Katherine Hawkins**, undergraduate student, same department. "Butterfly Diversity and Assembly Rules in Prairies and Oak Savannas." UW-Eau Claire Student Research Day—Poster Session 22-23 April 2002.

—, with **Katherine Hawkins**, undergraduate student, same department, **John McDonald** and **Andrew Meador**, Mississippi State University. "Patterns of Assembly Along a Toposequence in Pine Savannas and Baygall Gallery Forests." *Abstracts of the 86th Annual meeting of the Ecological Society of America*. Madison, WI, 5-10 Aug. 2001. 289-290.

—, with **Kristin Nielsen**, University of Ottawa, Canada, **Paul Keddy**, University of Ottawa & Southeastern Louisiana University, and **Rochelle Lawson**, CSIRO, Canberra, Australia. "A Comparative Study of Relative Competitive Performance and Plant Traits in 63 Terrestrial Herbaceous Plant Species." *Journal of Vegetation Science* 13 (2002): 5-16.

—, with **Nicole Trushenski** and **Jennifer Meisel**, undergraduate students, same department. "Multivariate Analysis of Floodplain Oak Savanna Community Composition." *Abstracts of the 86th Annual meeting of the Ecological Society of America*. Madison, WI, 5-10 Aug. 2001. 353.

—, with **Sarah Peot**, graduate student, same department, and **Karen Voss**, Wisconsin Department of Natural Resources. "Short-Term Effects of Experimental Restoration of a Lake Shore Plant Community." *Abstracts of the 86th Annual meeting of the Ecological Society of America*. Madison, WI, 5-10 Aug. 2001. 329.

—, with **T. Schauwecker**, Land Restoration Associates, San Diego, CA. "Disturbance-Associated Assembly and Response Rules in Blackland Prairies." *Abstracts of the 86th Annual meeting of the Ecological Society of America*. Madison, WI, 5-10 Aug. 2001. 358.

—. See Joseph Rohrer, same department.

Weil, Michael. “DNR Internships.” Extramural Grant. Wisconsin Department of Natural Resources. \$5,486.

Wiegert, Nicholas, undergraduate student. See Tim Ho, same department.

Wittrock, Darwin. *Laboratory Studies for the Biology of Humans*. Boston: Pearson Custom Publishing, 2002.

CENTER FOR INTERNATIONAL EDUCATION

Dr. Karl F. Markgraf, Director
111D Schofield Hall
715/836-4411

Markgraf, Karl. “Education for Reconciliation and Economic Opportunity.” Extramural Grant. Arthur B. Schultz Foundation. \$27,850.

Lochner-Wright, Cheryl. “Mutual Benefit: The Returned Student and the Study Abroad Office.” *Transitions Abroad* Mar./April 2002: 61-62.

CHEMISTRY

Dr. John Pladziewicz, Department Chair
460 Phillips Science Hall
715/836-3417

Bauer, Emily, undergraduate student. See Scott Hartsel, same department.

Burich, Stacy, undergraduate student. See Thao Yang, same department.

Cannon, Philip, undergraduate student. See Westley Manske, same department.

Carney, Michael, with **Danah Holman,** undergraduate student, same department. “Chromium (III) 2, 6-BIS (imino) Pyridine Complexes as Ethylene Polymerization.” UW-Eau Claire Student Research Day—Poster Session 22-23 April 2002.

—, with **Danah Holman** and **Sara Hayward,** undergraduate students, same department. “The Synthesis and Reactivity of Neutral Olefin Polymerization Catalysts.” Summer Research Experiences for Undergraduates Grant.

—, with **Nicholas Robertson,** undergraduate student, same department. “Neutral Group 6 Olefin Polymerization Catalysts.” Summer Research Experiences for Undergraduates Grant.

—, with **Nicholas Robertson,** undergraduate student, same department. “Synthesis and Reactivity of Chromium (II) and Chromium (III) Complexes Incorporating Bis (2-Pyridylmethyl) Amine and Tris (2-Pyridylmethyl) Ligands.” UW-Eau Claire Student Research Day—Poster Session 22-23 April 2002.

—. “Neutral Group 6 Olefin Polymerization Catalysts.” Extramural Grant. Research Corporation. \$32,000.

—. “Synthesis and Reactivity of Organochromium Complexes for Olefin Polymerization.” Extramural Grant. Petroleum Research Fund. \$35,000.

—. See Danah Holman and Nicholas Robertson, same department.

Drucker, Stephen, with **Emily Gilles,** undergraduate student, same department. “Dynamical Studies of Electronically Excited Molecules.” Summer Research Experiences for Undergraduates Grant.

—, with **Emily Gilles,** undergraduate student, same department. “Triplet-State Spectra of Small Organic Molecules.” UW-Eau Claire Student Research Day—Poster Session 22-23 April 2002.

Fenner, Clinton, undergraduate student, with **James Phillips,** same department. “Unraveling Substituent and Conformational Effects in the Overtone Spectra of Ethanol and its Singly Halogenated Analogs.” Sixteenth National Conference on Undergraduate Research. Whitewater, WI, 25-27 April 2002. *Abstract Book*. Whitewater, WI: University of Wisconsin, 2002. 282. Faculty/Student Research Collaborative Project.

—. See James Phillips, same department.

Fox, Derek, undergraduate student, with **Jason Halfen,** same department. “Ancillary Ligand Structure and Denticity Effects on the Copper-Catalyzed Olefin Aziridination Reaction.” Sixteenth National Conference on Undergraduate Research. Whitewater, WI, 25-27 April 2002. *Abstract Book*. Whitewater, WI: University of Wisconsin, 2002. 283.

—. See Jason Halfen, same department.

Gannon, Erin, undergraduate student. See Thao Yang, same department.

Gilles, Emily, undergraduate student. See Stephen Drucker, same department.

Goertz, Matthew, undergraduate student. See Mel Sahyun, same department.

Gullickson, Glen, undergraduate student. See David Lewis, same department.

Halfen, Jason. “Analysis of the Molecular Architecture of Copper Catalysts for Olefin Aziridination.” Extramural Grant. Camille and Henry Dreyfus Foundation. \$60,000.

—, with **Derek Fox**, undergraduate student, same department. “Metal-Mediated Carbon-Nitrogen Bond Formation Reactions.” Summer Research Experiences for Undergraduates Grant.

—, with **Derek Fox** and **Heather Moore**, undergraduate students, same department. “S-Alkylation of Square-Pyramidal Cationic Metallothiolates: Relevance to Biological Metal-Mediated Alkyl-Group Transfer Reactions.” UW-Eau Claire Student Research Day—Poster Session 22-23 April 2002.

—, with **Heather Moore**, undergraduate student, same department. “Synthetic Approaches to Modeling the Active Site of the Non-Heme Iron Enzyme Superoxide Reductase.” UW-Eau Claire Student Research Day—Poster Session 22-23 April 2002.

— See Derek Fox and Heather Moore, same department.

Hartsel, Scott, with **Emily Bauer**, undergraduate student, same department. “Cochleate Amphotericin B Drug Delivery Systems.” Summer Research Experiences for Undergraduates Grant.

—, with **Lloyd Turtnen**, Biology. “The Three Facets of Amphotericin B Activity.” Extramural Grant. National Science Foundation. \$235,000.

—, with **Theodore Weiland** and **Emily Bauer**, undergraduate students, same department. “Can Alzheimer’s and Mad Cow Disease be Treated With a Common Antibiotic? Evidence From the Lab.” UW-Eau Claire Student Research Day—Poster Session 22-23 April 2002.

Hayward, Sara, undergraduate student. See Michael Carney and Nicholas Robertson, same department.

Holman, Danah, undergraduate student, with **Michael Carney**, same department. “Chromium (III) 2, 6-BIS (imino) Pyridine Complexes as Ethylene Polymerization Catalysts.” Sixteenth National Conference on Undergraduate Research. Whitewater, WI, 25-27 April 2002. *Abstract Book*. Whitewater, WI: University of Wisconsin, 2002. 288.

— See Michael Carney, same department.

King, Fred. “High Precision Calculations on Few-Electron Systems.” Extramural Grant. Petroleum Research Fund. \$50,000.

— “High Precision Calculations on the Beryllium and Lithium Atoms.” Extramural Grant. National Science Foundation. \$20,000.

—, with **Lars Nelson**, undergraduate student, same department. “Some Problems in Atomic Structure Calculations.” Summer Research Experiences for Undergraduates Grant.

Lewis, David, with **Glen Gullickson**, undergraduate student, same department. “Benzhydrylation of Active Methylene Compounds.” UW-Eau Claire Student Research Day—Poster Session 22-23 April 2002.

—, with **Joel Lischefski**, undergraduate student, same department. “Multistep Synthesis Experiment for the Organic Library.” UW-Eau Claire Student Research Day—Poster Session 22-23 April 2002.

Lischefski, Joel, undergraduate student. See David Lewis, same department.

Manske, Westley and **Philip Cannon**, undergraduate students, with **Marc Mc Ellistrem**, same department. “Structure of GaN Surfaces - The Persistence of Surface Clusters.” UW-Eau Claire Student Research Day—Poster Session 22-23 April 2002, Sixteenth National Conference on Undergraduate Research. Whitewater, WI, 25-27 April 2002. *Abstract Book*. Whitewater, WI: University of Wisconsin, 2002. 293.

— See Marc Mc Ellistrem, same department.

Mc Ellistrem, Marc, with **Westley Manske**, undergraduate student, same department. “Hydrogen Absorption on Silicon Enhanced Ethylene.” Faculty/Student Research Collaborative Project.

—, with **Westley Manske** and **Timothy Schleusner**, undergraduate students, same department. “Gallium Nitride Surface Structure Studied by Scanning Tunneling Microscopy.” Faculty/Student Research Collaborative Project.

—, with **Westley Manske**, undergraduate student, same department. “Towards Single-Molecule Conduction: A Scanning Tunneling Microscopy Study.” Summer Research Experiences for Undergraduates Grant.

—, See Westley Manske, same department and Douglas Dunham, Physics and Astronomy.

Miller-Rodeberg, Marcia, with **Rebecca Siemer** and **Amber Zopp**, undergraduate students, same department. “Microbial Mechanisms for the Degradation of Aromatic Compounds.” Summer Research Experiences for Undergraduates Grant.

—, with **Rebecca Siemer** and **Amber Zopp**, undergraduate students, same department. “The Catalase/Peroxidase Enzyme from *Brevibacterium fuscum*.” UW-Eau Claire Student Research Day—Poster Session 22-23 April 2002.

Moore, Heather, undergraduate student, with **Jason Halfen**, same department. “Synthetic Approaches to Modeling the Active Site of the Non-Heme Iron Enzyme Superoxide Reductase.” Sixteenth National Conference on Undergraduate Research. Whitewater, WI, 25-27 April 2002. *Abstract Book*. Whitewater, WI: University of Wisconsin, 2002. 295.

—, See Jason Halfen, same department.

Muller, Cheryl, with **Donald Rogness**, undergraduate student, same department. “Sulfoxides in Selective Alcohol Oxidations.” Faculty/Student Research Collaborative Project.

Nelson, Lars, undergraduate student. See Fred King, same department.

Phillips, James, with **Clinton Fenner**, undergraduate student, same department. “Probing Substituent and Solvent Effects on Charge Distribution in O-H Containing Molecules with Vibrational Intensity Measurements.” Summer Research Experiences for Undergraduates Grant.

—, with **Nathan Wells**, undergraduate student, same department. “A Comparative Study of the Matrix Isolation Infrared Spectra of Nitrile Donor - Boron

Trifluoride Complexes.” UW-Eau Claire Student Research Day—Poster Session 22-23 April 2002.

—, with **Nathan Wells**, undergraduate student, same department. “Infrared Spectroscopy at 10K: Partially-Bonded Complexes Formed from Nitriles and Boron Trifluoride.” Faculty/Student Research Collaborative Project.

—, “Spectroscopic Investigation of Molecular Complexes in Cryogenic Matrices.” Extramural Grant. Petroleum Research Fund. \$50,000.

—, See Clinton Fenner and Nathan Wells, same department.

Robertson, Nicholas and **Sara Hayward**, undergraduate students, with **Michael Carney**, same department. “Synthesis and Reactivity of Chromium (II) and Chromium (III) Complexes Incorporating Bis (2-Pyridylmethyl) Amine and Tris (2-Pyridylmethyl) Ligands.” Sixteenth National Conference on Undergraduate Research. Whitewater, WI, 25-27 April 2002. *Abstract Book*. Whitewater, WI: University of Wisconsin, 2002. 299.

—, See Michael Carney, same department.

Rogness, Donald, undergraduate student. See Cheryl Muller, same department.

Sahyun, Mel, with **Matthew Goertz**, undergraduate student, same department. “Is the Bunsen-Roscoe Law of Photochemistry Absolute in its Applicability?” Faculty/Student Research Collaborative Project.

Schleusner, Timothy, undergraduate student. See Marc Mc Ellistrem, same department.

Schulta, Danielle, undergraduate student. See Thao Yang, same department.

Siemer, Rebecca, undergraduate student. See Marcia Miller-Rodeberg, same department.

Weiland, Theodore, undergraduate student. See Scott Hartsel, same department.

Wells, Nathan, undergraduate student, with **James Phillips**, same department. “A Comparative Study of the Matrix Isolation Infrared Spectra of Nitrile Donor - Boron Trifluoride Complexes.” Sixteenth National Conference on Undergraduate Research. Whitewater,

WI, 25-27 April 2002. *Abstract Book*. Whitewater, WI: University of Wisconsin, 2002. 308.

—. See James Phillips, same department.

Yang, Thao, with **Danielle Schulta**, undergraduate student, same department. “NMR Studies of RGD Peptide Structure.” UW-Eau Claire Student Research Day—Poster Session 22-23 April 2002.

—, with **Danielle Schulta**, **Stacy Burich**, and **Erin Gannon**, undergraduate students, same department. “NMR Studies of Short RGD Peptide Structures in SDS Micelles.” UW-Eau Claire Student Research Day—Poster Session 22-23 April 2002.

Zopp, Amber, undergraduate student. See Marcia Miller-Rodeberg, same department.

COLLEGE OF BUSINESS-ADMINISTRATIVE

Dr. V. Thomas Dock, Dean
119A Schneider Social Science
715/836-5509

Bergmann, Marilyn. See Kathryn Ready, Management and Marketing.

COLLEGE OF PROFESSIONAL STUDIES-ADMINISTRATIVE

Dr. Mark Clark, Dean
160 Human Sciences & Services
715/836-2722

Clark, Mark. “St. Joseph’s Hospital Education Program.” Extramural Grant. St. Joseph’s Foundation. \$131,742.

COMMUNICATION DISORDERS

Dr. Larry Solberg, Department Chair
123 Human Sciences & Services
715/836-4186

Barnaby, Meghan, undergraduate student. See Linda Carpenter, same department.

Bischel, Christie, undergraduate student. See Larry Solberg, same department.

Bohlken, Megan, graduate student. See Larry Solberg, same department.

Brown, Rebecca, graduate student. See Larry Solberg, same department.

Carpenter, Linda, with **Amy Feit**, undergraduate student, same department. “Cochlear Implants: A Case Study.” UW-Eau Claire Student Research Day—Poster Session 22-23 April 2002.

—, with **Meghan Barnaby**, **Jenna Poulos**, and **Jennifer Funk**, undergraduate students, same department. “Functional Assessment of Adult Non-Native English Speakers.” Faculty/Student Research Collaborative Project.

—, with **Michelle Finup**, **Nicole Litka** and **Haley Harper**, undergraduate students, same department. “Non-Native English Speakers’ Effectiveness in Clinical Service: Consumer Rating.” UW-Eau Claire Student Research Day—Poster Session 22-23 April 2002, Faculty/Student Research Collaborative Project.

—. See Kathryn Anderson, Family Health Nursing.

Charest, Renee, undergraduate student. See Larry Solberg, same department.

Feit, Amy, undergraduate student. See Linda Carpenter, same department.

Finup, Michelle, undergraduate student. See Linda Carpenter, same department.

Funk, Jennifer, undergraduate student. See Linda Carpenter, same department.

Graf, Natalie, undergraduate student. See Kristine Retherford, same department.

Haley, Grace, undergraduate student. See Larry Solberg, same department.

Harper, Haley, undergraduate student. See Linda Carpenter, same department.

Jones, Taryn, undergraduate student. See Kristine Retherford, same department.

Litka, Nicole, undergraduate student. See Linda Carpenter, same department.

Nyhus, Karyn, graduate student. See Larry Solberg, same department.

Owen, Jennie, undergraduate student. See Kristine Retherford, same department.

Poulos, Jenna, undergraduate student. See Linda Carpenter, same department.

Radmer, Katherine, graduate student. See Larry Solberg, same department.

Retherford, Kristine, with **Natalie Graf, Taryn Jones**, and **Jennie Owen**, undergraduate students, same department. "Normal Infant Swallow: Frequency Data Collection." Faculty/Student Research Collaborative Project.

Schmitz, Jonathan, graduate student. See Larry Solberg, same department.

Solberg, Larry, with **Grace Haley, Christie Bischel**, and **Renee Charest**, undergraduate students, same department. "Voice Characteristics of Hmong and Caucasian Children." UW-Eau Claire Student Research Day—Poster Session 22-23 April 2002.

—, with **Katherine Radmer, Jonathan Schmitz, Karyn Nyhus, Rebecca Brown**, and **Megan Bohlken**, graduate students, same department. "Long-Term Average Spectrum as a Predictor of Dysphonia." UW-Eau Claire Student Research Day—Poster Session 22-23 April 2002.

—, with **Sally Wurpts**, graduate student, same department. "The Effects of Electrical Stimulation and Thermal Stimulation on Unilateral Facial Weakness." Faculty/Student Research Collaborative Project.

Wurpts, Sally, graduate student. See Larry Solberg, same department.

COMMUNICATION AND JOURNALISM

Dr. A. David Gordon, Department Chair
162 Hibbard Humanities Hall
715/836-2528

Chang, Xiong Pao, undergraduate student. See W. Robert Sampson, same department.

Clepper, Angela, undergraduate student. See W. Robert Sampson, same department.

Dorsher, Michael, with **Leah Thorsen**, undergraduate student, same department. "Spectator Ethics and Editorial Policies Manual." Directed Study. Manual of Policies for Guiding Spectator Staff. Spring 2002.

Fischer, Joanna, undergraduate student. See W. Robert Sampson, same department.

Geurkink, Alicia, undergraduate student. See W. Robert Sampson, same department.

Hafele, Brent, undergraduate student. See W. Robert Sampson, same department.

Hafen, Susan, with **Maiknue Moua**, undergraduate student, same department. "Hmong Women Leaders: Identities, Roles, and Stigmas." UW-Eau Claire Student Research Day—Poster Session 22-23 April 2002.

—, See David Kraai, Aaron Unseth and Joe Waterhouse, same department.

Hildebrandt, Rebecca, undergraduate student. See W. Robert Sampson, same department.

Holm, Jessica, undergraduate student, with **Judy Sims**, same department. "A Survey of U.S. Pre-Departure Cross-Cultural Training Programs for Germany." Directed Study. Research Paper, UW-Eau Claire Student Research Day—Poster Session 22-23 April 2002, Sixteenth National Conference on Undergraduate Research. Whitewater, WI, 25-27 April 2002. *Abstract Book*. Whitewater, WI: University of Wisconsin, 2002. 24.

—, See W. Robert Sampson, same department.

Janiszewski, Dawn, undergraduate student. See W. Robert Sampson, same department.

Johnson, Heidi, undergraduate student. See W. Robert Sampson, same department.

Kluge, Shana, undergraduate student. See W. Robert Sampson, same department.

Kraai, David, undergraduate student, with **Susan Hafen**, same department. "A Cluster Analysis of the 'Gods Speak' Billboard Campaign." Sixteenth National Conference on Undergraduate Research. Whitewater, WI, 25-27 April 2002. *Abstract Book*. Whitewater, WI: University of Wisconsin, 2002. 24.

Kryzer, Jaycelyn, undergraduate student. See W. Robert Sampson, same department.

Lawrence, Robert, undergraduate student. See W. Robert Sampson, same department.

Moe, Eulalie, undergraduate student. See W. Robert Sampson, same department.

Moua, Maiknue, undergraduate student. See Susan Hafen and W. Robert Sampson, same department.

Perkins, Daniel, with **William Starosta**, Howard University. “Representing Coculturals: On Form and News Portrayals of Native Americans.” *The Howard Journal of Communications* 12.2 (2001): 73-84. <<http://www.tandf.co.uk/journals/tf/10646175.html>>.

Peterson, Heather, undergraduate student. See W. Robert Sampson, same department.

Peterson, Julie. See Gloria Hochstein, English.

Przybylski, Sarah, undergraduate student. See W. Robert Sampson, same department.

Rowe, Andrea, undergraduate student. See W. Robert Sampson, same department.

Sampson, W. Robert, with **Angela Clepper, Eulalie Moe, Heather Peterson, Sarah Przybylski**, and **Andrea Rowe**, undergraduate students, same department. “Analysis of Communication in the Eau Claire Sheriff’s Department.” UW-Eau Claire Student Research Day—Poster Session 22-23 April 2002.

—, with **Alicia Geurkink, Rebecca Hildebrandt, Dawn Janiszewski**, and **Robert Lawrence**, undergraduate students, same department. “Communication Satisfaction.” UW-Eau Claire Student Research Day—Poster Session 22-23 April 2002.

—, with **Brent Hafele, Joanna Fischer, Heidi Johnson**, and **Xiong Pao Chang**, undergraduate students, same department. “Communication Analysis of a Hotel and Conference Center Franchise.” UW-Eau Claire Student Research Day—Poster Session 22-23 April 2002.

—, with **Jaycelyn Kryzer, Jessica Holm, Shana Kluge**, and **Maiknue Moua**, undergraduate students, same department. “An Organizational Analysis of a Non-Profit Organization.” UW-Eau Claire Student Research Day—Poster Session 22-23 April 2002.

Sims, Judy. See Jessica Holm, same department.

Thorsen, Leah, undergraduate student. See Michael Dorsher, same department.

Unseth, Aaron, undergraduate student, with **Susan Hafen**, same department. “Ananova: The Virtual Newscaster: A Neoaristotelian Analysis.” Sixteenth National Conference on Undergraduate Research. Whitewater, WI, 25-27 April 2002. *Abstract Book*. Whitewater, WI: University of Wisconsin, 2002. 25.

Waterhouse, Joe, undergraduate student, with **Susan Hafen**, same department. “The Princess Diana Fairy Tale: A Dramatistic Analysis of Its Ending.” Sixteenth National Conference on Undergraduate Research. Whitewater, WI, 25-27 April 2002. *Abstract Book*. Whitewater, WI: University of Wisconsin, 2002. 26.

COMPUTER SCIENCE

Dr. Andrew Phillips, Department Chair
131 Phillips Science Hall
715/836-2526

Covi, Ben, undergraduate student. See Andrew Phillips, same department.

LeMay, Michael, undergraduate student. See Michael Wick, same department.

Meehean, Joe, undergraduate student. See Daniel Stevenson, same department.

Meyer, Matt, undergraduate student. See Michael Wick, same department.

Moore, Thomas. “Bringing the Enterprise into a Database Systems Course.” *ACM SIGCSE Technical Symposium on Computer Science Education*. Cincinnati, OH, 27 Feb. 2002. Ed. ACM. New York: ACM Press, 2002. 262-265.

Phillips, Andrew, with **Ben Covi**, undergraduate student, same department. “A Minimum Canonical Class Definition for C++ Classes.” Faculty/Student Research Collaborative Project.

—, with **Ben Covi**, undergraduate student, same department. “Conversion to OCCF Compliant C++.” UW-Eau Claire Student Research Day—Poster Session 22-23 April 2002.

—, with **Daniel Williams**, undergraduate student, same department. “Strategies for Random Conformation Generation in Protein Structure Prediction.” UW-Eau Claire Student Research Day—Poster Session 22-23 April 2002, Faculty/Student Research Collaborative Project.

—. “ITR: Global Optimization in Computational Biology.” Extramural Grant. National Science Foundation. \$17,728.

—, with **J. Ben Rosen**, University of California, San Diego, and **Ken A. Dill**, University of California, San Francisco. “Convex Global Underestimation for Molecular Structure Prediction.” *From Local to Global Optimization*. Ed. A. Migdalas, P. Pardalos, and P. Varbrand. Dordrecht: Kluwer Academic Publishers, 2001. 1-18.

—. “Molecular Structure Determination: Convex Global Underestimation.” *Encyclopedia of Optimization*. Ed. C. Floudas and P. Pardalos. Dordrecht: Kluwer Academic Publishers, 2001. Vol III: 421-425.

—, with **Peter Turner**, U.S. Naval Academy, **Steve Cunningham**, California State University, Stanislaus, **Angela Shiflet**, Wofford College, **Kris Stewart**, San Diego State University, and **Ignatios Vakalis**, Capital University. “Panel on Engineering Programs and Courses.” *ACM SIGCSE Technical Symposium on Computer Science Education*. Cincinnati, OH, 27 Feb. 2002. Ed. ACM. New York: ACM Press, 2002. 96-97.

—. “Quadratic Fractional Programming: Dinkelbach’s Method.” *Encyclopedia of Optimization*. Ed. C. Floudas and P. Pardalos. Dordrecht: Kluwer Academic Publishers, 2001. Vol IV: 437-440.

—. See Michael Wick, same department.

Steffen, Theresa, undergraduate student. See Daniel Stevenson, same department.

Stevenson, Daniel, with **Joe Meehan**, undergraduate student, same department. “Redesign of the Hierarchical Concurrent State Machine.” UW-Eau Claire Student Research Day—Poster Session 22-23 April 2002, Faculty/Student Research Collaborative Project.

—, with **Theresa Steffen**, undergraduate student, same department. “The PNG Image Format and its Impact on Web Pages.” UW-Eau Claire Student Research Day—

Poster Session 22-23 April 2002, Faculty/Student Research Collaborative Project.

—. See Michael Wick, same department.

Wick, Michael, with **Daniel Stevenson** and **Andrew Phillips**, same department. “Using an Environment Chain Model to Teach Inheritance in C++.” *ACM SIGCSE Technical Symposium on Computer Science Education*. Cincinnati, OH, 27 Feb. 2002. Ed. ACM. New York: ACM Press, 2002. 297-301.

—, with **Matt Meyer** and **Michael LeMay** undergraduate students, same department. “DNA Computing Simulation.” UW-Eau Claire Student Research Day—Poster Session 22-23 April 2002, Faculty/Student Research Collaborative Project.

Williams, Daniel, undergraduate student. See Andrew Phillips, same department.

CONTINUING EDUCATION

Dr. Robert Whitcomb, Director
116 Water Street Continuing Education
715/836-3636

Jones, Kevin. “Small Business Administration.” Extramural Grant. Small Business Administration. \$119,108.

King, Debra. “Conference on Adult Literacy.” Extramural Grant. U.S. Department of Education. \$5,000.

—. See Patricia Christopherson, School of Human Sciences and Services-Administrative.

Stevens, Douglas. “Wisconsin Regional Teen Institute.” Extramural Grant. Department of Health & Human Services. \$10,000.

—. “Wisconsin Regional Teen Institute.” Extramural Grant. U.S. Department of Education. \$200,000.

Whitcomb, Robert. “CESA 10 Contract Instruction.” Extramural Grant. CESA 10. \$36,512.

—. “Cray Academy.” Extramural Grant. Cray Academy Inc. \$5,000.

—. “Homework Helpline.” Extramural Grant. CESA 10. \$17,863.

COUNSELING SERVICES

Dr. Patrick J. Kennedy, Director
2122 Old Library
715/836-5521

Boyum, Richard. “Healthy Weight Control: A Cognitive Behavioral Approach” 2001, “Holiday Depression,” “Keeping it Simple, Smoking Cessation by College Students,” “Long Distance Relationships,” “Making Resolutions for Behavioral Change,” “Sexuality in College Students,” “Sweet Dreams: Sleep Etiquette for College Students,” and “Tricksters Versus Wizards and Fairy Godmothers.” *University of Chicago Student Virtual Pamphlet Collection*. 2002. <<http://counseling.uchicago.edu/vpc/>>.

—. “The Road is Open.” *Eau Claire Leader Telegram* 7 Sept. 2001: 6A.

—. “Tips for Success in College.” *Dunn County News* 5 Sept. 2001: B3-4.

Kennedy, Josh, undergraduate student. See P. J. Kennedy, same department.

Kennedy, P. J., with **Allen Keniston**, Psychology, **Becky Moe**, **Kait Wainscott**, **Josh Kennedy**, **Ken Ortery** and **Megan Sepnafski**, undergraduate students, same department. “The Incidence Rate and Correlates of Tobacco Use on the UW-Eau Claire Campus.” UW-Eau Claire Student Research Day—Poster Session 22-23 April 2002, Faculty/Student Research Collaborative Project.

—. See Lori Bica, Psychology.

Moe, Becky, undergraduate student. See P. J. Kennedy, same department.

Ortery, Ken, undergraduate student. See P. J. Kennedy, same department.

Schneider, Katherine S. See Marie (Mickey) Crothers, Psychology.

Sepnafski, Megan, undergraduate student. See P. J. Kennedy, same department.

Wainscott, Kait, undergraduate student. See P. J. Kennedy, same department.

CURRICULUM AND INSTRUCTION

Dr. Susan Mc Intyre, Department Chair
284 Brewer Hall
715/836-5846

Barganz, R. See Kathryn Anderson, Family Health Nursing.

Dunlap, William P. See Katherine A. Rhoades, Foundations of Education.

Hollon, Robert. See Katherine A. Rhoades, Foundations of Education.

Mc Intyre, Sue. See Katherine A. Rhoades, Foundations of Education.

Yefimov, Oleg, undergraduate student. See Kate Mastruserio Reynolds, Foreign Languages.

ECONOMICS

Dr. Edward Young, Department Chair
400 Schneider Social Science
715/836-5743

Avin, Rose-Marie, with **Cristiana Oliveira**, undergraduate student, same department. “Modernization and Women in Brazil: The Role of Race, Class, and Ethnicity.” UW-Eau Claire Student Research Day—Poster Session 22-23 April 2002, Faculty/Student Research Collaborative Project.

Carroll, Wayne, with **Tua Lor** and **Caitlin Lee**, undergraduate students, same department. “Hmong Population Research Project.” UW-Eau Claire Student Research Day—Poster Session 22-23 April 2002, Faculty/Student Research Collaborative Project.

—. See Maria DaCosta, same department.

DaCosta, Maria, with **Feng Deng**, undergraduate student, same department. “China and the ‘New Economy’.” UW-Eau Claire Student Research Day—Poster Session 22-23 April 2002, Faculty/Student Research Collaborative Project.

—, with **Rama Yelkur**, Management and Marketing. “Differential Pricing and Segmentation on the Internet: The Case of Hotels.” *Management Decision* 39.4 (2001): 252-261.

—. “Regional Economic Integration in Pacific Asia: Market Forces, Trends and Prospects.” *GeoINova* 3 (2001): 73-112.

—, with **Wayne Carroll**, same department. “Township and Village Enterprises, Openness, and Regional Economic Growth in China.” *Post-Communist Economies* 13.2 (2001): 229-241.

—. See Rama Yelkur, Management and Marketing.

Deng, Feng, undergraduate student. See Maria DaCosta, same department.

Fuller, David, undergraduate student. See David Schaffer, same department.

Hutchinson, Rebecca, undergraduate student. See Fred Kolb, same department.

Kolb, Fred, with **Rebecca Hutchinson**, undergraduate student, same department. “Predicting Opening Weekend Box Office Revenue.” UW-Eau Claire Student Research Day—Poster Session 22-23 April 2002.

Lee, Caitlin, undergraduate student. See Wayne Carroll, same department.

Lor, Tua, undergraduate student. See Wayne Carroll, same department.

Oliveira, Cristiana, undergraduate student. See Rose-Marie Avin, same department.

Schaffer, David, with **David Fuller**, undergraduate student, same department. “Growing Wage Inequality in the U.S. - How Did We Get Here and Where Are We Going?” Summer Research Experiences for Undergraduates Grant.

—, with **David Fuller**, undergraduate student, same department. “Measuring Gender Segregation by Occupation: Theory and Applications.” UW-Eau Claire Student Research Day—Poster Session 22-23 April 2002.

Yakubov, Ravshan, undergraduate student, with **Edward Young**, same department. “Uzbekistan: Past and Future Perspectives, The America’s New War and Its Influence on the Economy of Uzbekistan.” UW-Eau Claire Student Research Day—Poster Session 22-23 April 2002.

—. See Edward Young, same department.

Young, Edward, with **Ravshan Yakubov**, undergraduate student, same department. “Uzbekistan: Past, Present, and Future: The War Against Terrorism and Its Impact.” Faculty/Student Research Collaborative Project.

—. See Ravshan Yakubov, same department.

ENGLISH

Dr. Martin Wood, Department Chair
433 Hibbard Humanities Hall
715/836-2639

Anaya, Stephanie, undergraduate student. See David Jones, same department.

Belanger, Rebekah, undergraduate student, with **Erna Kelly**, same department. Writing Internship. 2001-2002.

Beger, Kate, undergraduate student. See Kate Mastruserio Reynolds, Foreign Languages.

Boster, Daniel, graduate student, with **Karen Welch**, same department. “Assessing the Value of Institution-Wide Requirements for Writing-Intensive Courses Beyond the First-Year Composition Course.” UW-Eau Claire Student Research Day—Poster Session 22-23 April 2002, Faculty/Student Research Collaborative Project.

Bushnell, Jack. “Falling Into Joy.” *Tampa Review* 23 (2002): 45-47.

—. “Why Baseball Matters.” *Elysian Fields Quarterly* 19.2 (2002): 9-14.

Butler, Amanda, undergraduate student, with **Erna Kelly**, same department. Writing Internship. 2001-2002.

Carroll, Jan, undergraduate student, with **Erna Kelly**, same department. Writing Internship. 2001-2002.

Conery, Erin, undergraduate student. See Richard Nimke, Music and Theatre Arts.

Cronje, Ruth. “The Potential for Rationality: Rhetorical as Communicative Action.” *Arguing Communication and Culture; NCA/AFA Conference on*

Argumentation. Ed. G. T. Goodnight. Aug. 2001. 267-273.

—, with **Amanda Fullan**, undergraduate student, same department. “Evidence-Based Medicine: Defining Evidence.” UW-Eau Claire Student Research Day—Poster Session 22-23 April 2002.

—, with **Amanda Fullan**, undergraduate student, same department. “Evidence-Based Medicine: The Definition of Good Medical Practice?” Summer Research Experiences for Undergraduates Grant.

— See Gloria Hochstein, same department.

Fullan, Amanda, undergraduate student, with **Erna Kelly**, same department. Writing Internship. 2001-2002.

—, undergraduate student. See Ruth Cronje, same department.

Garland, Max. “Bible Days.” *Cream City Review* 26 (Fall 2002): 19.

— “Scene from a Window Near the Austin Airport” and “What About the Light on the Window?” *The Gettysburg Review* V.15 (Spring 2002): 124-127.

Hanson, Charles, with **Meng Yang**, undergraduate student, same department. “Hmong Storytelling Through Four Mediums.” UW-Eau Claire Student Research Day—Poster Session 22-23 April 2002.

Hildebrand, John. “The Appraisal.” *HARPER’S*. Nov. 2001: 56-63.

Hochstein, Gloria, with **Taina Hulett**, undergraduate student, same department. “Afterword, English Alumni Newsletter.” Fall and Spring 2001-2002. Two issues.

—, with **Ruth Cronje**, same department, **Julie Peterson**, Communication and Journalism, and **Karen Welch**, same department. Progress Report. “WIND-EAU Project, Writing in the Disciplines at UW-Eau Claire.” Eau Claire, WI, Feb. 2002.

Hoffman, Keith, undergraduate student, with **Erna Kelly**, same department. Writing Internship. 2001-2002.

Horton, Joseph, undergraduate student. See David Jones, same department.

Hoy, Matthew, undergraduate student. “Networking the Ivory Tower.” *Craft, Critique, Culture*, Iowa City, IA—Oral Presentation. 11-13 April 2002.

Hulett, Taina, undergraduate student. See Gloria Hochstein, same department.

Jerz, Dennis. “Brief History of Interactive Fiction.” *Storytelling in Computer Games/UW-Eau Claire English Festival*, Eau Claire, WI, May 2001. Ed. Matt Hoy and Dennis Jerz. *XYZZY News*, 2001. <<http://www.xyzzynews.com/xyzzzy.20c.html>>.

— “Fine Tuned: An Auto-mated Romance (interactive fiction).” *Freeware*. 2001. <<http://www.wurb.com/if/game/1669>>.

—, ed., with **Roger Firth** and **Sonja Kesserich**. “Inform Beginner’s Guide.” By Roger Firth and Sonja Kesserich. St. Charles, Illinois: Interactive Fiction Library, 2002. <http://www.inform-fiction.org/manual/about_ibg.html>.

— See April La Blanc, same department.

Jones, David, with **Stephanie Anaya**, **Guillermo Mendez-Gorski**, and **Joseph Horton**, undergraduate students, same department. “African American Music in the Upper Midwest: Music Performance, Student-Run Radio, and Cultural Change.” UW-Eau Claire Student Research Day—Poster Session 22-23 April 2002, Faculty/Student Research Collaborative Project.

— “‘Women’s Lib,’ Gender Theory, and the Politics of Home: How I Became a Black Male Feminist.” *Feminist Teacher* 13.3 (2001): 213-224. <www.uwec.edu/academic/wmns/feminist_teacher/>.

Kelly, Erna. “Portraits: Self and Others.” *Teaching Tudor and Stuart Women Writers*. Eds. Margaret Hannay and Susanne Woods. New York: Modern Language Association, 2001. 248-252.

— See Rebekah Belanger, Amanda Butler, Jan Carroll, Amanda Fullan, Keith Hoffman, Kelly Marcks, Caleb Olson, Matthew Patterson, Rachel Thom, and Anne Wendt, same department.

Kemp, Theresa. Ed. *Feminist Teacher*. Eau Claire: Feminist Teacher Editorial Collective, 13.1-3 (2001).

— “*The Knight of the Tower* and the Queen in Sanctuary: Elizabeth Woodville’s Use of Meaningful Silence and Absence.” *New Medieval Literatures* 4

(2001): 171-88. Selected as the June 2002 "Article of the Month" by *Feminae: Medieval Women and Gender Index* (Haverford University).

—. Rev. of *Pure Resistance: Queer Virginity in Early Modern English Drama* by Theodora A. Jankowski. *Clio: A Journal of Literature, History and the Philosophy of History* 31.2 (2002): 203-209.

—. Rev. of *Shakespeare and the Loss of Eden: The Construction of Family Values in Early Modern England* by Catherine Belsey. *Review* 24 (2002): 135-44.

La Blanc, April, undergraduate student, with **Joel Pace** and **Dennis Jerz**, same department. "Stewart Conn: Scottish Poet." Independent study. Fall 2001-Spring 2002. Website.

Loeb, Karen. "The Bamboo Inn." *WHITE CROW* 5.3 (2002): 23-27.

Manning, Carmen, with **K. Sisserson** and **A. Knepler**, University of Illinois Chicago, and **D. Jolliffe**, DePaul University. "Criteria for Measuring Authentic Intellectual Achievement in Writing." *Practice in Context: Situating the Work of Writing Teachers*. Eds. C. Moore and P. O'Neill. Urbana, IL: National Council of Teachers of English, 2002.

—, with **K. Sisserson** and **A. Knepler**, University of Illinois Chicago, and **D. Jolliffe**, DePaul University. "Authentic Intellectual Achievement in Writing." *English Journal* 91 (2002): 63-69.

Marcks, Kelly, undergraduate student, with **Erna Kelly**, same department. Writing Internship. 2001-2002.

Mendez-Gorski, Guillermo, undergraduate student. See David Jones, same department.

Oates, Scott F. "Infusing College Composition and Rhetoric into Liberal Education." *Rhetoric Review* 21.1 (2002).

—. "Literacy as an Everyday Practice." *Constructions of Literacy: Studies of Teaching and Learning in Secondary Schools*. Eds. D. O'Brien and E. Moje. Lawrence Erlbaum Associates, 2001.

Olson, Caleb, undergraduate student, with **Erna Kelly**, same department. Writing Internship. 2001-2002.

Pace, Joel, with **Chris Koenig-Woodyard**, Morgan State University. "Coleridge and Divine Providence." *The Wordsworth Circle* 32.3 (2001): 138-141.

—. "John Nicholas Brown Center Fellowship, Brown University." Summer, Fall, and Spring 2000-2002.

—. "New Years." *In Our Own Words, Vol. 3*. Ed. Marlow Peerse Weaver. Raleigh, NC: MW Enterprises, 2001. 22, 70, 99.

—. See April La Blanc, same department.

Patterson, Matthew, undergraduate student, with **Erna Kelly**, same department. Writing Internship. 2001-2002.

Phillips, William H. "Film: An Introduction, 2nd. Ed." New York & Boston: Bedford/St. Martin's, 2002.

Sen, Asha. "Allegories of Women, Nation, and Empire in Salman Rushdie's East, West Stories." *Kunapipi: Journal of Postcolonial Writing*. Xxiii.2 (2001): 121-44. <www.uow.edu.au/arts/kunapipi>.

Taylor, Bruce. "Exercise." *Vestal Review*. Ed. Mark Budman. 7 (Oct. 2001): <www.vestalreview.net/exercise.htm>.

—. "January: Sunny and Cold, The Bus." *New Works*. Ed. Peter Desy. 5.1 (2002).

—. "Poetry, Booze, Sex, Music, Love and Death" and "What They Can and Cannot Fake." *Slow Trains*. Ed. Bill Nobel. 1.4 (Spring 2002): <www.slowtrains.com/issue4/taylorissue4.html>.

—. "The Separation." *Spilt Verse: Poetry of Separation and Divorce*. Eds. Meg Campbell and Duke William. Midmarch Arts: New York, 2001. 19.

—. See Patti See, Academic and Career Services.

Thom, Rachel, undergraduate student, with **Erna Kelly**, same department. Writing Internship. 2001-2002.

Welch, Karen. See Daniel Boster and Gloria Hochstein, same department.

Wendt, Anne, undergraduate student, with **Erna Kelly**, same department. Writing Internship. 2001-2002.

Yang, Meng, undergraduate student. See Charles Hanson, same department.

FAMILY HEALTH NURSING

Dr. Elaine Wendt, Department Chair
238 School of Nursing
715/836-5515

Anderson, Kathryn Hoehn, with **Amalie Meyer**, **Kathryn Forkrud**, **Jennifer Greiber**, and **Dianna Moll**, undergraduate students, same department. “Collecting and Analyzing Data from Couple Interaction During Breast Cancer.” Faculty/Student Research Collaborative Project.

—, with **Amalie Meyer**, **Kathryn Forkrud**, **Jennifer Greiber**, and **Dianna Moll**, undergraduate students, same department. “The Effects of Chronic Illness on Marriage.” UW-Eau Claire Student Research Day—Poster Session 22-23 April 2002.

—, with **A. Collins**, Director of Head Start at Lac du Flambeau School, **C. Rencontre**, Education Coordinator at Lac du Flambeau Community, **R. Barganz**, Curriculum and Instruction, **Linda Carpenter**, Communication Disorders, and **J. Todd Stephens**, Special Education. “Windows to Understanding: An Early Literacy Service-Learning Opportunity and Partnership with the Lac du Flambeau Tribe, Lac du Flambeau Public Schools, and University of Wisconsin-Eau Claire Human Development Center.” 2001 Wisconsin Indian Education Association Annual Conference, Madison, WI—Symposium Presentation. April 2001.

—, “Couple Breast Cancer Research and Couple Interaction.” The National Council on Family Relations, Minneapolis, MN—Poster Presentation. Nov. 2000.

—, “Issues Affecting Marital Interaction in Couples with Breast Cancer.” 2001 Sigma Theta Tau International Conference, Copenhagen, Denmark—Poster Presentation. June 2001.

—, with **K. L. Valentine**, Blue Shield, San Francisco, CA. “Challenges of Evaluating a Family Nursing Center- Comparing Pre and Post Data.” 5th International Family Nursing Conference in Chicago, IL—Paper Presentation. July 2000.

—, with **K. L. Valentine**, Blue Shield, San Francisco, CA. “Family Health Interventions: Helping Middle-Aged/Older Families with Difficulty Coping with Chronic Illness.” 5th International Family Nursing Conference in Chicago, IL—Paper Presentation. July 2000.

Dahlin, Lisa, undergraduate student. See S. D. Moch, same department.

Dauids, Kim, undergraduate student. See S. D. Moch, same department.

Forkrud, Kathryn, undergraduate student. See Kathryn Hoehn Anderson, same department.

Geissler, Emily, undergraduate student. See Nola Schmitt, same department.

Greiber, Jennifer, undergraduate student. See Kathryn Hoehn Anderson, same department.

Gueldenzopf, Samantha, undergraduate student. See S. D. Moch, same department.

McDaniel, Jessica, undergraduate student. See S. D. Moch, same department.

Meyer, Amalie, undergraduate student. See Kathryn Hoehn Anderson, same department.

Moch, S. D., with **Carol White**, alumnus. “Student Mentoring from the Mentor’s Perspective.” Spring 2001. Collaborative Project.

—, with **Jessica McDaniel**, undergraduate student, same department, **Connie Jaenicke** and **Anna Rydberg**, alumni, **Sue Johnston**, Chippewa Valley Technical College, and **Carol White**, alumnus. “New Knowledge Into Practice Discussion Groups: Description and Evaluation from Five Settings.” Contesting Conversations of Nursing and Midwifery, Adelaide, Australia, 6 Nov. 2001. *Abstract Book*.

—, with **Jessica McDaniel**, undergraduate student, same department. “New Knowledge Discussion Groups: Grant Writing for a Pilot Evaluation Study.” Faculty/Student Research Collaborative Project.

—, with **Jessica McDaniel**, undergraduate student, same department. “Student and Alumni Research Experiences.” Fall 2001. Collaborative Project.

—, with **Jessica McDaniel**, undergraduate student, same department, **Tracy TeSelle** and **Connie Jaenicke**, alumni, **Kathleen Shadick** and **Joan Hamblin**, UW-Family Medicine Clinic. “Evaluations of Three Interdisciplinary New Knowledge into Practice Discussion Groups.” Spring 2002. Collaborative Project.

—, with **Jessica McDaniel** and **Samantha Gueldenzopf**, undergraduate students, same department. “Drop in Group Medical Appointments: A Partnership Between UW Family Medicine Clinic and UW-Eau Claire Nursing.” Faculty/Student Research Collaborative Project.

—, with **Jessica McDaniel** and **Samantha Gueldenzopf**, undergraduate students, same department. “Undergraduate Students as Research Assistants: What, Why and How.” UW-Eau Claire Student Research Day—Poster Session 22-23 April 2002.

—, with **Jessica McDaniel**, undergraduate student, same department. “Undergraduate Students as Research Assistants.” Spring 2002. Collaborative Project.

—, with **Lisa Dahlin**, **Kim Davids**, **Samantha Gueldenzopf** and **May Yang**, undergraduate students, same department. “Grant Learning and Writing Through Collaboration.” Spring 2002. Collaborative Project.

Moll, Dianna, undergraduate student. See Kathryn Hoehn Anderson, same department.

Schmitt, Nola, with **Emily Geissler**, undergraduate student, same department. “Nurses’ Experiences of Touch and Healing.” UW-Eau Claire Student Research Day—Poster Session 22-23 April 2002, Faculty/Student Research Collaborative Project.

Solheim, Karen. “Curious Rendezvous.” *Fetishes: A Literary Journal of the University of Colorado Health Sciences Center* VII (2001): 22.

—, “Family Nurse Practitioner Services.” Extramural Grant. Bircher Chiropractic and Wellness Center. \$3,485.

Wendt, Elaine. “Interdisciplinary Family-Focused Health Care Across Cultures.” Extramural Grant. U.S. Department of Education. \$14,533.

Yang, May, undergraduate student. See S. D. Moch, same department.

FINANCIAL AID

Ms. Kathleen Sahlhoff, Director
115B Schofield Hall
715/836-3373

Sahlhoff, Kathleen. “Federal Work Study.” Extramural Grant. U.S. Department of Education. \$1,136,232.

—, “Pell Grant 2001-02.” Extramural Grant. U.S. Department of Education. \$4,258,861.

—, “Perkins.” Extramural Grant. U.S. Department of Education. \$288,151.

—, “SEOG.” Extramural Grant. U.S. Department of Education. \$754,258.

FOREIGN LANGUAGES

Dr. Richard Gunn, Interim Department Chair
378 Hibbard Humanities Hall
715/836-4287

Allen, Jennifer, undergraduate student, with **Eva Santos-Phillips**, same department. “Creating Space for Women to Create: A Closer Look at Mexican Dramatist Sabina Berman’s Plays ‘El gordo, la pajara y el narco’ and ‘Muerte subita.’” UW-Eau Claire Student Research Day—Poster Session 22-23 April 2002.

—, See Eva Santo-Phillips, same department.

Asuquo, Chris, undergraduate student. See Kate Mastruserio Reynolds, same department.

Bolton, Stacey, undergraduate student. See Kate Mastruserio Reynolds, same department.

Crouse, Gale, with **Carter Smith**, same department, and **Sara Doering**, undergraduate student, same department. “The 2002 Central States REPORT, A Start-to-Finish Editing Project.” UW-Eau Claire Student Research Day—Poster Session 22-23 April 2002, Faculty/Student Research Collaborative Project.

—, ed., with **Sara Doering**, undergraduate student, same department, and **Carter Smith**, same department. “Sustaining Change: New Directions as Standard Practice.” By Gale Crouse, Sara Doering, and Carter

Smith. Columbus, OH, Central States Conference, 2002.

— . See Carter Smith, same department.

Dahl, Angie, undergraduate student. See Kate Mastruserio Reynolds, same department.

Day, Patrick, with **Bobby Kuechenmeister**, undergraduate student, same department. “Toward a New Definition of Tragedy.” UW-Eau Claire Student Research Day—Poster Session 22-23 April 2002, Summer Research Experiences for Undergraduates Grant.

Doering, Sara, undergraduate student. See Gale Crouse and Carter Smith, same department.

Fricano, Joseph, undergraduate student. See Kate Mastruserio Reynolds, same department.

Gustad, Katie, undergraduate student, with **Martina Lindseth**, same department. “Language Policies of the European Union: With Special Reference to Minority Languages.” Summer Research Experiences for Undergraduates Grant, UW-Eau Claire Student Research Day—Poster Session 22-23 April 2002, Sixteenth National Conference on Undergraduate Research. Whitewater, WI, 25-27 April 2002. *Abstract Book*. Whitewater, WI: University of Wisconsin, 2002. 163.

— . See Martina Lindseth, same department.

Hoff, Nuria I. See Paul J. Hoff, same department.

Hoff, Paul J., with **Nuria I. Hoff**, same department. *Somos Así: ¡Ya! - Grammar and Vocabulary Exercises*. St. Paul: EMC/Paradigm Publishing, 2002.

Holm, Jessica, undergraduate student. See Johannes Strohschänk, same department.

Iribarren, Mary, with **Kimberlee Sapetta**, undergraduate student, same department. “Estudios de la Mondragon Corporacion Cooperativa.” UW-Eau Claire Student Research Day—Poster Session 22-23 April 2002.

Kuechenmeister, Bobby, undergraduate student. See Patrick Day, same department.

Lefler, Jennifer, undergraduate student. See Johannes Strohschänk, same department.

Lindseth, Martina, with **Angelika Soldan**, University of Texas-Brownsville. “Cease to Exist or Cease to Fear? The Sorbian Population After German Reunification.” *European Studies Conferences: Selected Papers 1993-1999*. Ed. Karl Odwarka and David Stefancic. Omaha, NE 14-16 Oct. 1999. Vienna: Verlag Edition Praesens, 2001. 161-170.

— , with **Katie Gustad**, undergraduate student, same department. “Keynote Speech: Introduction of the European Union in the Foreign Language Classroom.” Wisconsin Association of Foreign Language Teachers Winter Workshop, Madison, WI—Oral Presentation. 16 Feb. 2002.

— . See Katie Gustad, same department.

Peters, Elizabeth, undergraduate student. See Kate Mastruserio Reynolds, same department.

Reynolds, Kate Mastruserio, with **Chris Asuquo**, undergraduate student, same department, **Kate Beger**, undergraduate student, English, **Elizabeth Peters** and **Dean Tsantir**, undergraduate students, same department, **Oleg Yefimov**, undergraduate student, Curriculum and Instruction, **Stacey Bolton**, **Joseph Fricano**, and **Angie Dahl**, undergraduate students, same department. “Student-Teacher Discourse Acquisition via In-Class Listserves.” 36th Annual Teaching English to Speakers of Other Languages Conference, Alexandria, VA—Oral Presentation. 9-13 April 2002.

— . “Viewing Vygotsky’s Sociocultural Theories in Practice.” *Ohio TESOL Newsletter* 26.1 (2002): 24-25.

Sapetta, Kimberlee, undergraduate student. See Mary Iribarren, same department.

Santos-Phillips, Eva. “Abrogation and Appropriation in Rosario Ferré’s ‘Amalia.’” *Studies in Short Fiction* 35.2 (1998): 117-128.

— , with **Jennifer Allen**, undergraduate student, same department. “Gender Issues in the Literature of Sabina Berman.” Summer Research Experiences for Undergraduates Grant.

— . See Jennifer Allen, same department.

Smith, Carter, with **Gale Crouse**, same department, **Sara Doering**, undergraduate student, same department. “Sustaining Change: New Directions as

Standard Practice.” Report of the Central States Conference, Valdosta, GA: Lee Bradley, 2002.

—. “The City as Political Metaphor: End-of-the-Century Constructions of Madrid.” *International Journal of Iberian Studies* 14 (2001): 80-94.

—. See Gale Crouse, same department.

Strohschänk, Johannes, with **Jennifer Lefler, Jessica Holm** and **Sarah Watson**, undergraduate students, same department. “Re-Interpreting the Schlegelmilch House: A Collaboration With the Chippewa Valley Museum.” Faculty/Student Research Collaborative Project.

—, with **Kara Ziehl**, undergraduate student, same department. “Differentiated Patterns of Migration Between the German States and the Counties of Wisconsin: 1850 – 1860.” Summer Research Experiences for Undergraduates Grant.

—. “Review from WAFLT 2001: Keynote Speech by John DeMado.” *The Voice of WAFLT* 29.2 (Spring/Summer 2002): 14-15.

—. “The Official Word vs. the Horse’s Mouth: Descriptions of Wisconsin for the German Emigrant in the 1850s.” *Yearbook of German-American Studies* 36 (2001): 129-156.

—. “Transcription of 19th Century German Emigrant Letters and Diary.” Blugold Fellowship. Spring 2002. Book project.

Thevenin, Dominique. Rev. of *Depuis toute la vie* by Jean-Marc Parisis. *The French Review* 75.3 (Feb. 2002).

—. Rev. of *Osmose* by Yann Queffélec. *The French Review* 75. 4 (Mar. 2002).

—. Rev. of *Pendant la chaleur du jour* by Hugues Pradier. *The French Review* 74.4 (Mar. 2001).

Tsantir, Dean, undergraduate student. See Kate Mastruserio Reynolds, same department.

Vahlbusch, Jefford. “Experiential Education Abroad: Service-Learning, Project-Based Learning, and Internships in Germany.” Ed. Gale K. Crouse, Sara K. Doering, and Carter E. Smith. *Sustaining Change: New Directions as Standard Practice. Selected Papers from the 2002 Central States Conference on the Teaching of*

Foreign Languages. Kansas City, MO, 21-23 March 2002. Valdosta, Georgia: Lee Bradley, Valdosta State University, 2002. 129-139.

Valero, Jose, with **Stephanie Zighelboim**, graduate student, same department. “A Sociopolitical Reading of Rivas’ Don Alvaro o la Fuerza del ino.” Faculty/Student Research Collaborative Project.

Waters, Matt. Four Entries in *The Prosopography of the Neo-Assyrian Empire, Volume 2, Part II: L-N*. Ed. H. Baker. Winona Lake: Eisenbrauns, 2002. 651, 743, 748, and 959.

—. “Mesopotamian Sources and Neo-Elamite History.” *Historiography in the Cuneiform World, Proceedings of the XLVe Rencontre Assyriologique Internationale, Volume I Boston MA 1998*. Ed. T Abusch et al. Bethesda: CDL Press, 2001. 473-482.

—. Rev. of *Athens and Persia in the Fifth Century BC: A Study in Cultural Receptivity* by M. Miller. *Journal of Near Eastern Studies* 60 (2001): 319-320.

—. Rev. of *Bulletin d’histoire achéménide II* by P. Briant. *Bryn Mawr Classical Review* 10.40 (2001): <<http://ccat.sas.upenn.edu/bmcr/2001/2001-10-40.html>>.

Watson, Sarah, undergraduate student. See Johannes Strohschänk, same department.

Ziehl, Kara, undergraduate student. See Johannes Strohschänk, same department.

Zighelboim, Stephanie, graduate student. See Jose Valero, same department.

FOUNDATIONS OF EDUCATION

Dr. Roger Tlusty, Department Chair
154A Brewer Hall
715/836-2635

Gray-Mash, Cynthia, with **Jeff Shurtleff**, undergraduate student, same department. “Termespheres: Total Worlds.” Documentary. 21st Annual Breckenridge Festival of Film, Breckenridge, CO, 16 Sept. 2001.

Her, Kang Bao, undergraduate student. See Katherine A. Rhoades, same department.

Ikuta, Juanita, graduate student. See Carol M. Koroghlanian, same department.

Johnson, James, undergraduate student. See Katherine A. Rhoades, same department.

Koroghlanian, Carol M., with **Jonathan Brinkerhoff**, University of New Mexico, and **James D. Klein**, Arizona State University. "Effects of Overviews and Computer Experience on Learning from Hypertext." *Journal of Educational Computing Research* 25.4 (2001): 427-440.

—, with **Juanita Ikuta**, graduate student, same department. "Managing a Progressive Student Run Technology Lab." Association for Educational Communications and Technology (AECT) Conference, Atlanta, GA—Presentation. 7-10 Nov. 2001.

Rhoades, Katherine A., with **Anne Statham** and **Mary Kay Schleiter**, UW-Parkside. "Women's Studies and the Women and Poverty Public Education Initiative." *Teaching Feminist Activism: Strategies From the Field*. Ed. Nancy A. Naples and Karen Bojar. New York: Routledge, 2002. 221-233.

—, with **James Johnson**, undergraduate student, same department. "Walking the Talk: Exploring Diversity on a College Campus." UW-Eau Claire Student Research Day—Poster Session 22-23 April 2002, Faculty/Student Research Collaborative Project.

—, with **Kang Bao Her**, undergraduate student, same department. "Educating Edgewalkers: Hmong-American Teachers and the Process of Becoming Bilingual/Bicultural Educators." Summer Research Experiences for Undergraduates Grant.

—, with **Sue Mc Intyre**, **Robert Hollon** and **William P. Dunlap**, Curriculum and Instruction, and **J. Todd Stephens**, Special Education. Monograph "A Third Year Report: A Collaborative Research Study Comparing the Preparation of Teachers at Fukushima University, Japan and UW-Eau Claire, USA." Japan. Spring 2002.

Shurtleff, Jeff, undergraduate student. See Cynthia Gray-Mash, same department.

Trusty, Roger, with **Seth Zlotocha**, undergraduate student, same department. "Inquiring About History: Learning and Teaching the Historian's Craft." Faculty/Student Research Collaborative Project.

—, with **Seth Zlotocha**, undergraduate student, same department. "Investigating the Historian's Craft: Teaching Students the Processes of Historical Inquiry." UW-Eau Claire Student Research Day—Poster Session 22-23 April 2002.

Zlotocha, Seth, undergraduate student. See Roger Trusty, same department.

GEOGRAPHY-SEM I

GEOGRAPHY AND ANTHROPOLOGY-SEM II

Dr. J. Brady Foust, Department Chair
260 Phillips Science Hall
715/836-3244

Barth, Robert. "Archaeological Investigation of the CTH Z Bridge." Extramural Grant. Ayres Associates. \$978.

—, "Archaeological Survey of the Kinnickinnic River Pine Creek and Hatfield Lake." Extramural Grant. Wisconsin Department of Natural Resources. \$4,572.

—, "Archaeological Survey in Eau Claire, Pierce, and Shawano Counties." Extramural Grant. U.S. Department of Agriculture. \$2,401.

—, with **Phillip Ihinger**, Geology, and **Molly Sandgren**, undergraduate student, Geology. "Fingerprinting the Source of Obsidian Artifacts from Wisconsin: Ancient, Long-Range Intricate Trade Routes, or Simply Local Commerce?" Faculty/Student Research Collaborative Project.

—, "Replacement of the Bluff Creek Bridge." Extramural Grant. Krech Ojard & Associates. \$978.

—, with **Phillip Ihinger**, Geology, and **Molly Sandgren**, undergraduate student, Geology. "Geochemical Analysis and Sourcing of Wisconsin Obsidian Artifacts." UW-Eau Claire Student Research Day—Poster Session 22-23 April 2002.

Bawden, Tim, with **Jon Kramer**, undergraduate student, same department. "Home Away From Home: History of Tourism in Door County." UW-Eau Claire Student Research Day—Poster Session 22-23 April 2002.

Bowen, Katie, undergraduate student. See J. Brady Foust, same department.

Bradford, Marc, undergraduate student. See Sean Hartnett and Harry Jol, same department.

Brown, Erin, undergraduate student. See J. Brady Foust, same department.

DeChaine, Ryan, undergraduate student. See Harry Jol and Garry Running, same department.

Dillivan, Christy, undergraduate student. See J. Brady Foust, same department.

Durni, Jed, undergraduate student. See Harry Jol, same department.

Faulkner, Douglas, with **Tobi Rutten**, undergraduate student, same department. "Persisting Sediment Yields and the Role of Tributary Streams in the Lower Buffalo River Watershed, Buffalo County, Wisconsin." Summer Research Experiences for Undergraduates Grant.

—, with **Tobi Rutten**, undergraduate student, same department. "The Relationship of Persisting High Sediment Yields to Land Use and Forest Cover Change in the Buffalo River Watershed: A GIS-Based Analysis." Faculty/Student Research Collaborative Project.

—, with **Tobi Rutten**, undergraduate student, same department. "Tributary Stream Channel Stability in the Buffalo River Watershed, West-Central Wisconsin." UW-Eau Claire Student Research Day—Poster Session 22-23 April 2002.

Forbes, Jack, undergraduate student. See Daniel Strouthes, same department.

Foust, J. Brady, with **Lisa Theo**, same department, **Katie Bowen**, **Christy Dillivan**, **Amanda Reiter** and **Steven Zaun**, undergraduate students, same department. "Midwest University Enrollment Change 1980-2000." UW-Eau Claire Student Research Day—Poster Session 22-23 April 2002.

—, with **Lisa Theo**, same department, **Lori Hafeman**, **Paul Sandstrom** and **Rubin Seifert**, undergraduate students, same department. "Country Population Change and the Interstate Highway System 1950-2000." UW-Eau Claire Student Research Day—Poster Session 22-23 April 2002.

—, with **Lisa Theo**, same department, **Patrick Hahn** and **Tobi Rutten**, undergraduate students, same department. "Distribution of Parking Permits at the University of Wisconsin-Eau Claire Campus." UW-Eau

Claire Student Research Day—Poster Session 22-23 April 2002.

—, with **Lisa Theo**, same department, and **Patrick Mc Guinness**, undergraduate student, same department. "Drug Cases at the University of Wisconsin-Eau Claire from 1997-2002." UW-Eau Claire Student Research Day—Poster Session 22-23 April 2002.

—, with **Lisa Theo**, same department, **Sandy Yassin** and **Erin Brown**, undergraduate students, same department. "Effects of Population and Income on Educational Opportunities in Wisconsin." UW-Eau Claire Student Research Day—Poster Session 22-23 April 2002.

—, See Lisa Theo, same department.

Hafeman, Lori, undergraduate student. See J. Brady Foust and Lisa Theo, same department.

Hahn, Patrick, undergraduate student. See J. Brady Foust and Harry Jol, same department.

Hartnett, Sean, with **Joel Stevens** and **Ryan Zahler**, undergraduate students, same department. "Comprehensive GPS Survey of Lower Chippewa River Field Station Site." Faculty/Student Research Collaborative Project.

—, with **Rubin Seifert** and **Marc Bradford**, undergraduate students, same department. "Differential Global Positioning Systems (DGPS) Survey of Erosional Cut-banks on the Lower Chippewa River." Summer Research Experiences for Undergraduates Grant.

—, with **Rubin Seifert**, undergraduate student, same department. "DGPS of the Lower Chippewa River Cutbanks." UW-Eau Claire Student Research Day—Poster Session 22-23 April 2002.

—, See Garry Running, same department.

Haughton, P. V., undergraduate student. See Harry Jol, same department.

Heidtke, Erin, undergraduate student. See Lisa Theo, same department.

Ishigaki, Noriko, undergraduate student. See Helaine Minkus, same department.

Jol, Harry. "Cave of Letters: A Ground Penetrating Radar Study." Annual Meeting Abstract Book, Boulder,

CO, 14-17 Nov. 2001. *American Schools of Oriental Research*. 11.

—, with **P. Bauman**, Komex International Ltd., **R. Freund**, University of Hartford, **J. Shroder** and **P. Reeder**, University of Nebraska at Omaha.

“Archaeological Investigations in the Cave of Letters, The Qumran Cemetery, and Bethsaida.” The Annual Meeting for EEGS, Las Vegas, NV, 10-14 Feb. 2002. *Symposium on the Application of Geophysics to Engineering and Environmental Problems*. CD-ROM.

—, with **Daniel McDonnell**, undergraduate student, same department. “Zonation of Hapuna Beach Dunes: A Study of the Ecological Plant Structure on the Big Island of Hawaii.” UW-Eau Claire Student Research Day—Poster Session 22-23 April 2002.

—, with **Ryan DeChaine**, undergraduate student, same department, and **R. Eisenman**, California State University Long Beach. “Archaeological GPR Investigations at Rennes-Le-Chateau, France.” *The International Society for Optical Engineering 4758* (2002): 125-129.

—, “Ground Penetrating Radar Results in the Cave of Letters, Israel.” *GPR in Sediments: Applications and Interpretations International Conference*. London, England, 20-21 Aug. 2001.

—, “Ground Penetrating Radar in the Cave of Letters 2000 Project.” *Society of Biblical Literature International Conference*. Rome, Italy, 8-12 July 2001. 14.

—, with **Jed Durni** and **Ryan DeChaine**, undergraduate students, same department. “A Ground Penetrating Radar Investigation at Hapuna Beach, The Big Island Hawaii: Inspecting Sediment Supply, Stratigraphy, and Pocket Beach Erosion.” UW-Eau Claire Student Research Day—Poster Session 22-23 April 2002.

—, with **S. E. Kruse**, University of South Florida. “Amplitude and Waveform Analysis of Repetitive GPR Reflections: A Lake Bonneville Delta, Utah.” *Proceedings of SPIE 4758* (2002): 285-290.

—, with **S. E. Kruse**, University of South Florida. “Examples of GPR Waveform Modeling and AVO Analysis to Constrain Variations in Permittivity and Inductivity in Sedimentary Strata.” Applications and Interpretations International Conference, Geological Society of London and University College of London.

London, England 20-21 Aug. 2001. *GPR in Sediments*. CD-ROM.

—, with **M. Broshi**, Israel Museum, **H. Eshel**, Bar Ilan University, **R. A. Freund**, University of Hartford, **J. F. Shroder, Jr.** and **P. Reeder**, University of Nebraska at Omaha, and **R. Dubay**, University of California Irvine. “GPR Investigations at Qumran, Israel: Site of the Dead Sea Scrolls Discovery.” *The International Society for Optical Engineering 4758* (2002): 91-95.

—, with **L. J. Moore**, United States Geological Survey, Center for Coastal Studies, University of South Florida, and **G. Kaminsky**, Washington State Department of Ecology. “Exploring Linkages Between Coastal Processes and Climate Variability Using Ground Penetrating Radar, Southwest Washington, USA.” GPR in Sediments International Conference, Geological Society of London and University College of London, London, England, 20-21 Aug. 2001. *GPR in Sediments*. CD-ROM.

—, with **L. J. Moore**, United States Geological Survey, Center for Coastal Studies, University of South Florida, **G. Kaminsky**, Washington State Department of Ecology, **S. Vanderburg**, University College of the Fraser Valley, and **G. Gelfenbaum**, United States Geological Survey. “Linkages Between Shoreline Progradation and Climate, Southwest Washington, USA.” *EOS, Transactions, American Geophysical Union, Fall Meeting*. San Francisco, CA, 10-14 Dec. 2001. F654

—, with **Chris M. Morton**, undergraduate student, same department. “A Real-Time, Geo-Archaeological Database and Search Engine for the Cave of Letters, Israel.” *Geological Society of America Annual Meeting and Exposition Abstracts*. Boston, MA, 1-10 Nov. 2001. A-126.

—, with **B. Nicholson**, Brandon University, **S. Hamilton**, Lakehead University, and **Garry Running**, same department. “Ground Truthing Ground Penetrating Radar at the Lowton Site.” *Canadian Archaeological Association and Archaeological Society of Alberta, Annual Meeting*. Banff, Alberta, 9-13 May 2001. 74.

—, with **C. D. Peterson**, Portland State University, **S. Vanderburgh**, University College of the Fraser Valley, and **J. B. Phipps**, Grays Harbor College. “Ground Penetrating Radar as a Regional Geomorphic Mapping Tool: Shoreline accretion/erosion Along the Columbia River Littora Cell.” *Geological Society of America*

Annual Meeting and Exposition Abstracts. Boston, MA, 1-10 Nov. 2001. A-339.

—, with **J. B. Phipps**, Grays Harbor College, **C. D. Peterson**, Portland State University, and **S. Vanderburgh**, University College of the Fraser Valley. “Sand Dune Reactivation and Subduction Zone Earthquakes in the Grayland Area.” *Washington Geology* 28.3 (2001): 31-33.

—, with **J. B. Phipps**, Grays Harbor College, **S. Vanderburgh**, University College of the Fraser Valley, and **C. D. Peterson**, Portland State University. “Dunes and Earthquakes in Coastal SW Washington State.” *Geological Society of America Annual Meeting and Exposition Abstracts*. Boston, MA, 1-10 Nov. 2001. A-339.

—, with **Ross Kleiner**, **Patrick Hahn**, and **Marc Bradford**, undergraduate students, same department. “Investigation of Differential Global Positioning, The Big Island of Hawaii: Field Work from Hapuna Beach and Mauna Kea.” UW-Eau Claire Student Research Day—Poster Session 22-23 April 2002.

—, with **Garry Running**, same department. “A Ground Penetrating Radar Investigation of Mound K, the West Prairie Mound Group, Fort McCoy, Monroe County, Wisconsin.” Monroe, County: A Report Prepared for the Department of Defense, United States Army Reserve Command, Directorate of Training and Mobilization, 2002.

—, with **Garry Running**, same department, **D. Wiseman**, Brandon University, **Karen Havholm**, Geology, **A. Beaudoin**, Museum of Alberta, **M. Boyd**, Brandon University, and **A. Freeman**, University of Calgary. “Reconstructing Landscape Evolutions and Environmental Change at Temporal and Spatial Scales Relevant to Archaeology: A View from the Glacial Lake Hind Basin, Southwestern Manitoba.” *34th Annual CHACMOOL Conference, Program and Abstracts*. Calgary, AB, 14-18 Nov. 2001. CD-ROM.

—, with **Ryan DeChaine**, undergraduate student, same department. “GPR in Geoarcheology: A GPR Survey at Rennes-le-Chateau, Southern France.” UW-Eau Claire Student Research Day—Poster Session 22-23 April 2002.

—, with **Ryan DeChaine**, undergraduate student, same department. “Ground Penetrating Radar and Data Visualization from Selected Geomorphic and

Archaeological Sites.” Summer Research Experiences for Undergraduates Grant.

—, with **J. F. Shroder, Jr.**, University of Nebraska at Omaha. “The Bethsaida and El Araj Project: Geology and Geography.” *Society of Biblical Literature International Meeting*, Pontifical Gregorian University and Pontifical Biblical Institute. Rome, 8-12 July 2001. 41-56.

—, with **D. B. Sjogren**, University of Calgary, **T. G. Fisher**, Indiana University Northwest, **L. D. Taylor**, Albion College, and **M. J. Munro-Stasiuk**, Kent State University. “Incipient Tunnel Channels.” *Quaternary International* 90.1 (2002): 41-56.

—, with **Tobi Rutten** and **Chris M. Morton**, undergraduate students, same department. “Geographic Information Systems Analysis of Hapuna Beach, Big Island, Hawaii.” UW-Eau Claire Student Research Day—Poster Session 22-23 April 2002.

—, with **S. Vanderburgh**, University College of the Fraser Valley and **C. D. Peterson**, Portland State University. “Late-Holocene Sedimentation in the Bays and Estuaries of the Columbia River Littoral Cell, Washington and Oregon, USA.” *Geological Society of America Annual Meeting and Exposition Abstracts*. Boston, MA, 1-10 Nov. 2001. A-339.

—, with **A. P. Viavattine**, and **P. V. Haughton**, undergraduate students, same department, and **Garry Running**, same department. “A Ground Penetrating Radar Investigation of Mound B, the West Prairie Mound Group, Fort McCoy, Monroe County, Wisconsin.” A Report Prepared for the United States Army Reserve Command, Directorate of Training and Mobilization. 2002. Appendices and CD-ROM.

—, See Garry Running, same department and Karen Havholm, Geology.

Kevin, Brian, undergraduate student. See Helaine Minkus, same department.

Kleiner, Ross, undergraduate student. See Harry Jol, same department.

Kramer, Jon, undergraduate student. See Tim Bawden, same department.

Kyle, Shawn, undergraduate student. See Garry Running, same department.

Lahner, Joshua, undergraduate student. See Garry Running, same department.

Long, Kimberly, undergraduate student. See Garry Running, same department.

McDonnell, Daniel, undergraduate student. See Harry Jol, same department.

Mc Guinness, Patrick, undergraduate student. See J. Brady Foust, same department.

Meisel, Jennifer, undergraduate student. See Garry Running, same department.

Minkus, Helaine, with **Brian Kevin**, undergraduate student, same department. “Student Perspectives and Trends in Small Isolated Religious Congregations.” UW-Eau Claire Student Research Day—Poster Session 22-23 April 2002.

—, with **Noriko Ishigaki**, undergraduate student, same department. “The Social Networks of New International Students.” Faculty/Student Research Collaborative Project.

Moe, Eulalie, undergraduate student. See Lisa Theo, same department.

Morton, Chris M, undergraduate student. See Harry Jol, same department.

Mueller, Carrie, undergraduate student. See Lisa Theo, same department.

Ollendick, Casie, undergraduate student. See Garry Running, same department.

Orzech, Corinne, undergraduate student. See Garry Running, same department.

Palm, Richard. “Wisconsin Geographic Alliance.” Extramural Grant. National Geographic Society. \$25,000.

Porschien, Don, undergraduate student. See Garry Running, same department.

Reiter, Amanda, undergraduate student. See J. Brady Foust, same department.

Running, Garry, with **Casie Ollendick, Kimberly Long**, and **Joshua Lahner**, undergraduate students, same department. “Parabolic Dunes and Agricultural

Land Use: Glacial Lake Hind Basin, Southwestern Manitoba, Canada. 97th Annual Meeting of Association of American Geographers, New York, NY—Poster Presentation. 27 Feb.- 3 March 2001.

—, with **Don Porschien** and **Paul Sandstrom**, undergraduate students, and **Sean Hartnett**, same department. “Mapping the Accuracy of DGPS: A Comparison of Cost & Data Quality.” Association of American Geographers Annual Meeting, Los Angeles, CA—Poster Presentation. 19-23 March 2002.

—, Rev. of *Geoarchaeology in the Great Plains* by Ed. R. D. Mandel. *Plains Anthropologist* 47.180 (2001): 92-95.

—, with **Harry Jol**, same department, **Karen Havholm**, Geology, **Nicole Bergstrom**, undergraduate student, Geology, **Corinne Orzech** and **Ryan DeChaine**, undergraduate students, same department. “SCAPE Project Geoaarcheological Investigations: The 2001 Field Season.” Summer Research Experiences for Undergraduates Grant.

—, with **Joshua Lahner, Kimberly Long**, and **Casie Ollendick**, undergraduate students, same department. “Geomorphology of the Pembina Spillway, South Central Manitoba.” 97th Annual Meeting of the Association of American Geographers, New York, NY—Poster Presentation. 27 Feb.-3 March 2001. UW-Eau Claire Student Research Day—Poster Session 22-23 April 2002.

—, with **Joshua Lahner, Kimberly Long, Jennifer Meisel** and **Casie Ollendick**, undergraduate students, same department. “Paleovegetation Reconstruction of the Elkwater Lake Basin Locality, Cypress Hills, Southeaster Alberta.” 97th Annual Meeting of the Association of American Geographers, New York, NY—Poster Presentation. 27 Feb.-3 March 2001.

—, with **Karen Havholm**, Geology, and **Ryan DeChaine**, undergraduate student, same department. “Topographical and Paleoenvironmental Reconstruction of the Hokanson Archaeological Site, Tiger Hills, SW Manitoba.” Faculty/Student Research Collaborative Project.

—, with **Lisa Theo**, same department, **Karen Havholm**, Geology, and **Corinne Orzech**, undergraduate student, same department. “Modern Land Use in the Glacial Lake Hind Basin.” UW-Eau Claire Student Research Day—Poster Session 22-23

April 2002, Faculty/Student Research Collaborative Project.

—, with **M. Bailey** and **D. L. Harkness**, Nelson McIntyre Collegiate, **D. J. Wiseman**, Brandon University, and **Karen Havholm**, Geology. “From Field to Classroom & Back Again: A SCAPE Project Contribution to Geographic Literacy.” Association of American Geographers Annual Meeting, Los Angeles, CA—Poster Presentation. 19-23 March 2001. CD-ROM.

—, with **Ryan DeChaine** and **Corinne Orzech**, undergraduate students, same department, **D. Wiseman**, Brandon University, and **S. Hamilton**, Lakehead University. “Testing an Archaeological Hypothesis at the Hokanson Site, Tiger Hills, South Central Manitoba.” Association of American Geographers Annual Meeting, Los Angeles, CA—Poster Presentation. 19-23 March 2002.

—, with **Ryan DeChaine**, undergraduate student, same department. “GIS as Geoarchaeology: A GPR Survey at Rennes-le-Chateau at the Hokanson Site, Tiger Hills, South Central Minnesota.” UW-Eau Claire Student Research Day—Poster Session 22-23 April 2002.

—, with **Sean Hartnett**, same department, **Don Porschien**, and **Paul Sandstrom**, undergraduate students, same department. “Mapping the Accuracy of Global Positioning System Receivers: A Comparison of Cost, Data Quality, and Ease of Use.” UW-Eau Claire Student Research Day—Poster Session 22-23 April 2002.

—, with **V. T. Holliday** and **J. C. Knox**, UW-Madison, **C. R. Ferring**, University of North Texas, and **R. D. Mandel**, University of Kansas. “The Central Lowlands and Great Plains.” *Physical Geography of North America*. Ed. L. Orme. New York: Oxford University Press, 2001. 335-362.

—. See Harry Jol, same department, and Karen Havholm, Geology.

Rutten, Tobi, undergraduate student. See Douglas Faulkner, J. Brady Foust and Harry Jol, same department.

Sandstrom, Paul, undergraduate student. See J. Brady Foust and Garry Running, same department.

Schreck, Sarah, undergraduate student. See Lisa Theo, same department.

Seifert, Rubin, undergraduate student. See J. Brady Foust, Sean Hartnett and Ingolf Vogeler, same department.

Stevens, Joel, undergraduate student. See Sean Hartnett, same department.

Strouthes, Daniel. “Customary Law.” *Encyclopedia of Crime and Punishment*. Thousand Oaks, CA: Sage, 2002. 450-455.

—, with **Jack Forbes**, undergraduate student, same department. “The Role of the Marimba in Contemporary Quiche Society.” UW-Eau Claire Student Research Day—Poster Session 22-23 April 2002, Summer Research Experiences for Undergraduates Grant.

Theo, Lisa, with **Eulalie Moe**, undergraduate student, same department. “Restaurant Recycling in Wisconsin.” UW-Eau Claire Student Research Day—Poster Session 22-23 April 2002.

—, with **J. Brady Foust**, same department, **Erin Heidtke** and **Carrie Mueller**, undergraduate students, same department. “Mapping Confined Animal Feeding Operations (CAFOs) in the United States.” UW-Eau Claire Student Research Day—Poster Session 22-23 April 2002.

—, with **Lori Hafeman** and **Sarah Schreck**, undergraduate students, same department. “Upscale Upnorth: The Gilding of Wisconsin’s Northwoods.” UW-Eau Claire Student Research Day—Poster Session 22-23 April 2002, Faculty/Student Research Collaborative Project, Summer Research Experiences for Undergraduates Grant.

—. See J. Brady Foust and Garry Running, same department.

Viavattine, A. P., undergraduate student. See Harry Jol, same department.

Vogeler, Ingolf, with **Rubin Seifert**, undergraduate student, same department. “Eau Claire City Council Spatial Representation by District.” UW-Eau Claire Student Research Day—Poster Session 22-23 April 2002.

Yassin, Sandy, undergraduate student. See J. Brady Foust, same department.

Zahler, Ryan, undergraduate student. See Sean Hartnett, same department.

Zaun, Steven, undergraduate student. See J. Brady Foust, same department.

GEOLOGY

Dr. Robert Hooper, Department Chair
153 Phillips Science Hall
715/836-3732

Beranek, Luke, undergraduate student. See Bradford Burton, same department.

Bergstrom, Nicole, undergraduate student. See Garry Running, Geography and Anthropology, and Karen Havholm, same department.

Burton, Bradford, with **Carter Dettloff**, undergraduate student, same department. “Geology and Geochemistry of Lake Ecene-Oligocene Rhyolitic Volcanic Rocks, Carlin-Pinon Range, Elko County, Nevada.” Summer Research Experiences for Undergraduates Grant.

—, with **Melissa Weisheipl**, undergraduate student, same department. “GIS Mapping of the Robinson Mountain Quadrangle, Elko County, Nevada.” Faculty/Student Research Collaborative Project.

—, with **Melissa Weisheipl**, undergraduate student, same department. “Tertiary Volcanics of the Robinson Mountain 7.5 Minute Quadrangle, Carlin-Pinon Range, Elko, Nevada.” UW-Eau Claire Student Research Day—Poster Session 22-23 April 2002.

—, with **Phillip Ihinger**, same department, and **Joshua Carlisle**, undergraduate student, same department. “Geochemistry of Eocene-Oligocene Volcanic Rocks in the Carlin-Pinon Range, Elko County, Nevada.” UW-Eau Claire Student Research Day—Poster Session 22-23 April 2002, Faculty/Student Research Collaborative Project.

—, with **Phillip Ihinger**, same department, and **Luke Beranek**, undergraduate student, same department. “Geology and Geochemistry of the North Doherty Mountain Intrusive Complex, SW Montana.” UW-Eau Claire Student Research Day—Poster Session 22-23 April 2002.

Carlisle, Joshua, undergraduate student. See Bradford Burton, same department.

Chmielowiec, Jacob, undergraduate student. See Phillip Ihinger, same department.

Dettloff, Carter, undergraduate student. See Bradford Burton, same department.

Gordee, Sarah, undergraduate student. See J. Brian Mahoney, same department.

Hansen, Lisa, undergraduate student. See Karen Havholm, same department.

Havholm, Karen, with **Garry Running**, Geography and Anthropology, and **Nicole Bergstrom**, undergraduate student, same department. “Stratigraphy and Mid-Holocene Dune Activity, Oak Lake Sand Hills, Manitoba.” Faculty/Student Research Collaborative Project.

—, with **Lisa Hansen**, undergraduate student, same department. “Identifying and Expanding Resources for Teaching Geoscience to the Visually Impaired.” Faculty/Student Research Collaborative Project.

—, with **Lisa Hansen**, undergraduate student, same department. “Earth Science: Teaching Materials and Techniques for the Visually Impaired.” UW-Eau Claire Student Research Day—Poster Session 22-23 April 2002.

—, with **Nicole Bergstrom**, undergraduate student, same department. “Mid-Holocene Dune and Sand-Sheet Environment, Lauder Sandhills, Glacial Lake Hind Basin, Southwestern Manitoba, Canada.” UW-Eau Claire Student Research Day—Poster Session 22-23 April 2002.

—, with **Nicole Bergstrom**, undergraduate student, same department, **Harry Jol** and **Garry Running**, Geography and Anthropology. “Ground Penetrating Radar Investigations of Post-Glacial Stratigraphy, Flintstone Hill, SW Manitoba.” Ground Penetrating Radar in Sediments: Application & Interpretations Conference, Royal Geological Society, London, England—Poster Presentation. 20-21 Aug. 2001.

—, with **Paul Knippel**, undergraduate student, same department. “Investigation of the Local Mt. Simon Formation.” UW-Eau Claire Student Research Day—Poster Session 22-23 April 2002.

—, with **Paul Knippel**, undergraduate student, same department. “Investigation of Previously Unexposed Local Outcrops of the Cambrian Mt. Simon Sandstone.” Faculty/Student Research Collaborative Project.

—, See Harry Jol and Garry Running, Geography and Anthropology, and April Johnson, same department.

Hooper, Robert. See J. Brian Mahoney, same department.

Ihinger, Phillip, with **Benjamin Paulson**, undergraduate student, same department. “Crystal Factination in Mafic Alkaline Magmas: Insights into the Chemical Evolution of the Mantle.” UW-Eau Claire Student Research Day—Poster Session 22-23 April 2002, Faculty/Student Research Collaborative Project.

—, “Crystal Growth Speedometry Micro-FTIR Spectroscopy of Minerals.” Extramural Grant. National Science Foundation. \$55,064.

—, with **Jacob Chmielowiec**, undergraduate student, same department. “Computer Simulations of Crystal Growth Using Constraints from the Mineral Chemistry of Natural Crystals.” UW-Eau Claire Student Research Day—Poster Session 22-23 April 2002, Faculty/Student Research Collaborative Project.

—, See Robert Barth, Geography and Anthropology, and Bradford Burton, same department.

Johnson, April, undergraduate student, with **Karl Beaster** and **Joshua Kohn**, alumni, and **Karen Havholm**, same department. “Braided-Stream/Eolian Environment of Proterozoic Hinckley Sandstone, Keweenaw Rift, East-Central Minnesota.” Geological Society of America. Boston, MA, Oct. 2001. *Geological Society of America Abstracts with Programs*, v. 33. A229.

—, See J. Brian Mahoney, same department.

Knippel, Paul, undergraduate student. See Karen Havholm, same department.

Mahoney, J. Brian, with **April Johnson**, undergraduate student, same department. “Characteristics of Submarine Mass-Flow Deposits Adjacent to Nifty Volcanogenic Massive Sulphide Occurrences, Eastern Bella Coola.” UW-Eau Claire Student Research Day—Poster Session 22-23 April 2002.

—, with **April Johnson** and **Sarah Gordee**, undergraduate students, same department. “Geologic Evolution of the Bella Coola Region, West-Central British Columbia.” Summer Research Experiences for Undergraduates Grant.

—, with **Robert Hooper**, same department. “Mineral Studies of Coeur D’Alene Basin Sediments.” Extramural Grant. U.S. Geological Survey. \$20,000.

—, with **Sarah Gordee**, undergraduate student, same department. “Petrology of Granitic Suites in Eastern Bella Coola Area.” UW-Eau Claire Student Research Day—Poster Session 22-23 April 2002.

—, with **Sarah Prindiville**, undergraduate student, same department. “Geochemical Analysis of Glaciofluvial Sedimentation, Puget Lowland Washington: Constraints on Episode Provenance Shifts.” Faculty/Student Research Collaborative Project.

Paulson, Benjamin, undergraduate student. See Phillip Ihinger, same department.

Prindiville, Sarah, undergraduate student. See J. Brian Mahoney, same department.

Sandgren, Molly, undergraduate student. See Robert Barth, Geography and Anthropology.

Syverson, Kent, with **Jeremy Treague**, undergraduate student, same department. “GIS Analysis of Northern Wisconsin Glacial Till Units.” UW-Eau Claire Student Research Day—Poster Session 22-23 April 2002.

Tinker, John. “Groundwater Modeling in Eau Claire.” Extramural Grant. U.S. Environmental Protection Agency. \$23,576.

Treague, Jeremy, undergraduate student. See Kent Syverson, same department.

Weisheipl, Melissa, undergraduate student. See Bradford Burton, same department.

HEALTH SERVICES

Ms. Laura Chellman, Director
151 Crest Wellness Center
715/836-5954

Harvieux, Sarah. See Steven Tallant, Academic Affairs-Administrative.

HISTORY

Dr. Thomas Miller, Department Chair
715 Hibbard Humanities Hall
715/836-5176

Bissonnette, David, graduate student. See James Oberly, same department.

Butterfield, Shane, undergraduate student. See Jane Pederson, same department.

Byers, Jeremy, undergraduate student. See Selika Ducksworth-Lawton, same department.

Ducksworth-Lawton, Selika, with **Jason Tetzloff**, Academic Affairs-Administrative, and **Patricia Stovey**, graduate student, same department. "The Color of Culture: The Society of American Indians in Relation to the Activism of W.E.B. Du Bois and Black Nationalism, 1900-1934." Faculty/Student Research Collaborative Project.

—, with **Jeremy Byers**, undergraduate student, same department. "Armor, Firepower, and Men. Small Unit Tactics on the Eastern Front During World War II." Faculty/Student Research Collaborative Project.

—, with **Jeremy Byers**, undergraduate student, same department. "Tournaments in Steel: Small Unit Tactics in Combined Arms Warfare on the Eastern Front During World War II." UW-Eau Claire Student Research Day—Poster Session 22-23 April 2002.

— . See Robert Ecker, same department.

Ecker, Robert and **Rebecca Reid**, undergraduate students, with **Selika Ducksworth-Lawton**, same department. "Deacons for Defense and Justice." UW-Eau Claire Student Research Day—Poster Session 22-23 April 2002, Sixteenth National Conference on Undergraduate Research. Whitewater, WI, 25-27 April 2002. *Abstract Book*. Whitewater, WI: University of Wisconsin, 2002. 157. Faculty/Student Research Collaborative Project.

Gehring, Melissa, undergraduate student. See Geoff Peterson, Political Science.

Gough, Robert. "The Development of Tourism in Northern Wisconsin, 1890-1940." *Proceedings of the Twenty-Sixth Annual Meeting of the Forest History Association of Wisconsin*. Ed. Kurt Korten Hof. Stanley,

WI, 21-22 Sept. 2001. Marinette, WI: Forest History Association of Wisconsin, 2002. 31-36.

— . Rev of *Cooperative Commonwealth: Co-ops in Rural Minnesota, 1859-1939* by Steven J. Keillor. *Wisconsin Magazine of History* 85.1 (2001): 63.

Jackson, Steve, undergraduate student. See Eugenio Pinero, same department.

Lambert, Laura, undergraduate student. See James Oberly, same department.

Oberly, James, with **David Bissonnette**, graduate student, same department, **Laura Lambert** and **Seth Tyberg**, undergraduate students, same department. "Chippewa Treaty Rights: A Continuing Study." Faculty/Student Research Collaborative Project, Summer Research Experiences for Undergraduates Grant.

Pederson, Jane, with **Shane Butterfield**, undergraduate student, same department. "Christmas in Wisconsin, 1850-1980: A Digital Photoessay." UW-Eau Claire Student Research Day—Poster Session 22-23 April 2002.

—, with **Shane Butterfield**, undergraduate student, same department. "Pariah, Pedagogy, or Perfection? Wisconsin's Rural Communities, Their Schools, and Teachers, 1860-1990." UW-Eau Claire Student Research Day—Poster Session 22-23 April 2002.

Pinero, Eugenio, with **Steve Jackson**, undergraduate student, same department. "Bob Stone, Community Reform and the Role of the Individual in History." Faculty/Student Research Collaborative Project.

Reid, Rebecca, undergraduate student. See Robert Ecker, same department.

Stovey, Patricia, graduate student. See Selika Ducksworth-Lawton, same department.

Tyberg, Seth, undergraduate student. See James Oberly, same department.

Waters, Matt. See Foreign Languages.

HOUSING AND RESIDENCE LIFE

Mr. Charles Major, Director
112 Towers Hall North
715/836-5387

Thesing-Ritter, Jodi. See Steven Tallant, Academic Affairs-Administrative.

HUMAN DEVELOPMENT CENTER

Dr. William Frankenberger, Director
172 Human Sciences & Services
715/836-5020

Carlson, Steven, graduate student. See William Frankenberger, same department.

Chrouser, Christina, undergraduate student. See William Frankenberger, same department.

Dahms, Kimberly, graduate student. See William Frankenberger, same department.

Frankenberger, William, with **Kimberly Dahms,** graduate student, same department, **Melissa Irwin** and **Christina Chrouser,** undergraduate students, same department. "Stimulant Use and Abuse in Wisconsin Schools from the Student Perspective." Faculty/Student Research Collaborative Project.

—. "Lac du Flambeau Experience." Extramural Grant. Lac du Flambeau School. \$2,000.

—, with **Steven Carlson,** graduate student, and **Katarina House,** alumnus. "Swedish and American Teachers' Perspectives on ADHD Behaviors and the Use of Stimulant Medication." UW-Eau Claire Student Research Day—Poster Session 22-23 April 2002.

—, with **Trisha Groeschl,** graduate student, same department. "Lac du Flambeau Service Learning Opportunity." UW-Eau Claire Student Research Day—Poster Session 22-23 April 2002.

Groeschl, Trisha, graduate student. See William Frankenberger, same department.

Irwin, Melissa, undergraduate student. See William Frankenberger, same department.

KINESIOLOGY AND ATHLETICS

Dr. Marilyn Skrivseth, Department Chair
219 McPhee Physical Education Center
715/836-2546

Bredle, Don. See Darren Faherty, same department.

Bulger, Sean. "Aerobic and Anaerobic Exercise." *The School News* 6.7 (2002): 18.

—, with **Derek Mohr,** Appalachian State University, **Linda Carson** and **Robert Wiegand,** West Virginia University. "Infusing Health-Related Physical Fitness in Physical Education Teacher Education." *Quest* 53 (2001): 403-417.

—, with **Derek Mohr** and **J. Scott Townsend,** Appalachian State University, and **Robert Wiegand,** West Virginia University. "Teacher Education and Performance Based Evaluation." 2002 AAHPERD National Convention, San Diego, CA, 9 April 2002. *Conference Proceedings.* 164.

—, with **Derek Mohr,** Appalachian State University, and **Richard Walls,** West Virginia University. "Stack the Deck in Favor of Your Students Using the Four Aces of Effective Teaching." *Effective Teaching* (Online) 5.2 (2002): 1-7. <<http://cte.uncwil.edu/et/articles.htm>>.

—, with **Derek Mohr** and **J. Scott Townsend,** Appalachian State University. "A Pedagogical Approach to Sport Education Season Planning." *Journal of Physical Education, Recreation & Dance* 72.9 (2001): 37-46.

—, with **Derek Mohr** and **J. Scott Townsend,** Appalachian State University. "Maintaining the PASE: A Day in the Life of Sport Education." *Journal of Physical Education, Recreation & Dance* 73.1 (2002): 36-44.

—, with **J. Scott Townsend,** Appalachian State University, and **Linda Carson,** West Virginia University. "Promoting Responsible Student Decision-Making in Elementary Physical Education." *Journal of Physical Education, Recreation & Dance* 72.7 (2001): 18-23.

—. "Selecting an Exercise Facility." *The School News* 6.3 (Oct. 2001): 19.

Faherty, Darren, undergraduate student, with **Don Bredle**, same department. "Associating Pulmonary Functions with Smoking and Exercise Habits Over Four College Years." UW-Eau Claire Student Research Day—Poster Session 22-23 April 2002.

Huntington, Leslie. "Exercises at Work." *The School News* Nov. 2002.

La Rue, Mary, ed. *Wellness: Concepts and Applications*. By Anspaugh, Hamrick, & Rosato. New York: McGraw Hill, 2002.

Mc Intyre, Lisa. See William Harms, Student Services.

Oliphant, Jeff. "Anterior Cruciate Ligament Tears: The Ins and Outs of this Feared Knee Injury." *Personal Fitness Professional* 3.12 (Dec. 2001): 21-25.

—. "Cold Weather Exercise: A Preventative Rx for Winter Athletes." *Men's Total Health Digest* 1.1 (Nov. 2001): 9-10.

—. "Eliminate Unwanted Stress: Recognizing and Preventing Stress Fractures." *Personal Fitness Professional* 3.10 (Oct. 2001): 38-41.

—. "Learn to Skate and Have Fun!" *The School News* 5.5 (May 2001): 18.

—. "Small Parts But a Big Pain: Recognizing and Treating Toe Injuries." *Personal Fitness Professional* 3.8 (Aug. 2001): 30-32.

—. "Riding Smart: Recognizing and Preventing Common Cycling Injuries." *Personal Fitness Professional* 3.6 (June 2001): 24-27.

—. "The Importance of Stretching." *The School News* 6.1 (Aug. 2001): 18.

Poll-Sorensen, Toni. See Christy Carello, Biology.

LIBRARY SERVICES

Mr. Robert Rose, Director
3005 Library
715/836-3715

Bogstad, Janice. "Forecasts: Angelmass." Rev. of *Angelmass* by Timothy Zahn. *Publisher's Weekly* 1 Oct. 2001: 60.

—. "Forecasts: In The Country of the Blind." Rev. of *In the Country of the Blind* by Michael Flynn. *Publisher's Weekly* 23 July 2001: 45.

—. "Forecasts: Manifold: Origin." Rev. of *Manifold: Origin* by Stephen Baxter. *Publisher's Weekly* 29 Jan. 2002: 51.

—. "Forecasts: Permanence." Rev. of *Permanence, TOR, May, 2002* by Karl Schroeder. *Publisher's Weekly*, 249.15 (15 April 2002): 46.

—. "Forecasts: The Watch." Rev. of *The Watch* by D. Danvers. *Publisher's Weekly* 24 Dec. 2001: 47-48.

—. "Phillip Pullman and The Golden Compass." *Beachum's Guide to Literature for Young Adults, V. 13*. Ed. Pam Revitzer. New York: Gale, 2001. 163-177.

—. "Rising Above Constraints." Rev. of *Ray Bradbury: A Critical Companion* by Robin Reid. *Science Fiction Studies* 29.1 (2002): 125-127.

—. Rev. of *Speaking Science Fiction* by Eds. D. Seed and Andy Sawyer. *Newsletter of the Association for Research in Popular Fictions* 13 (Oct. 2001): 19-21.

Markgraf, Jill. "Collaboration with Faculty: One Size Does Not Fit All." *Tenth Off-Campus Library Services Conference Proceedings*. Ed. Patrick B. Mahoney. Cincinnati, OH, 17 April 2002. Mount Pleasant, MI: Central Michigan University, 2002. 351-360.

MANAGEMENT AND MARKETING

Dr. Robert Sutton, Department Chair
400 Schneider Social Science
715/836-3677

Bergmann, Thomas, with **Dale Johnson**, same department, and **Stephanie Carlson**, undergraduate student, same department. "Assessment of Electronic Focus Groups to Evaluate College of Business Core Curriculum." UW-Eau Claire Student Research Day—Poster Session 22-23 April 2002, Faculty/Student Research Collaborative Project.

—, with **Dmitry A. Yarushkin**, graduate student, same department. "Comparative Analysis of Pension Plans in Western European Countries, Russia and the U. S. with Emphasis on Trends for Future Development of Russian Pension System." *Public Administration and*

Management: An Interactive Journal 6.1 (2001): 15-62. <pamij.com/>.

Carlson, Stephanie, undergraduate student. See Thomas Bergmann, same department.

Flunker, La Nette. See Chuck Tomkovick and Rama Yelkur, same department.

Hostager, Todd. See Kathryn Ready, same department.

Johnson, Dale. See Thomas Bergmann, same department.

Lester, Scott, with **Bill Turnley** and **Jim Bloodgood**, Kansas State University, and **Mark Bolino**, Notre Dame University. "Not Seeing Eye to Eye: Differences in Supervisor and Subordinate Perceptions of and Attributions for Psychological Contract Breach." *Journal of Organizational Behavior* 23 (2002): 39-56.

—, with **Bruce Meglino** and **Audrey Korsgaard**, University of South Carolina. "The Antecedents and Consequences of Group Potency: A Longitudinal Investigation of Newly Formed Groups." *Academy of Management Journal* 45 (2002): 352-368.

—, with **Bruce Meglino** and **Audrey Korsgaard**, University of South Carolina. "Are Good Soldiers Also Rational? The Effect of Self-interest on the Development of Citizenship Behavior Among New Employees." *2001 Southern Management Association Conference Proceedings*, New Orleans, LA, Nov. 2001. 230-236.

—, with **Jill Kickul**, DePaul University. "Promises Made, Promises Broken: Equity Sensitivity as a Moderator Between Psychological Contract Breach and Employee Attitudes and Behavior." *Journal of Business and Psychology* 16 (2001): 191-217.

—, with **Jill Kickul**, DePaul University. "Has My Organization Betrayed Me?: A Cognitive Processing Model of Perceived Violations of Fairness." *2001 Southern Management Association Conference Proceedings*, New Orleans, LA, Nov. 2001. 249-255.

—, with **Jon Werner**, University of Wisconsin – Whitewater. "Applying a Team Effectiveness Framework to the Performance of Student Case Teams." *Human Resource Development Quarterly* 12 (2001): 385-402.

—. See Kathryn Ready, same department.

Nahm, Abraham, with **Luis E. Solis-Garvan**, Instituto de Empresa, **S. Subba Rao** and **T. S. Ragu-Nathan**, University of Toledo. "The Q-Sort Method: Assessing Reliability and Construct Validity of Questionnaire Items at a Pre-Testing Stage." *Journal of Modern Applied Statistical Methods* 1.1 (2002): 114-125.

—, with **Mark Vonderembse**, University of Toledo, and **Xenophon Koufteros**, Florida Atlantic University. "The Impact of Organizational Structure on Time-Based Manufacturing: An Empirical Study." *The 2001 Annual Meeting of the Decision Sciences Institute*. San Francisco, CA, Nov. 2001. San Francisco: DSI, 2001. 773-775.

—, with **Paul Hong** and **William Doll**, University of Toledo. "Knowledge Sharing in Integrated Product Development." *Third European Conference on Organizational Knowledge, Learning and Capabilities*. Athens, Greece, April 2002. Athens: Athens Laboratory of Business Administration, 2002. 1-32. <http://www.alba.edu.gr/OKLC2002/Proceedings/pdf_files/ID85.pdf>.

Pathos, James N. See Rama Yelkur, same department.

Ready, Kathryn, with **Casey Strauch**, undergraduate student, same department. "An Analysis of the Korean Business Environment and Cultural Differences: A Survey of Korean Americans and Caucasian American Experienced in Korean Business." Faculty/Student Research Collaborative Project.

—, with **Scott Lester** and **Todd Hostager**, same department, and **Marilyn Bergmann**, College of Business. "An Examination of the Effects of Facilitator Style and Participant Mood on Group Productivity, Group Intentions and Member Satisfaction in a Group Systems Environment." *International Business Education and Technology Conference Program & Proceedings*, Cancun, Mexico, 15-21 Mar. 2001. CD Rom.

—. "Strategic Considerations in the Motorcoach Industry." *International Applied Business Research Conference Program & Proceedings*, Puerto Vallarta, Mexico, 14-19 Mar. 2002. CD Rom, Article 217.

Strauch, Casey, undergraduate student. See Kathryn Ready, same department.

Tomkovick, Chuck, with **La Nette Flunker** and **Rama Yelkur**, same department. "Privacy,

Personalization, and Positioning on the Internet: An Analysis of Fortune 500 Companies.” *Finding Your Place in the Market Niche by Niche*. Eds. Robert D. Green, Michelle B. Kinz and Robert Erffmeyer. Proceedings of the 2002 Marketing Management Association, Chicago, IL, 27 Feb. - 1 March 2002. 84-88.

—, with **Patty Traczyk**, undergraduate student, same department, and **Rama Yelkur**, same department. “Three Market Drivers of the Super Bowl’s Growing Popularity.” *Integrated Marketing For the Future*, the 2001 Proceedings of the Atlantic Marketing Association Seventeenth Annual Conference. Ed. Jerry W. Wilson. Georgia Southern University, GA, 26-29 Sept. 2001. 296-305.

—, with **Rama Yelkur**, same department, and **Patty Traczyk**, undergraduate student, same department. “A Longitudinal Analysis of Super Bowl Advertising Effectiveness.” Summer Research Experiences for Undergraduates Grant.

— . See Rama Yelkur, same department.

Traczyk, Patty, undergraduate student. See Chuck Tomkovick, same department.

Yarushkin, Dmitry A., graduate student. See Thomas Bergmann, same department.

Yelkur, Rama. “A Cross-Cultural Comparison of Generation X Consumers in the U.S. and France.” *Global Business Trends: Contemporary Readings*, 2002 edition. Eds. David Moore and Sam Fullerton. Conference proceedings of the Academy of Business Administration, 31-36.

—, with **Chuck Tomkovick**, and **La Nette Flunker**, same department. “Corporate America’s Web Marketing Presence: An Analysis of Fortune 500 Home Pages.” *Marketing Advances in Pedagogy, Process, and Philosophy*, proceedings of the Annual Meeting of the Society for Marketing Advances. Ed. Tracy Suter. New Orleans, LA, Nov. 2001. 25-29.

— . “Generation X: A Cross-National Comparison of Buyer Behavior.” *Enhancing Knowledge Development in Marketing, Vol 12*, proceedings of the American Marketing Association Conference. Eds. Greg W. Marshall and Stephen J. Grove. Washington, DC, 5-8 Aug. 2001. 6-7. *The Journal of Euromarketing* 12.1 (2002): 5-18.

—, with **James N. Pathos**, same department. “E-tailing Versus Retailing: The Impact of the Internet on Consumer Marketing.” *Global Business Trends: Contemporary Readings*, 2001 edition, conference proceedings of the Academy of Business Administration. Eds. David Moore and Sam Fullerton. 2001. 104-110.

—, with **Maria DaCosta**, Economics. “A Cross-National Comparison of Web Presence Strategies: An Analysis of the Hotel Industry in the United States and Japan.” *Proceedings of the Fourth Annual Business & Economics Conference*. Ed. Iris Jenkel. St. Norbert College, De Pere, WI, 11-12 Oct. 2001. 132-144.

—, with **Maria DaCosta**, Economics. “An International Comparison of Electronic Presence: The Case of the Hotel Industry.” *Journal of E-Business*, 1.2 (2001): 1-17.

—, with **Maria DaCosta**, Economics, **Soumava Bandyopadhyay**, Lamar University, and **Francisco Coelho**, Instituto Portugues Administracao de Marketing. “Product Country-of-Origin: Perceptions of Portuguese Consumers.” *Revista Portuguesa de Marketing* 6.12 (2002): 47-53.

—, with **Soumava Bandyopadhyay**, Lamar University, **Maria DaCosta**, Economics, and **Francisco Coelho**, Instituto Portugues Administracao de Marketing. “Product Country-of-Origin Perceptions of Portuguese Consumers.” *Enhancing Knowledge Development in Marketing Vol 12*, proceedings of the American Marketing Association Conference. Eds. Greg W. Marshall and Stephen J. Grove. Washington, DC, 5-8 Aug. 2001. 131-132.

— . See Chuck Tomkovick, same department and Maria DaCosta, Economics.

MATHEMATICS

Dr. Thomas Wineinger, Department Chair
508 Hibbard Humanities Hall
715/836-3301

Anderson, Stephanie, undergraduate student. See Shyam Chadha, same department.

Awe, Thomas, undergraduate student. See Mohamed Elgindi, same department.

Balas, Andrew, with **Claudia Giamati**, same department. “Professionals Investigating Experiential Curriculum in an Exploratory Setting (PIECES).” Extramural Grant. U.S. Department of Education. \$38,200.

Barth, Bradley, undergraduate student. See Marc Goulet, same department.

Bodin, Derek, undergraduate student. See Michael Penkava, same department.

Buck, Leon, undergraduate student. See Marc Goulet, same department and Paul Thomas, Physics and Astronomy.

Chadha, Shyam, with **Stephanie Anderson**, undergraduate student, same department. “On the Numerical Computation of Some Useful Matrices.” UW-Eau Claire Student Research Day—Poster Session 22-23 April 2002, Summer Research Experiences for Undergraduates Grant.

Cox, Jennifer, undergraduate student. See Michael Penkava, same department.

Elgindi, Mohamed, with **Robert Langer** and **James Walker**, same department, and **Chong Hoong Leong**, undergraduate student, same department. “On the Temperature Profile of Polymer Flow Through Circular Pipe.” UW-Eau Claire Student Research Day—Poster Session 22-23 April 2002.

—, with **Thomas Awe**, undergraduate student, same department. “Internal Design of Uniform Shear Rate Extrusion Dies.” UW-Eau Claire Student Research Day—Poster Session 22-23 April 2002.

—, See Robert Langer, same department.

Giamati, Claudia. See Andrew Balas, same department.

Goulet, Marc, with **Alex Smith**, same department, **Theodore Jaeger**, **Leon Buck**, and **Bradley Barth**, undergraduate students, same department. “A Two-Dimensional Model for the Re-Freezing of the Ice Sheet on Europa After a Melt-Through Event.” UW-Eau Claire Student Research Day—Poster Session 22-23 April 2002.

—, See Paul Thomas, Physics and Astronomy.

Hopp, Carolyn. “Program Evaluation Using Qualitative Analysis Techniques.” Extramural Grant. National Science Foundation. \$24,759.

Hutchinson, Rebecca, undergraduate student. See Robert Langer, same department.

Jaeger, Theodore, undergraduate student. See Marc Goulet, same department.

Langer, Robert, with **Mohamed Elgindi**, same department and **Rebecca Hutchinson**, undergraduate student, same department. “Pressure and Temperature Balance for Non-Newtonian Flow Through a Rectangular Tube.” UW-Eau Claire Student Research Day—Poster Session 22-23 April 2002.

—, See Mohamed Elgindi, same department.

Leong, Chong Hoong, undergraduate student. See Mohamed Elgindi, same department.

Penkava, Michael. “Deformation Theory of Infinity Algebras.” *The Journal of Algebra* 255 (2002): 59-88.

—, with **Derek Bodin**, undergraduate student, same department. “Calculation of Cocycles in Infinity Algebras.” UW-Eau Claire Student Research Day—Poster Session 22-23 April 2002, Faculty/Student Research Collaborative Project.

—, “Examples of Infinity and Lie Algebras and their Versal Deformations.” *Geometry and Analysis on Lie Groups* 55 (2002): 27-42.

—, with **Jennifer Cox**, undergraduate student, same department. “Infinity Algebras and Deformation Theory.” UW-Eau Claire Student Research Day—Poster Session 22-23 April 2002, Summer Research Experiences for Undergraduates Grant.

—, “RUI: Versal Deformations, Deformation Quantization, Moduli Spaces & Graph Complex.” Extramural Grant. National Science Foundation. \$47,452.

—, “U.S.-Hungary Math Research on Cohomology & Deformations of Infinity & Lie Algebras.” Extramural Grant. National Science Foundation. \$9,800.

Smith, Alex. See Marc Goulet, same department and Paul Thomas, Physics and Astronomy.

Sparks, Billie. “System Wide Standards Based Reform of a K-12 Mathematics Program.” Extramural Grant. U.S. Department of Education. \$78,115.

Walker, James. “Fourier Series.” *Encyclopedia of Physical Science and Technology*. Ed. Joseph Kung. New York: Academic Press, 2002. 167-183.

—, with **Truong Q. Nguyen**, ECE Department, Univ. of California-San Diego. “Image Compression for Unmanned Underwater Vehicles.” Extramural Grant. Office of Naval Research. \$13,000.

—. “New Methods in Wavelet-Based Image Denoising.” 3rd International Congress of the International Society for Analysis and its Applications and Computation, Berlin, Germany, 22-25 Aug. 2001. *Conference proceedings abstract*. 55.

—. See Mohamed Elgindi, same department.

MUSIC AND THEATRE ARTS

Dr. David Baker, Department Chair
156 Haas Fine Arts Center
715/836-4954

Allen, Terry, with **Jody Gross**, undergraduate student, same department. “Death, the Maiden, and Amnesty International.” Summer Research Experiences for Undergraduates Grant.

Don, Gary. “Brilliant Colors Provocatively Mixed: Overtone Structures in the Music of Debussy.” *Music Theory Spectrum* 23 (2001): 61-73.

—. See Amanda Potts, same department.

French, Andrew Mykle, undergraduate student. See Donald Patterson, same department.

Gallagher, Joshua Patrick, undergraduate student. See Donald Patterson, same department.

Gross, Jody, undergraduate student. See Terry Allen, same department.

Holte, Dawn, undergraduate student. See Jerry Young, same department.

Kosower, Paul, organ. “AGO Halloween Concert.” *Prelude and Fugue on BACH* by Franz Liszt. Gantner Concert Hall, UW-Eau Claire. 26 Oct. 2001.

—, cello. “Cello Soloist with the Mississippi Valley Symphony Orchestra.” *Concerto in C Major* by Joseph Haydn. First Lutheran Church, Columbia Heights, MN. 11 Nov. 2001.

—, organ. “Faculty Organ Recital.” *Choral Op. 37, No. 4* by Joseph Jongen, *Andante* from *Concerto in F* by G. F. Handel, *More Love to Thee, O Christ* by Albert L. Travis, *Prelude and Fugue in G minor* by Nicolaus Bruhns, *Air from Suite in D* by J. S. Bach, *Prelude and Fugue in D Major* by J. S. Bach, and *Six Fugues on the Name of Bach, Op. 60* by Robert Schumann. Gantner Concert Hall, UW-Eau Claire. 16 Sept. 2001.

—, organ. “Faculty Organ Recital.” *Introduction and Toccata in G Major* by William Walond, *Passion Chorale* by Max Reger, *Prelude and Fugue in A Minor* by J. S. Bach, *Priere, Op. 37, No. 3* by Joseph Jongen, *Chorale No. 3 in A Minor* by Cesar Franck, *Behold a Host* by John Ferguson, and *The Star Spangled Banner Concert Variations* by Dudley Buck. Gantner Concert Hall, UW-Eau Claire. 14 April 2002.

—, cello. “Faculty Cello Recital.” *Suite No. 3, BWV 1009 in C Major for Violoncello Solo* by J. S. Bach, *Suite per Violoncello* by Caspar Cassado, and *Suite for Cello, Op. 72* by Benjamin Britten. Gantner Concert Hall, UW-Eau Claire. 7 Oct. 2001.

—, organ. “Holiday Concerts.” *From Heaven Above to Earth I Come* by Walter Peltz, *Toccata from Symphony No. 5* by Charles Widor, and *Personent Hodie* by Lara Hoggard. Zorn Arena, UW- Eau Claire. 9 Dec. 2001.

—, cello, with **Jee-Won Oh**, piano, New York. “Courtroom Series - Schubert Club.” *Sonata No. 1 in E minor, Op. 38* by Johannes Brahms. Landmark Center, St. Paul, MN. 3 Feb. 2002.

—, cello, with **Jee-Won Oh**, piano, New York. “Music at Hennepin.” *Impromptu No. 3 in G Major, D. 899* by Franz Schubert, *Sonata in F Major for Violoncello and Piano, Op. 6* by Richard Strauss, *Sonata No. 4 in C Major, Op. 102, No. 1* by Ludwig van Beethoven, and *Sonata No. 1 in E minor, Op. 38* by Johannes Brahms. Hennepin Methodist Church, Minneapolis, MN. 20 Jan. 2002.

—, cello, with **Jee-Won Oh**, piano, New York. “Music at Longfellow School.” *Bourree I from Suite in C Major, BWV 1009* by J. S. Bach, *Minuet in G Major* by Ludwig van Beethoven, *The Swan* by Camille Saint-Saens, *Tango* by Isaac Albeniz, *Cavatina* by Joachim Raff, *Allegro Appassionato, Op. 43* by Camille Saint-

Saens, and *Spinning Song from Song Without words, Op. 62* by Felix Mendelssohn. Longfellow School, Eau Claire, WI. 1 Feb. 2002.

—, cello, with **Jee-Won Oh**, piano, New York. “Performing Arts Season at the Mabel Tainter Theater.” *Impromptu No. 3 in G Major, D. 899* by Franz Schubert, *Sonata for Cello and Piano in F Major, Op. 6* by Richard Strauss, *Sonata No. 4 in C Major, Op. 102, No. 1* by Ludwig van Beethoven, and *Sonata No. 1 in E Minor, Opus 38* by Johannes Brahms. Mabel Tainter Theater, Menomonie, WI. 10 Feb. 2002.

—, cello, with **Paula Kosower**, cello, Chicago, and **Jee-Won Oh**, piano, New York. “Sunday Afternoon Live from the Elvehjem - Wisconsin Public Radio.” *Sonata No. 1 in E minor, Op. 38* by Johannes Brahms, *Concerto for Two Cellos and Piano* by Antonio Vivaldi, and *Sonata No. 3 in A Major, Op. 69* by Ludwig van Beethoven. Elvehjem Museum of Art, Madison, WI. 3 Feb. 2002.

—, conductor. “University String Orchestra.” *Concerto No. 2 in F Major HWV 320* by George Friderick Handel, *Concerto in A Major for String Orchestra* by Antonio Vivaldi, and *Orchestral Suite No. 2 in B minor, BWV 1067* by J. S. Bach. Gantner Concert Hall, UW-Eau Claire. 28 Oct. 2001.

—, conductor. “University Chamber Orchestra Concert.” *Chrysanthemum* by Giacomo Puccini, *Five Pieces for String Orchestra* by Paul Hindemith, and *Op. 44, Dardanus Suite* by Jean-Phillippe Rameau. Gantner Concert Hall, UW-Eau Claire. 17 March 2002.

—, organ. “Wednesday Lenten Concerts at Gethsemane.” *Introduction and Toccata in G Major* by William Walond, *Two Chorale Preludes on Herzlich tut mich verlangen* by Johannes Brahms and Max Reger, *Behold a Host from Three Norwegian Folk Hymn Preludes* by John Ferguson, and *Prelude and Fugue in A Minor* by J. S. Bach. Gethsemane Episcopal Church, Minneapolis, MN. 27 Feb. 2002.

McGinnis, Mark, undergraduate student, performer. “Sophomore Recital.” *Sonata 1 in F* by Marcello, *Concerto for Bass Tuba* by R. Vaughan-Williams, and *Danny Boy* arranged by Sheridan. Phillips Recital Hall, UW-Eau Claire. 22 April 2002.

Murphy, Vanessa, with **Susan Tarnowski**, College of St. Scholastica. “A Pilot Study of Retention, Retraining and Revitalization Among Elementary Music Teachers in Wisconsin and Minnesota.” National Association for

Music Education, Biennial Conference for the Music Educators National Convention, Nashville, TN—Poster Presentation. 12 April 2002. <www.uwosh.edu/departments/music/wmea/research/murphytarnowski_abs01.html>.

—, with **Susan Tarnowski**, College of St. Scholastica. “Multidisciplinary Jazz Lessons for Young Learners.” *Teaching Music* 9.2 (2001): 38-43.

Nimke, Richard, director. “Brigadoon.” *Brigadoon*, music by Frederick Loewe, Lyrics and book by Alan Jay Lerner. Theatre L’homme Dieu, Alexandria, MN, 13-24 June 2001.

—, with **Erin Conery**, undergraduate student, English, and **Robert Vanderloop**, undergraduate student, same department. “Freeing the Physical and Emotional Imagination.” Wisconsin High School Theatre Festival, Stevens Point, WI—Oral Presentation. 15-17 Nov. 2001.

Patterson, Donald, with **Andrew Mykle French**, undergraduate student, same department. “A Thorough Exploration of George Gershwin’s Rhapsody in Blue” Spring 2002.

—, with **Andrew Mykle French**, undergraduate student, same department, piano. “Wind Symphony Concert.” *Rhapsody in Blue* by George Gershwin. Gantner Concert Hall, UW-Eau Claire. 28 April 2002.

—. Rev. of *Early Keyboard Instruments: A Practical Guide* by David Rowland. *Choice* 39.3 (Nov. 2001): 521-522.

—, piano. “Faculty Piano Recital.” Works of Soler, Beethoven, Schubert, and Persichetti. Gantner Concert Hall, UW-Eau Claire, 17 Feb. 2002.

—. Rev. of *Giraffes, Black Dragons, and Other Pianos* by Edwin M. Good. *Choice* 39.2 (Oct. 2001): 319-320.

—, with **Joshua Patrick Gallagher**, undergraduate student, same department, piano. “Winter Band Concert.” *Rhapsody in Blue* by George Gershwin. Memorial High School, Eau Claire, WI. 11 Feb. 2002.

—. “Wisconsin Federation of Music Clubs Junior Festival.” Eau Claire, WI. 24 Feb. 2002.

Peters, Gretchen, with **Hannah Zimmer**, undergraduate student, same department. “The Role of Women in Music at Powwows in Select Wisconsin

Communities.” Faculty/Student Research Collaborative Project.

Potts, Amanda, undergraduate student, with **Gary Don**, same department. “The Application of Fractal Geometry to Sound Synthesis.” UW-Eau Claire Student Research Day—Poster Session 22-23 April 2002, Faculty/Student Research Collaborative Project, Sixteenth National Conference on Undergraduate Research. Whitewater, WI, 25-27 April 2002. *Abstract Book*. Whitewater, WI: University of Wisconsin, 2002. 214.

Rosen, Paul, with **Jerry Young**, same department. “Senior Recital.” Independent Study. Concert Presentation. Fall 2001.

— See Jerry Young, same department.

Specht, Jeffrey, undergraduate student. See Jerry Young, same department.

Vanderloop, Robert, undergraduate student. See Richard Nimke, same department.

Young, Barbara. See Jerry Young, same department.

Young, Jerry, performer, with **Barbara Young**, same department. “Celebration Music Series VII.” *The Morning Song* by Kellaway. First Presbyterian Church, Chippewa Falls, WI. 3 March 2002.

—, performer, with **Barbara Young**, same department. “Faculty Recital.” *Concerto for Tuba* by Ewazen, *Serenade* by Romberg/Sheridan, *Reflected Projections* by Wroblewski (Wisconsin Premiere), *Sultry and Eccentric* by Grant (World Premiere), and *The Carnival’s Over* by B. Young. Gantner Concert Hall, UW-Eau Claire. 30 Sept. 2001.

—, conductor. “BASSically BRASS.” *Adagio* by Barber/arr. Stevens, *Uluru* by Fritze (Wisconsin Premiere), *Power and Glory* by Sousa/Knoener, *BASSically BRASS Rag* by Knoener (World Premiere), and *Concert Suite for Low Brass* by Smith. Gantner Concert Hall, UW-Eau Claire. 6 Dec. 2001.

—, performer, with **Dawn Holte**, **Paul Rosen**, and **Jeffrey Specht**, undergraduate students, same department. “Eu-Tu(ba) (Euphonium/Tuba Quartet - faculty/student collaboration).” *Achieved is the Glorious Work* by Haydn/Forbes, *Canzone per Sonare No. 4* by Gabrieli/Gray, *Chaconne* by Cunningham, *A Nightingale Sang in Berkley Square* by Sherwin/

Funderburk, *Celestial Suite* by Bulla, *Amazing Grace* by traditional/Uber, and *Barnum and Bailey’s Favorite* by Kin. Phillips Recital Hall, UW-Eau Claire. 3 Feb. 2002.

— “International Euphonium Artist Solo Competition.” Lahti, Finland. Aug. 2001.

— “ITEC 2001: Being Cool in Lahti.” *The ITEA Journal* 29.1 (2001): 41-72. <www.iteaonline.org>.

— “ITEC 2001.” *New Zealand Mouthpiece* 47.8 (Sept. 2001): 6.

— “Low Brass Hits High Spot at ITEC.” *The British Bandsman* edition 5161 (Sept. 2001): 5.

— *The T.U.B.A. Journal*. Eau Claire, WI: Eau Claire Leader Printing 28.1-4 (2000-2001): <www.iteaonline.org>.

— *The ITEA Journal*. Eau Claire, WI: Eau Claire Leader Printing 29.1-4 (2001-2002): <www.iteaonline.org>.

— Rev. of Velvet Compact Disc Recording by Velvet Brown. *National Association of Wind and Percussion Instructors Journal* 49.2 (2001): 47-48.

— See Paul Rosen, same department.

Zimmer, Hannah, undergraduate student. See Gretchen Peters, same department.

NURSING SYSTEMS

Dr. Mary Zwygart-Stauffacher, Department Chair
264 School of Nursing
715/836-5837

Bowlds, Tara, undergraduate student. See Lois Taft, same department.

Bruss, Leslie, undergraduate student. See M. Cecilia Wendler, same department.

Grorich, Sean, undergraduate student. See M. Cecilia Wendler, same department.

Loertscher, Sara, undergraduate student. See M. Cecilia Wendler, same department.

Platt, Jennifer, undergraduate student. See Lois Taft, same department.

Stolder, Mary Ellen. See Lois Taft, same department.

Taft, Lois, with **Mary Ellen Stolder**, same department, **Karolyn Tamke**, **Jennifer Platt**, and **Tara Bowlds**, undergraduate students, same department. "Oral History Project: Memories of World War II." UW-Eau Claire Student Research Day—Poster Session 22-23 April 2002, Faculty/Student Research Collaborative Project.

Tamke, Karolyn, undergraduate student. See Lois Taft, same department.

Wendler, M. Cecilia. "Exploring the Boundaries of Caring: Is Tellington Touch Nursing?" *Journal for Human Caring* 4.1 (2000): 29-34.

—, with **Sean Grorich**, and **Leslie Bruss**, undergraduate students, same department. "The Relationship Between Food, Caffeine, and Nicotine Use and Hours of Sleep" and "State Anxiety in Students Facing an Important University Examination." UW-Eau Claire Student Research Day—Poster Session 22-23 April 2002.

—, with **Sean Grorich**, and **Sara Loertscher**, undergraduate students, same department. "Undimensional Tools to Measure Clinical Phenomena: Data Collection and Analysis." Faculty/Student Research Collaborative Project.

—. "Triangulation Using a Meta-Matrix." *Journal of Advanced Nursing* 35.4 (2001): 521-525.

Zwygart-Stauffacher, Mary, with **Marilyn Rantz** and **Lori Popejoy**, University of Missouri-Columbia. *The New Nursing Homes: A 20-Minute Way to Find Great Long-Term Care*. Minneapolis, Minn: Fairview Press, 2001.

—. See Douglas Olson, Allied Health Professions.

PHILOSOPHY AND RELIGIOUS STUDIES

Dr. James Brummer, Department Chair
632 Hibbard Humanities Hall
715/836-2545

Akiba, Ken. "A Deflationist Approach to Indeterminacy and Vagueness." *Philosophical Studies* 107.1 (2002): 69-86.

—. Rev. of *Indeterminate Identity* by Terence Parsons. *Philosophical Quarterly* 52 (April 2002): 262-5.

—. "Logic as Instrument: The Millian View on the Role of Logic." *History and Philosophy of Logic* 17 (1996): 73-83. *The General Philosophy of John Stuart Mill*. Ed. Victor Sanchez-Valencia. Ashgate, 2002. 313-23.

Burns, Charlene. *Divine Becoming: Rethinking Jesus and Incarnation*. Minneapolis: Fortress Press, 2002. <www.fortresspress.org>.

Greider, Brett, with **Justin Lehmann** and **Sara Jensen**, undergraduate students, same department. "Mayan Indigenous Identity in an Age of Globalization." UW-Eau Claire Student Research Day—Poster Session 22-23 April 2002.

—, with **Sara Jensen** and **Justin Lehmann**, undergraduate students, same department. "Collaborative Research for Religion and Mayan Revitalization Project." Faculty/Student Research Collaborative Project.

Jensen, Sara, undergraduate student. See Brett Greider, same department.

Lehmann, Justin, undergraduate student. See Brett Greider, same department.

Lind, Olaf, undergraduate student. See Lori Rowlett, same department.

Rowlett, Lori, with **Olaf Lind**, undergraduate student, same department. "Human Sacrifice and Transference: Linking Frazer, Freud, and Bataille." UW-Eau Claire Student Research Day—Poster Session 22-23 April 2002.

—, with **Olaf Lind**, undergraduate student, same department. "Theories of Ritual: The Socio-Political Dimension." Summer Research Experiences for Undergraduates Grant.

PHYSICS AND ASTRONOMY

Dr. Paul Thomas, Department Chair—Sem I
Dr. J. Erik Hendrickson, Department Chair—Sem II
 231 Phillips Science Hall
 715/836-3148

Awe, Thomas, undergraduate student. See Matthew Evans, same department.

Barka, Casey, undergraduate student. See Douglas Dunham, same department.

Dunham, Douglas, with **Matthew Evans**, same department, **Marc Mc Ellistrem**, Chemistry, and **Kim Pierson**, same department. “Acquisition of an X-Ray Photoelectron Spectroscopy System for Materials Science Research and Undergraduate Education.” Extramural Grant. National Science Foundation. \$203,614.

—, with **Casey Barka**, undergraduate student, same department. “Photoemission Microscopy of Gadolinium and Boron in Cells for Application in Neutron Capture Therapy.” Summer Research Experiences for Undergraduates Grant.

—, with **Casey Barka** and **Sandra Mehlberg** undergraduate students, same department. “Photoemission Studies of Materials.” Faculty/Student Research Collaborative Project.

Evans, Matthew, with **Stephanie Johnson**, undergraduate student, same department. “Morphological Studies of GaAs (001) c(4x4) Surface Reconstruction.” UW-Eau Claire Student Research Day—Poster Session 22-23 April 2002.

—, with **Stephanie Johnson** and **Thomas Awe**, undergraduate students, same department. “Scanning Tunneling Microscopy Studies of Co, Fe, and Er on GaAs.” Faculty/Student Research Collaborative Project.

—, See Douglas Dunham and Stephanie Johnson, same department.

Ford, Lyle. See Theodore Jaeger same department.

Jaeger, Theodore, with **Michael Weiss**, undergraduate student, same department, **Lyle Ford** and **George Stecher**, same department. “Determination of the Spin Axis Orientations of Asteroids.” UW-Eau Claire

Student Research Day—Poster Session 22-23 April 2002, Faculty/Student Research Collaborative Project.

Johnson, Stephanie, undergraduate student, with **Matthew Evans** same department, **Brian D. Schultz** and **Chris J. Palmström**, University of Minnesota and **Kathy Lüdge**, Institut für Festkörperphysik, Technische Universität Berlin. “Scanning Tunneling Microscopy Studies of GaAs.” Materials Research Science and Engineering Center (MRSEC) Summer Research Day—Contributed Talk. Minneapolis, MN, Aug. 2001.

—, undergraduate student. See Matthew Evans, same department.

Kollwitz, Jack, undergraduate student. See Kim Pierson, same department.

Leong, Chong Hoong, undergraduate student. See Andrew Swanson, same department.

Mehlberg, Sandra, undergraduate student. See Douglas Dunham, same department.

Myers, Anthony, undergraduate student. See Scott Whitfield, same department.

Peterson, John, undergraduate student. See Paul Thomas, same department.

Pierson, Kim, with **Jack Kollwitz**, undergraduate student, same department. “Low Temperature Epitaxial Deposition of Thin Silicon Films: Application for Semiconductor Industry.” UW-Eau Claire Student Research Day—Poster Session 22-23 April 2002, Faculty/Student Research Collaborative Project.

—, See Douglas Dunham, same department.

Stecher, George. See Theodore Jaeger, same department.

Swanson, Andrew, with **Chong Hoong Leong**, undergraduate student, same department. “Molecular Dynamics Simulation of Heteroepitaxial Cluster Behavior.” Summer Research Experiences for Undergraduates Grant.

—, with **Chong Hoong Leong**, undergraduate student, same department. “Non-Classical Decay of a Model Silicon Surface.” UW-Eau Claire Student Research Day—Poster Session 22-23 April 2002.

Thomas, Paul, with **John Peterson**, undergraduate student, same department. "Finite Element Modeling of the Coronae of Miranda." Faculty/Student Research Collaborative Project.

—, with **Leon Buck**, undergraduate student, Mathematics, **Christopher F. Chyba**, SETI Institute, and **Marc Goulet** and **Alex Smith**, Mathematics. "Persistence of Thin Ice Regions in Europa's Ice Crust." *Geophys. Res. Lett.* 29 (2002): 12-1.

Weiss, Michael, undergraduate student. See Theodore Jaeger, same department.

Whitfield, Scott, with **Anthony Myers**, undergraduate student, same department. "Angular Distribution Measurements of Open-Shell Atoms Using Photoelectron Spectrometry: 4s, 3d Subshells of Atomic Scandium." Summer Research Experiences for Undergraduates Grant.

—, with **Jose Jimenez-Mier**, National University of Mexico, **Ralf Wehlitz**, Synchrotron Radiation Center, and **Hector Diaz-Jimenez**, National University of Mexico. "Core Polarization Effects in the Decay of 1s to np (n=2-6) Resonantly Excited Beryllium." *Journal of Physics B: Atomic, Molecular and Optical Physics* 34 (2001): L693-L700.

—, with **Ken Kehoe**, alumnus, **Ralf Wehlitz**, Synchrotron Radiation Center, **Manfred Krause**, University of Central Florida, and **C. Denise Caldwell**, National Science Foundation. "Photoelectron Spectrometry of Atomic Scandium in the region of the 3p to 3d Giant Resonance." *Physical Review A* 64.022701 (2001): 1-12.

—, with **Ralf Wehlitz**, Synchrotron Radiation Center, **Manfred Krause**, University of Central Florida, and **Denise Caldwell**, National Science Foundation. "Analysis of the Atomic Fe 3d and 4s Partial Cross Sections in the Region of the 3p to 3d Giant Resonance." 13th International Conference on Vacuum Ultraviolet Radiation Physics, Trieste, Italy, 23-27 July 2001. *Program and Abstracts*. Th038.

—, with **Ralf Wehlitz**, Synchrotron Radiation Center. "Valence Double Photoionization of Beryllium." *Journal of Physics B: Atomic, Molecular and Optical Physics* 34 (2001): L719 - L725.

POLITICAL SCIENCE

Dr. Leonard Gambrell, Department Chair
200 Schneider Social Science
715/836-5744

Abotaleb, Ali, with **Christina Lorge** and **Lucas Swanepoel**, undergraduate students, same department. "Globalization and the State in Developing Countries." Faculty/Student Research Collaborative Project.

—, with **Lucas Swanepoel**, undergraduate student, same department. "The Affects of Globalization on Lesser Developed Nations in the Middle East." UW-Eau Claire Student Research Day—Poster Session 22-23 April 2002.

—. "State-Society Relations and Prospects for Democracy in Iran." *Middle East Review of International Affairs, MERIA* 5.3 (2001): 20-37.

Clark, Allyson, undergraduate student. See Geoff Peterson, same department.

Duerst, Lindsey, undergraduate student. See Geoff Peterson, same department.

Freitag, Rodd, with **Eric Winkler**, undergraduate student, same department. "The Impact of W-2 on Community Service Providers in Three Wisconsin Cities." UW-Eau Claire Student Research Day—Poster Session 22-23 April 2002, Faculty/Student Research Collaborative Project.

Gambrell, Leonard, with **Rafael Pumarejo Murphy**, undergraduate student, same department. "Beyond Realism: Complex Interdependence and Postinternationalism in William Gibson's Neuromancer." UW-Eau Claire Student Research Day—Poster Session 22-23 April 2002.

Johnson, James, undergraduate student. See Geoff Peterson, same department.

Koloen, Glory, undergraduate student. See Geoff Peterson, same department.

Majstorovic, Steven. "ISSUE 16: Were Ethnic Leaders Responsible for the Death of Yugoslavia?" *Taking Sides: Clashing Views on Controversial Issues in World History*. Eds. Joseph R. Mitchell and Helen Buss Mitchell, VOLUME II. Guilford, CT: McGraw-Hill/Dushkin, 2002.

—. “La Autonomía de lo Sagrado: El Final de la Partida en Kosovo.” *Identidad y Autogobierno en Sociedades Multiculturales*. (A Spanish language translation of an earlier published article on Kosovo in 2000.) Ramon Maiz coord. Barcelona: Ariel Ciencia Política, 2002. 239-265.

—. Rev. of *Knife* by Vuk Draskovic. *Choice* July 2001.

—. Rev. of *Modern Hatreds: The Symbolic Politics of Ethnic War* by Stuart J. Kaufman. *Choice* March 2002.

—. “Short Attention Spans and Glazed Eyes: Teaching World Politics in the University Trenches.” *International Studies Perspectives* 2.4 (2001): 451.

Murphy, Rafael Pumarejo, undergraduate student. See Leonard Gambrell, same department.

Licht, Benjamin, undergraduate student. See Geoff Peterson, same department.

Lorge, Christina, undergraduate student. See Ali Abootalebi, same department.

Peterson, Geoff, with **Allyson Clark**, undergraduate student, same department. “Too Far to the Bottom? Exploring the Phenomenon of Voter Rolloff.” Faculty/Student Research Collaborative Project.

—, with **Allyson Clark**, undergraduate student, same department. “American (Un)-Exceptionalism: A Methodological Re-Assessment.” Faculty/Student Research Collaborative Project presented at the Southwest Political Science Association meeting, New Orleans, LA, 18-21 March 2002.

—, with **Benjamin Licht**, undergraduate student, same department. “Transitions Towards Tolerance: The Changing Patterns of Public Opinion on Gay and Lesbian Issues.” UW-Eau Claire Student Research Day—Poster Session 22-23 April 2002.

—, with **Glory Koloen**, undergraduate student, same department. “Examining the Ventura Vote: A Test of Ecological Regression.” Faculty/Student Research Collaborative Project presented at the Southwest Political Science Association meeting, New Orleans, LA, 18-21 March 2002.

—, with **Glory Koloen** and **Lindsey Duerst**, undergraduate students, same department. “It May Be Funny, But Is It True? The Political Content of Late-Night Talk Show Monologues.” Faculty/Student

Research Collaborative Project presented at the American Political Science Association meeting, San Francisco, CA, 28 Aug.-3 Sept. 2001.

—, with **Melissa Gehring**, undergraduate student, History, and **James Johnson**, undergraduate student, same department. “Bets and Ballots: The Impact of Legalized Gambling on American Indian Politics.” Faculty/Student Research Collaborative Project presented at the American Political Science Association meeting, San Francisco, CA, 28 Aug.-3 Sept. 2001.

Swanepoel, Lucas, undergraduate student. See Ali Abootalebi, same department.

Tubbs, James, with **Susan Zukowski**, undergraduate student, same department. “Disparity Issues in Criminal Sentencing.” UW-Eau Claire Student Research Day—Poster Session 22-23 April 2002, Faculty/Student Research Collaborative Project.

Winkler, Eric, undergraduate student. See Rodd Freitag, same department.

Zukowski, Susan, undergraduate student. See James Tubbs, same department.

PSYCHOLOGY

Dr. Larry Morse, Department Chair
277 Hibbard Humanities Hall
715/836-5733

Alvarez, Elizabeth, undergraduate student. See Marie (Mickey) Crothers, same department.

Anderson, James, undergraduate student. See Gregory Madden, same department.

Arnold, Carla, undergraduate student. See Gregory Madden, same department.

Barutha, Kate, undergraduate student. See Gregory Madden, same department.

Bear, Alicia, undergraduate student. See Blaine Peden, same department.

Berkowitz, Sara, undergraduate student. See Lori Bica, same department.

Bica, Lori, with **Catherine Micale**, undergraduate student, same department. “Effect of Refutational

Teaching on College Students' Endorsements of Rape Myths." UW-Eau Claire Student Research Day—Poster Session 22-23 April 2002.

—, with **Laura Carter** and **Sara Berkowitz**, undergraduate students, same department. "Peer Death Experience." UW-Eau Claire Student Research Day—Poster Session 22-23 April 2002.

—, with **P. J. Kennedy**, Counseling Services, **Tamara Plath**, **Stefanie Wood**, **Alexis Dorsey**, and **Rebecca Reitmeier**, undergraduate students, same department. "Committee for the Prevention of Violence Against Women at the University of Wisconsin-Eau Claire: Sexual Assault on Campus: Incidence Rate and Correlates" and "Campus-Wide Sexual Assault Prevention Program." Faculty/Student Research Collaborative Project.

Boerner, Roury, and **Mark Bune**, undergraduate students, with **Blaine Peden**, same department. "The Influence of Caption and Picture Relevance on the Bizarre Imagery Effect." Sixteenth National Conference on Undergraduate Research. Whitewater, WI, 25-27 April 2002. *Abstract Book*. Whitewater, WI: University of Wisconsin, 2002. 414.

Bordenave, Jeffrey, undergraduate student. See Gregory Madden, same department.

Bune, Mark, undergraduate student. See Roury Boerner, same department.

Burns, Charles, undergraduate student. See Kathryn Hamilton and David Jewett, same department.

Cameron, Connie, undergraduate student. See Kevin Klatt, same department.

Carter, Laura, undergraduate student. See Lori Bica, same department.

Chrouser, Christina, undergraduate student. See David Jewett, same department.

Crothers, Marie (Mickey), with **Christine A. Gidycz**, Ohio University, **Julius A. Gyls**, University of Florida, **C. D. Jacobs**, **Melissa J. Layman**, **Abigail Matorin**, and **Cindy L. Rich**, Ohio University. "An Evaluation of an Acquaintance Rape Prevention Program: Impact on Attitudes and Sexual Aggression and Sexual Victimization." *Journal of Interpersonal Violence* 6.11 (2001): 1120-1138.

—, with **David H. Malin** and **J. R. Lake**, University of Houston-Clear Lake, **Pilar Goyarzu**, graduate student, University of Houston-Clear Lake, **R. E. Plotner**, **Sergio A. Garcia**, **Stacy H. Spell**, and **Beverly Tomsic**, University of Houston-Clear Lake, **J. Giordano**, Message Pharmaceutical, Inc., Malvern, PA, and **Neil W. Kowall**, Boston Children's Hospital. "Hippocampal Injections of Amyloid b-peptide 1-40 Impair Subsequent One-trial/day Reward Learning." *Neurobiology of Learning and Memory* 76 (2001): 125-137.

—, with **Heidi Thalacker**, undergraduate student, same department. "Immediate Reactions to Terrorist Attacks: Exploring for the Symptomatology of Acute Stress Disorder." UW-Eau Claire Student Research Day—Poster Session 22-23 April 2002.

—, with **Kathryn Hamilton**, undergraduate student, same department. "Is There a Relationship Between Participation in Sports and Levels of Depression Among College Students?" UW-Eau Claire Student Research Day—Poster Session 22-23 April 2002, Faculty/Student Research Collaborative Project.

—, with **Pamela Miller** and **Stefanie Wood**, undergraduate students, same department, and **Katherine S. Schneider**, Counseling Services. "Evaluation of a Pilot Mentoring Program for Psychologists with Disabilities." National Conference for Undergraduate Research. Lexington, KY. *Program: National Conference for Undergraduate Research*. 21 April 2001. 423.

—, with **Sheila Schmitz**, undergraduate student, same department, and **Elizabeth Alvarez**, undergraduate student, same department. "The Influence of Fear of AIDS on Sexual Behavior Among College Students." Midwestern Psychological Association, Chicago, IL, 3 May 2001. *Program: Seventy-Third Annual Meeting of the Midwestern Psychological Association*. 159.

Dake, Jamie, undergraduate student. See Gregory Madden, same department.

Dietz, Carly, undergraduate student. See Kathryn Hamilton and David Jewett, same department.

Dorsey, Alexis, undergraduate student. See Lori Bica, same department.

Dretzke, Beverly. *Statistics with Microsoft Excel, Second Edition*. Upper Saddle River, NJ: Prentice Hall, 2001.

Everson, Lorna, undergraduate student. See Kathryn Hamilton and David Jewett, same department.

Ferron, Molly, undergraduate student. See Gregory Madden, same department.

Flashinski, Doug, undergraduate student. See Chris Gade, Kathryn Hamilton, David Jewett and Blaine Peden, same department.

Gade, Chris and **Doug Flashinski**, undergraduate students, with **Blaine Peden**, same department. "Ethics of Behavioral Research on the Internet." UW-Eau Claire Student Research Day—Poster Session 22-23 April 2002. Sixteenth National Conference on Undergraduate Research. Whitewater, WI, 25-27 April 2002. *Abstract Book*. Whitewater, WI: University of Wisconsin, 2002. 420.

— See Blaine Peden, same department.

Giles, Megan and **Erin Guell**, undergraduate students, with **Blaine Peden**, same department. "Happiness in High School Dating Relationships." Sixteenth National Conference on Undergraduate Research. Whitewater, WI, 25-27 April 2002. *Abstract Book*. Whitewater, WI: University of Wisconsin, 2002. 423.

Gross, Jennifer, undergraduate student. See Gregory Madden, same department.

Guell, Erin, undergraduate student. See Megan Giles, same department.

Hamilton, Kathryn, Doug Flashinski, Derek Lee, Carly Dietz, Lorna Everson and **Charles Burns**, undergraduate students, with **David Jewett**, same department. "Central and Peripheral Mechanisms of Food Motivation." Sixteenth National Conference on Undergraduate Research. Whitewater, WI, 25-27 April 2002. *Abstract Book*. Whitewater, WI: University of Wisconsin, 2002. 424.

—, and **Jill Wahlstrom**, undergraduate student, with **Blaine Peden**, same department. "Nonverbal and Verbal Flirtation Cues: Do They Convey Romantic Interest." UW-Eau Claire Student Research Day—Poster Session 22-23 April 2002. Sixteenth National Conference on Undergraduate Research. Whitewater, WI, 25-27 April 2002. *Abstract Book*. Whitewater, WI: University of Wisconsin, 2002. 447.

— See Marie (Mickey) Crothers and David Jewett, same department.

Hallam, Betsy, undergraduate student. See Kevin Klatt, same department.

Hehli, Dan, undergraduate student. See Gregory Madden, same department.

Holnagel, Kristen, undergraduate student. See Kevin Klatt, same department.

Jewett, David, with **Christina Chrouser, Carly Dietz, Doug Flashinski, Lorna Everson, Derek Lee, Charles Burns**, and **Davin Mikkonen**, undergraduate students, same department. "Does Agouti-Related Peptide Increase Food Motivation?" Faculty/Student Research Collaborative Project.

—, with **D. L. Crankshaw**, Minneapolis VA Medical Center, **J. E. Briggs**, University of Minnesota, **C. J. Billington** and **A. S. Levine**, Minneapolis VA Medical Center, Minnesota Obesity Center, University of Minnesota. "Acute Effects of Intracerebroventricular Ethanol on Ingestive Behavior and Induction of cFos." Society for Neuroscience. San Diego, CA, Nov. 2001. *Society for Neuroscience Abstracts Vol. 31*. Published on CD-ROM.

—, with **Derek Lee, Carly Dietz, Christina Chrouser, Lorna Everson, Charles Burns** and **Kathryn Hamilton**, undergraduate students, same department. "The Pharmacological Specificity of Sucrose-Modulated, Opioid Behavioral Effects." Summer Research Experiences for Undergraduates Grant.

—, with **Doug Flashinski, Derek Lee, Carly Dietz, Lorna Everson, Charles Burns, Kathryn Hamilton**, and **Johanna Johnson**, undergraduate students, same department. "Behavioral Measures of Food Motivation." UW-Eau Claire Student Research Day—Poster Session 22-23 April 2002.

—, with **Johanna Johnson** and **Kathryn Hamilton**, undergraduate students, same department. "Does Ghrelin Increase Food Motivation?" Faculty/Student Research Collaborative Project.

— See Kathryn Hamilton, same department.

Johnson, Andrew, undergraduate student. See Blaine Peden, same department.

Johnson, Johanna, undergraduate student. See David Jewett, same department.

Keniston, Allen, with **Daniel Necci**, undergraduate student, same department. "Attending to In and Out of Context Unique Events in a Dichotic Viewing Task." UW-Eau Claire Student Research Day—Poster Session 22-23 April 2002.

—, with **Julie Slowiak**, undergraduate student, same department. "Payment and Monitoring as Factors in Adherence to Prescription Exercise." Faculty/Student Research Collaborative Project.

Keniston, Allen. See P. J. Kennedy, Counseling Services.

King, Anna and **Julie Mojsiej**, undergraduate students, with **Blaine Peden**, same department. "Do Undergraduates Understand Ethical Boundaries?" Sixteenth National Conference on Undergraduate Research. Whitewater, WI, 25-27 April 2002. *Abstract Book*. Whitewater, WI: University of Wisconsin, 2002. 435.

—. See Blaine Peden, same department.

Klatt, Kevin, with **Ashley Wegener**, undergraduate student, same department. "Treatment of Challenging Behaviors for a Child with Autism in a Community Setting." Faculty/Student Research Collaborative Project.

—, with **Connie Cameron**, **Roxanne Wolf**, and **Melissa Marsh**, undergraduate students, same department. "A Review of Target Behaviors in Published Research for Persons with Autism." UW-Eau Claire Student Research Day—Poster Session 22-23 April 2002.

—, with **Betsy Hallam**, **Kristen Holnagel**, and **Roxanne Wolf**, undergraduate students, same department. "An Analysis of the Research Settings in the Behavioral Literature." UW-Eau Claire Student Research Day—Poster Session 22-23 April 2002.

—, with **Melissa Marsh**, and **Connie Cameron**, undergraduate students, same department. "Assessing the Social Validity of Autism Outcomes." Faculty/Student Research Collaborative Project.

—, with **Mikhail Koffarnus**, **Cassie Welch**, and **Roxanne Wolf**, undergraduate students, same department. "The Effects of Establishing Operations on Preferences for Typically Developing Children." Faculty/Student Research Collaborative Project.

Klein, Luke, undergraduate student. See Gregory Madden.

Knesting, Kimberly, with **Juliana Smith**, undergraduate student, same department. "Lesbian, Gay, Bisexual, and Transgender Youth: Supporting Teachers in Supporting Schools." UW-Eau Claire Student Research Day—Poster Session 22-23 April 2002, Faculty/Student Research Collaborative Project.

—, with **Laura Lockner**, graduate student, same department. "Zero Tolerance Policies: Their Impact on Students' Perceptions of Safety in School." UW-Eau Claire Student Research Day—Poster Session 22-23 April 2002, Faculty/Student Research Collaborative Project.

Koffarnus, Mikhail, undergraduate student. See Kevin Klatt and Gregory Madden, same department.

Krueger, Krista, undergraduate student. See Gregory Madden, same department.

Lee, Derek, undergraduate student. See Kathryn Hamilton and David Jewett, same department.

Lisowe, Jessica, undergraduate student. See Blaine Peden, same department.

Lockner, Laura, graduate student. See Kimberly Knesting, same department.

Madden, Gregory, with **Ashley Wegener**, undergraduate student, same department. "Real Versus Hypothetical Rewards." UW-Eau Claire Student Research Day—Poster Session 22-23 April 2002.

—, with **Ashley Wegener**, **Jeffrey Bordenave**, **Bethany Raiff** and **Jamie Dake**, undergraduate students, same department. "Human Temporal Discounting When the Consequences are Real and Hypothetical." Mid-American Association for Behavior Analysis, Bloomington, IL—Poster Presentation. Nov. 2001.

—. "Drug-Intake Regulation and the Interplay Between Economic Costs and Benefits." *Experimental and Clinical Psychopharmacology* 9 (2001): 148-150.

—, with **Ellie Mauel**, undergraduate student, same department. "Effects of Varying Schedules of Food Rewards on Consumption and Response Output in

Pigeons.” UW-Eau Claire Student Research Day—Poster Session 22-23 April 2002, Faculty/Student Research Collaborative Project.

—, with **James Anderson, Mikhail Koffarnus** and **Rebecca Oppenheim**, undergraduate students, same department. “The Role of Informative Stimuli on Concurrent Reinforcement Schedule Sensitivity.” Faculty/Student Research Collaborative Project.

—, with **James Anderson, Mikhail Koffarnus, Rebecca Oppenheim, Kate Barutha** and **Dan Hehli**, undergraduate students, same department. “Do Pigeons Observe Informative Stimuli?” UW-Eau Claire Student Research Day—Poster Session 22-23 April 2002.

—, with **James Soldner, Ashley Wegener, Luke Klein** and **Carla Arnold**, undergraduate students, same department. “Human Behavior under Concurrent Schedules of Negative Reinforcement.” UW-Eau Claire Student Research Day—Poster Session 22-23 April 2002.

—, with **James Soldner**, undergraduate student, same department. “Pigeon Preferences Between Equivalent Unit Prices.” Mid-American Association for Behavior Analysis, Bloomington, IL—Poster Presentation. Nov. 2001. UW-Eau Claire Student Research Day—Poster Session 22-23 April 2002, Faculty/Student Research Collaborative Project.

—, with **James Soldner**, undergraduate student, same department. “The Role of Informative Stimuli on Concurrent Reinforcement Schedule Sensitivity.” Summer Research Experiences for Undergraduates Grant.

—, with **Jamie Dake, Bethany Raiff** and **James Soldner**, undergraduate students, same department. “The Microeconomic of Choice.” Summer Research Experiences for Undergraduates Grant.

—, with **Jennifer Gross** and **Krista Krueger**, undergraduate students, same department. “The Ideal Free Distribution and Human Group Matching.” Mid-American Association for Behavior Analysis, Bloomington, IL—Oral Presentation. Nov. 2001.

—, with **Krista Krueger** and **Jennifer Gross**, undergraduate students, same department. “The Effects of Group Size on Conformity to the Ideal Free Distribution.” UW-Eau Claire Student Research Day—Poster Session 22-23 April 2002.

—, with **Mikhail Koffarnus** and **Kate Barutha**, undergraduate students, same department. “The Role of Informative Stimuli on Concurrent Reinforcement Schedule Sensitivity.” Faculty/Student Research Collaborative Project.

—, with **Mikhail Koffarnus, Kate Barutha** and **Dan Hehli**, undergraduate students, same department. “Do Pigeons Observe Informative Stimuli?” Faculty/Student Research Collaborative Project.

—, with **Molly Ferron**, undergraduate student, same department. “Behaviorally Rating Shelter Dogs to Improve Adoptability.” UW-Eau Claire Student Research Day—Poster Session 22-23 April 2002.

—. “Old Concerns Revisited.” *Behavioral and Brain Sciences* 24 (2001): 543-544.

Marsh, Melissa, undergraduate student. See Kevin Klatt, same department.

Matzke, Kelly, undergraduate student. See Blaine Peden, same department.

Mauel, Ellie, undergraduate student. See Gregory Madden, same department.

Micale, Catherine, undergraduate student. See Lori Bica, same department.

Mikkonen, Davin, undergraduate student. See David Jewett, same department.

Miller, Pamela, undergraduate student. See Marie (Mickey) Crothers, same department.

Mojsiej, Julie, undergraduate student. See Anna King and Blaine Peden, same department.

Necci, Daniel, undergraduate student. See Allen Keniston, same department.

Oppenheim, Rebecca, undergraduate student. See Gregory Madden and Blaine Peden, same department.

Peden, Blaine, with **Doug Flashinski, Chris Gade** and **Andrew Johnson**, undergraduate students, same department. “Ethical Analysis of Behavioral Research on the Internet.” Summer Research Experiences for Undergraduates Grant.

—, with **Julie Mojsiej** and **Anna King**, undergraduate students, same department. “Undergraduate Understanding of Ethical Boundaries.” UW-Eau Claire Student Research Day—Poster Session 22-23 April 2002.

—, with **Julie Slowiak** and **Alicia Bear**, undergraduate students, same department. “Litter on College Campuses: Environmental Concern, Attitudes, and Reasons for Smoking and Non-Smoking College Students.” UW-Eau Claire Student Research Day—Poster Session 22-23 April 2002.

—, with **Katie Umberger** and **Kelly Matzke**, undergraduate students, same department. “Gender Differences in a Naturalistic Study of Decision-Making Behavior.” UW-Eau Claire Student Research Day—Poster Session 22-23 April 2002.

—, with **Rebecca Oppenheim** and **Jessica Lisowe**, undergraduate students, same department. “Examining the Acceptability of Different Justifications for Sexual Betrayal.” UW-Eau Claire Student Research Day—Poster Session 22-23 April 2002.

—. See Roury Boerner, Chris Gade, Megan Giles, Kathryn Hamilton, and Anna King, same department.

Plath, Tamara, undergraduate student. See Lori Bica, same department.

Raiff, Bethany, undergraduate student. See Gregory Madden, same department.

Reitmeier, Rebecca, undergraduate student. See Lori Bica, same department.

Schmitz, Shelia, graduate student. See Marie (Mickey) Crothers, same department.

Slowiak, Julie, undergraduate student. See Allen Keniston and Blaine Peden, same department.

Smith, Juliana, undergraduate student. See Kimberly Knesting, same department.

Soldner, James, undergraduate student. See Gregory Madden, same department.

Thalacker, Heidi, undergraduate student. See Marie (Mickey) Crothers, same department.

Umberger, Katie, undergraduate student. See Blaine Peden, same department.

von Károlyi, Catya. “Dyslexic Visual-Spatial Strength: Rapid Discrimination of Impossible Figures.” *Journal of Learning Disabilities* 34.4 (2001): 380-391.

—, with **E. Winner**, **D. Malinski**, **L. French**, **C. Seliger**, **E. Ross**, and **C. Weber**, Boston College. “Dyslexia and Visual-Spatial Talents: Compensation vs. Deficit Model.” *Brain and Language* 76 (2001): 81-110.

Wahlstrom, Jill, undergraduate student. See Kathryn Hamilton, same department.

Wegener, Ashley, undergraduate student. See Kevin Klatt and Gregory Madden, same department.

Welch, Cassie, undergraduate student. See Kevin Klatt, same department.

Wolf, Roxanne, undergraduate student. See Kevin Klatt, same department.

Wood, Stefanie, undergraduate student. See Lori Bica and Marie (Mickey) Crothers, same department.

PUBLIC SAFETY

Mr. David Backstrom, Director
119A Crest Wellness Center
715/836-2102

Hubbard, Douglas. “Bicycle Safety Patrol.” Extramural Grant. WI Department of Transportation. \$1,000.

—. “Pedestrian Safety Patrol.” Extramural Grant. WI Department of Transportation. \$1,000.

SCHOOL OF HUMAN SCIENCES AND SERVICES-ADMINISTRATIVE

Ms. Patricia M. Christopherson,
Interim Associate Dean
180 Human Sciences & Services
715/836-5038

Christopherson, Patricia, with **Debra King**, Continuing Education. “Community-Based Services Training Partnership for Adults.” Extramural Grant. U.S. Department of Education. \$213,000.

SCHOOL OF NURSING-ADMINISTRATIVE

Dr. Rita Sparks, Interim Associate Dean
101 School of Nursing
715/836-5287

Bottoms, Marjorie. See Rita Sparks, same department.

Sparks, Rita. “Advanced Education Nursing Traineeship 2002-2003.” Extramural Grant. U.S. Department of Health & Human Services. \$36,082.

—, with **Marjorie Bottoms**, same department. “Nursing Recruitment Program for Indians.” Extramural Grant. Department of Health & Human Services. \$273,080.

SOCIAL WORK

Dr. Nicholas Smiar, Department Chair
256 Human Sciences & Services
715/836-4435

Cornell-Swanson, LaVonne. See Steven Tallant, Academic Affairs-Administrative.

Gibbs, Len, with **E. Gambrell**, University of California Berkley. “Evidence-Based Practice: Counterarguments to Objections.” *Research in Social Work Practice* 12.3 (2002): 452-476.

—, “How Social Workers Can Do More Good than Harm: Evidence-based Clinical Reasoning, Avoiding Fallacies and Optimizing Critical Thinking” and “Assessing Risk in Social Work Practice.” *Social Workers’ Desk Reference*. Eds. A. Roberts and G. Greene. Oxford University Press, 2002.

—, with **E. Gambrell**, University of California Berkley. “Making Practice Decisions: Is What’s Good for the Goose Good for the Gander?” *Ethics in Human Sciences and Services* 4.1 (2002): 31-46.

Mueggenborg, Jaclyn, undergraduate student. See Keri Saxrud, same department.

Ryberg, Richard. See Keri Saxrud, same department.

Saxrud, Keri, Jaclyn Mueggenborg and **Michelle Washebek**, undergraduate students, with **Richard Ryberg**, same department. “Addressing the Digital Divide: Information Technology Integration and Nonprofit Agencies in the Information Age.” Sixteenth National Conference on Undergraduate Research.

Whitewater, WI, 25-27 April 2002. *Abstract Book*. Whitewater, WI: University of Wisconsin, 2002. 462.

Washebek, Michelle, undergraduate student. See Keri Saxrud, same department.

Wilson, Sara, undergraduate student. See Steven Tallant, Academic Affairs-Administrative.

SOCIOLOGY AND ANTHROPOLOGY-SEM I SOCIOLOGY-SEM II

Dr. Leonard Gambrell, Interim Department Chair
438 Schneider Social Science
715/836-2720

Beger, Randall R. See Jeremy Hein, same department.

Bonstead-Bruns, Melissa, with **Heather Dunn**, undergraduate student, same department. “Public Perceptions of Gendered Skill as They Relate to Occupational Role Assignments.” Summer Research Experiences for Undergraduates Grant.

Cassidy, Margaret, with **Mindy Meyer**, undergraduate student, same department. “Same-Sex Education in the United States.” Independent Study. Spring 2001. Research Paper.

Dunn, Heather, undergraduate student. See Melissa Bonstead-Bruns, same department.

Erger, Jeff, with **Melinda Miceli**, same department, and **Amanda Tompkins**, undergraduate student, same department. “Analyzing Identity Performance and Helping Behavior in Internet Communities.” Faculty/Student Research Collaborative Project.

—, with **Melinda Miceli**, same department, and **Amanda Tompkins**, undergraduate student, same department. “What Should I Do? Identity Performance and Helping Behavior in Lesbian Internet Communities.” UW-Eau Claire Student Research Day—Poster Session 22-23 April 2002, Summer Research Experiences for Undergraduates Grant.

Hein, Jeremy, with **Randall R. Beger**, same department. “Legal Adaptation Among Vietnamese Refugees in the United States: How International Migrants Litigate Civil Disputes During the Resettlement Process.” *International Migration Review* 35 (2001): 420-48.

—, with **Randall R. Beger**, same department. “Immigrants, Culture, and American Courts: A Typology of Legal Strategies and Issues in Cases Involving Vietnamese and Hmong Litigants.” *Criminal Justice Review* 26 (2001): 38-61.

—, Rev. of *Asian American Ethnicity and Communication* by William B. Gudykunst. *Choice* 38.10 (2001).

—, Rev. of *Fragmented Ties: Salvadoran Immigrant Networks in America* by Cecilia Menjivar. *American Journal of Sociology* 107 (2001): 268-69.

—, Rev. of *The State of the World's Refugees: Fifty Years of Humanitarian Action* by United Nations High Commissioner for Refugees. *Choice* 38.10 (2001).

—, Rev. of *To Be An American: Cultural Pluralism and the Rhetoric of Assimilation* by Bill O. Hing. *Ethnic and Racial Studies* 24 (2001): 884-85.

Meyer, Mindy, undergraduate student. See Margaret Cassidy, same department.

Miceli, Melinda. See Jeff Erger, same department.

Tompkins, Amanda, undergraduate student. See Jeff Erger, same department.

SPECIAL EDUCATION

Dr. Vicki Snider, Department Chair
243 Human Sciences & Services
715/836-2112

Richard, Darrell, graduate student. See Vicki Snider, same department.

Snider, Vicki, with **Darrell Richard**, graduate student, same department. “Creativity and the Learning: Does a Correlation Exist?” Faculty/Student Research Collaborative Project.

Stephens, J. Todd. See Kathryn Anderson, Family Health Nursing and Katherine A. Rhoades, Foundations of Education.

STUDENT SERVICES

Dr. William Harms, Associate Vice Chancellor
105 Hilltop Center
715/836-4810

Harms, William, with **Lisa Mc Intyre**, Kinesiology and Athletics. “NYSP 2001.” Extramural Grant. Department of Health & Human Services. \$96,750.

—. “National Youth Sports Program (Food).” Extramural Grant. U.S. Department of Education. \$95,000.

WOMEN'S STUDIES

Dr. Jennifer Shaddock, Interim Coordinator
55 Brewer Hall
715/836-5717

See, Patti. “Girls’ Night Out.” *13th Warrior Review* 2.4 (2002): 1-4. <<http://www.asteriusonline.net/13thWR/issue04/see.htm>>.

—. “Good Divorce? Good Gun Fight?” *Sexing the Political: A Journal of Third Wave Feminists on Sexuality* (1 Feb. 2002): 1. <www.sexingthepolitical.org>.

Turell, Susan C, with **C. R. Thomas**, Houston Area Women’s Center. “Where was God? Utilizing Spirituality with Christian Survivors of Sexual Abuse.” *Women and Therapy* 24 (2001): 133-147. *The Invisible Alliance: Psyche and Spirit in Feminist Therapy*. Ed. Ellyn Kaschak. New York: Haworth Press, 2001.

INDEX

A

Abootalebi, Ali 54
Akiba, Ken 52
Allen, Jennifer 32, 33
Allen, Terry 49
Alvarez, Elizabeth 55, 56
Anaya, Stephanie 28, 29
Anderson, James 55, 59
Anderson, Kathryn Hoehn 31
Anderson, Stephanie 47, 48
Arnold, Carla 55, 59
Asuquo, Chris 32, 33
Avin, Rose-Marie 27
Awe, Thomas 47, 48, 53

B

Balas, Andrew 48
Balding, Terry 14
Barganz, R. 27, 31
Barka, Casey 53
Barnaby, Meghan 23
Barth, Bradley 48
Barth, Robert 35
Barutha, Kate 55, 59
Bauer, Emily 20, 21
Bawden, Tim 35
Bear, Alicia 55, 60
Beger, Kate 28, 33
Beger, Randall R. 61, 62
Belanger, Rebekah 28
Beranek, Luke 41
Bergmann, Marilyn 23, 46
Bergmann, Thomas 45
Bergstrom, Nicole 39, 41
Berkowitz, Sara 55, 56
Beuning, Kristina 14
Bica, Lori 55
Bischel, Christie 23, 24
Bissonnette, David 43
Bodin, Derek 48
Boerner, Roury 56
Bogstad, Janice 45
Bohlken, Megan 23, 24
Bolton, Stacey 32, 33
Bonis, Josh 14, 18
Bonstead-Bruns, Melissa 61
Bordenave, Jeffrey 56, 58
Boster, Daniel 28
Bottoms, Marjorie 61
Bowen, Katie 35, 36
Bowlds, Tara 51, 52
Boyce, C. L. 14, 15

Boyum, Richard 27
Bradford, Marc 36, 38
Bredle, Don 44, 45
Bremer, Lindsay 14, 19
Broege, Aaron 15, 18
Brown, Erin 36
Brown, Rebecca 23, 24
Bruss, Leslie 51, 52
Buck, Leon 48, 54
Buerkle, Alex 15
Bulger, Sean 44
Bune, Mark 56
Burich, Stacy 20, 23
Burns, Charlene 52
Burns, Charles 56, 57
Burton, Bradford 41
Bushnell, Jack 28
Butler, Amanda 28
Butterfield, Shane 43
Byers, Jeremy 43

C

Cameron, Connie 56, 58
Cannon, Philip 20, 21
Carello, Christy 15, 16
Carlisle, Joshua 41
Carlson, Stephanie 45, 46
Carlson, Steven 44
Carney, Michael 20, 21, 22
Carpenter, Linda 23, 31
Carroll, Jan 28
Carroll, Wayne 27, 28
Carter, Laura 56
Cassidy, Margaret 61
Chadha, Shyam 48
Chang, Xiong Pao 24, 25
Charest, Renee 23, 24
Chevalier, Steve 15, 17
Chmielowiec, Jacob 41, 42
Christopherson, Michael 13
Christopherson, Patricia 60
Chrouser, Christina 44, 56, 57
Clark, Allyson 54, 55
Clark, Mark 23
Clepper, Angela 24, 25
Conery, Erin 28, 50
Conklin, Daniel 15
Cornell-Swanson, LaVonne 11, 61
Covi, Ben 25
Cox, Jennifer 48
Cronje, Ruth 28, 29
Crothers, Marie (Mickey) 56
Crouse, Gale 32, 33
Culligan, Tara 15, 17

D

DaCosta, Maria 27, 47
Dahl, Angie 33
Dahlin, Lisa 31, 32
Dahms, Kimberly 44
Dake, Jamie 56, 58, 59
Davids, Kim 31, 32
Day, Patrick 33
DeChaine, Ryan 36, 37, 38, 39, 40
Deng, Feng 27, 28
Dennis, Jeral 15, 16
Dernbach, Amber 11
Dettloff, Carter 41
Dietz, Carly 56, 57
Dillivan, Christy 36
Doering, Sara 32, 33
Don, Gary 49, 51
Dorsey, Alexis 56
Dorsher, Michael 24
Dretzke, Beverly 56
Drucker, Stephen 20
Ducksworth-Lawton, Selika 43
Duerst, Lindsey 54, 55
Dunham, Douglas 53
Dunlap, William P. 27, 35
Dunn, Heather 61
Durni, Jed 36, 37

E

Ecker, Robert 43
Elgindi, Mohamed 48
Erger, Jeff 61
Evans, Matthew 53
Everson, Lorna 57

F

Faherty, Darren 45
Falkenberg, Karen 12
Faulkner, Douglas 36
Feit, Amy 23
Fenner, Clinton 20, 22
Ferron, Molly 57, 59
Finup, Michelle 23
Fischer, Joanna 24, 25
Flashinski, Doug 57, 59
Flunker, La Nette 46, 47
Foley, Corinna 13
Forbes, Jack 36, 40
Ford, Lyle 53
Forkrud, Kathryn 31
Foust, J. Brady 36, 40
Fox, Derek 20, 21
Frankenberger, William 44
Freborg, Kaija 12

Freitag, Rodd 54
French, Andrew Mykle 49, 50
Fricano, Joseph 33
Fullan, Amanda 29
Fuller, David 28
Funk, Jennifer 23

G

Gade, Chris 57, 59
Gallagher, Joshua Patrick 49, 50
Gambrell, Leonard 54
Gannon, Erin 21, 23
Garland, Max 29
Garney, Melissa 15, 16
Gehring, Melissa 43, 55
Geissler, Emily 31, 32
Geurkink, Alicia 24, 25
Giamati, Claudia 48
Giles, Megan 57
Gilles, Emily 20, 21
Goertz, Matthew 21, 22
Gordee, Sarah 41, 42
Gough, Robert 43
Goulet, Marc 48, 54
Graf, Natalie 23, 24
Gray-Mash, Cynthia 34
Greiber, Jennifer 31
Greider, Brett 52
Groeschl, Trisha 44
Grorich, Sean 52
Gross, Jennifer 57, 59
Gross, Jody 49
Gueldenzopf, Samantha 31, 32
Guell, Erin 57
Gullickson, Glen 21
Gustad, Katie 33

H

Hafele, Brent 24, 25
Hafeman, Lori 36, 40
Hafen, Susan 24, 25
Hahn, Patrick 36, 38
Haley, Grace 23, 24
Halfen, Jason 20, 21, 22
Hall, K. 15, 16
Hallam, Betsy 57, 58
Hamilton, Kathryn 56, 57
Hansen, Lisa 41
Hanson, Betty 11
Hanson, Charles 29
Harms, William 62
Harper, Haley 23
Hartnett, Sean 36, 39, 40
Hartsel, Scott 21
Harvieux, Sarah 11, 42
Haughton, P. V. 36, 38

Havholm, Karen 38, 39, 40, 41, 42
Hawkins, Katherine 16, 19
Hayward, Sara 20, 21, 22
Hehli, Dan 57, 59
Heidtke, Erin 36, 40
Hein, Jeremy 61
Heitmann, David 15, 16
Heizer, Heidi 15, 16
Her, Kang Bao 34, 35
Hildebrand, John 29
Hildebrandt, Rebecca 24, 25
Hisrich, Joseph 11
Ho, Tim 16
Hochstein, Gloria 29
Hoff, Nuria I 33
Hoff, Paul J 33
Hoffman, Keith 29
Hollon, Robert 27, 35
Holm, Jessica 24, 25, 33, 34
Holman, Danah 20, 21
Holmen, Jay 12
Holnagel, Kristen 57, 58
Holte, Dawn 49, 51
Hood, Gene 14
Hooper, Robert 42
Hopp, Carolyn 48
Horton, Joseph 29
Hostager, Todd 46
Howe, Alicia 16, 19
Hoy, Matthew 29
Hubbard, Douglas 60
Hudock, Alyson 15, 16
Hulett, Taina 29
Huntington, Leslie 45
Huntoon, Eliza 13
Hutchinson, Rebecca 28, 48
Hydo, Sharon 12
Hyduke, Erin 12

I

Ihinger, Phillip 35, 41, 42
Ikuta, Juanita 35
Imdieke, Brian 12
Iribarren, Mary 33
Irwin, Melissa 44
Ishigaki, Noriko 36, 39

J

Jackson, Steve 43
Jacobsen, Bill 11
Jadack, Rosemary 12
Jaeger, Theodore 48, 53
Janik, Daniel 16
Janiszewski, Dawn 24, 25
Jensen, Sara 52
Jerz, Dennis 29, 30

Jewett, David 57
Johnson, Andrew 57, 59
Johnson, April 42
Johnson, Dale 45, 46
Johnson, Heidi 24, 25
Johnson, James 35, 54, 55
Johnson, Johanna 57
Johnson, Stephanie 53
Johnson, Timothy 16, 19
Jol, Harry 36, 39, 41
Jones, David 29
Jones, Kevin 26
Jones, Taryn 23, 24

K

Kelly, Erna 28, 29, 30
Kemp, Theresa 29
Keniston, Allen 27, 58
Kennedy, Josh 27
Kennedy, P. J. 27, 56
Kevin, Brian 39
King, Anna 58, 60
King, Debra 26, 60
King, Fred 21
Klatt, Kevin 58
Klein, Luke 58, 59
Kleiner, Ross 38
Kleintjes, Paula 16, 17, 18
Kluge, Shana 24, 25
Kluiber, Alexander 15, 16, 17
Knesting, Kimberly 58
Knippel, Paul 41, 42
Koffarnus, Mikhail 58, 59
Kolb, Fred 28
Kollwitz, Jack 53
Koloen, Glory 54, 55
Koroghlanian, Carol M. 35
Kosower, Paul 49
Kraai, David 24
Kramer, Jon 35, 38
Kranig, Danica 15, 17
Krist, Amy 17
Krueger, Krista 58, 59
Kryzer, Jaycelyn 25
Kuechenmeister, Bobby 33
Kyle, Shawn 38

L

La Blanc, April 30
La Rue, Mary 45
Lahner, Joshua 39
Lamanna, Chris 17, 18
Lambert, Laura 43
Langer, Robert 48
Larson, Kevin 17
Lassa, Jenn 14

LaVenture, Mary 14
Lawrence, Robert 25
Lee, Caitlin 11, 27, 28
Lee, Derek 57, 58
Lee, Mary 11
Lefler, Jennifer 33, 34
Lehmann, Justin 17, 18, 52
Leinberger, Kelly 17, 18
LeMay, Michael 25, 26
Leong, Chong Hoong 48, 53
Lester, Scott 46
Lewis, David 21
Licht, Benjamin 55
Lind, Olaf 52
Linder, Heather 17
Lindseth, Martina 33
Lischefski, Joel 21
Lisowe, Jessica 58, 60
Litka, Nicole 23
Lloyd, Matt 16, 17
Lobe, Christina 13
Lochner-Wright, Cheryl 20
Lockner, Laura 58
Loeb, Karen 30
Loertscher, Sara 52
Long, Kimberly 39
Lonzarich, David 17
Lor, Tua 27, 28
Lorge, Christina 54, 55

M

Madden, Gregory 58
Mahoney, J. Brian 42
Majstorovic, Steven 54
Manning, Carmen 30
Manske, Westley 21, 22
Marcks, Kelly 30
Markgraf, Jill 45
Markgraf, Karl 20
Marsh, Melissa 58, 59
Mattson, Lucretia 12
Matzke, Kelly 59, 60
Mauel, Ellie 58, 59
Mc Cartney, Chad 12
Mc Ellistrem, Marc 21, 53
Mc Guinness, Patrick 36, 39
Mc Intyre, Lisa 45, 62
Mc Intyre, Sue 27, 35
McDaniel, Jessica 31, 32
McDonnell, Daniel 37, 39
McGinnis, Mark 50
Meehean, Joe 25, 26
Mehlberg, Sandra 53
Meisel, Jennifer 17, 19, 39
Mendez-Gorski, Guillermo 29, 30
Meyer, Amalie 31

Meyer, Gregory 13
Meyer, Matt 25, 26
Meyer, Mindy 61, 62
Micale, Catherine 55, 59
Miceli, Melinda 61, 62
Mikkonen, Davin 57, 59
Miller, Pamela 56, 59
Miller-Rodeberg, Marcia 22
Minkus, Helaine 39
Moch, S. D. 31
Moe, Becky 27
Moe, Eulalie 25, 39, 40
Mojsiej, Julie 58, 59, 60
Moll, Dianna 31, 32
Monk, Deirdre 14
Moon, Tricia 12
Moore, Heather 21, 22
Moore, Thomas 25
Morton, Chris M. 37, 38, 39
Moua, Maiknue 24, 25
Mueggenborg, Jaclyn 61
Mueller, Carrie 39, 40
Mueller, Hanni 15, 17
Muller, Cheryl 22
Murphy, Rafael Pumarejo 54, 55
Murphy, Vanissa 50
Myers, Anthony 53, 54

N

Nahm, Abraham 12, 46
Najacht, Zachary 17
Necci, Daniel 58, 59
Nelson, Lars 21, 22
Nelson, Robert 13
Nimke, Richard 50
Norquist, Carolyn 17, 18
Nyhus, Karyn 24

O

Oates, Scott F 30
Oberly, James 43
Oksiuta, Lee 17, 18
Oliphant, Jeff 45
Oliveira, Cristiana 27, 28
Ollendick, Casie 39
Olson, Caleb 30
Olson, Douglas 13
Oppenheim, Rebecca 59, 60
Ortery, Ken 27
Orzech, Corinne 39, 40
Ovans, Ingrid 17, 18
Owen, Jennie 24

P

Pace, Joel 30

Palm, Richard 39
Pathos, James N. 46, 47
Patterson, Donald 50
Patterson, Matthew 30
Paulson, Benjamin 42
Pawluk, L. M. 16, 18
Peck, Sue 12
Peden, Blaine 56, 57, 58, 59
Pederson, Jane 43
Penkava, Michael 48
Peot, Sarah 18, 19
Perkins, Daniel 25
Peters, Elizabeth 33
Peters, Gretchen 50
Peterson, Geoff 55
Peterson, Heather 25
Peterson, John 53, 54
Peterson, Julie 25, 29
Phillips, Andrew 25, 26
Phillips, James 20, 22
Phillips, William H 30
Pierson, Kim 53
Pintero, Eugenio 43
Plath, Tamara 56, 60
Platt, Jennifer 52
Poll-Sorensen, Toni 15, 45
Porschien, Don 39, 40
Potts, Amanda 51
Poulos, Jenna 23, 24
Prall, David 18, 19
Preis, Hilary 18
Prindiville, Sarah 42
Przybylski, Sarah 25

Q

Quinn, Patricia 11

R

Radmer, Katherine 24
Raiff, Bethany 58, 59, 60
Rasar, Lee Anna 13
Ray, Amy 13
Ready, Kathryn 46
Reid, Rebecca 43
Reiter, Amanda 36, 39
Reitmeier, Rebecca 56, 60
Retherford, Kristine 24
Reynolds, Allison 13
Reynolds, Kate Mastruserio 33
Rhoades, Katherine A 35
Richard, Darrell 62
Risberg, Rebecca 13
Robertson, Nicholas 20, 22
Rogness, Donald 22
Rohrer, Joseph 18, 19
Romary, Julie 12

Rosen, Paul 51
Rowe, Andrea 25
Rowlett, Lori 52
Ruhde, Tim 17, 18
Running, Garry 37, 38, 39, 41
Rutten, Tobi 36, 38, 40
Ryberg, Richard 61

S

Sahlhoff, Kathleen 32
Sahyun, Mel 22
Sampson, W. Robert 25
Sandgren, Molly 35, 42
Sandstrom, Paul 36, 39, 40
Santos-Phillips, Eva 32, 33
Sapetta, Kimberlee 33
Satz, Ronald 11
Saxrud, Keri 61
Scales, Jon 18
Schaffer, David 28
Schleusner, Timothy 22
Schmitt, Nola 32
Schmitz, Jonathan 24
Schmitz, Sheila 56, 60
Schmukler, Glenn 14, 18
Schneider, Katherine S. 27, 56
Schreck, Sarah 40
Schulta, Danielle 22, 23
See, Patti 11, 62
Seifert, Rubin 36, 40
Sekorski, Amy 18
Sen, Asha 30
Sepnafski, Megan 27
Sheikholeslami, Mehdi 12
Showsh, Sasha 18
Shurtleff, Jeff 34, 35
Siemer, Rebecca 22
Sims, Judy 24, 25
Slattery, Sara 13, 14
Slowiak, Julie 58, 60
Smith, Alex 48, 54
Smith, Carter 32, 33
Smith, Juliana 58, 60
Snider, Vicki 62
Solberg, Larry 24
Soldner, James 59, 60
Solheim, Karen 32
Sparks, Billie 49
Sparks, Rita 61
Specht, Jeffrey 51
Sporrong, Jill 16, 18
Stecher, George 53
Steffen, Theresa 26
Stephens, J. Todd 31, 35, 62
Stevens, Douglas 26
Stevens, Joel 36, 40

Stevenson, Daniel 26
Stolder, Mary Ellen 52
Stovey, Patricia 43
Strauch, Casey 46
Strohschänk, Johannes 34
Strouthes, Daniel 40
Swanepoel, Lucas 54, 55
Swanson, Andrew 53
Syverson, Kent 42

T

Taft, Lois 52
Tallant, Steven 11
Tamke, Karolyn 52
Tanyi, Ruth 12
Taylor, Bruce 11, 30
Taylor, Wilson 19
Terwilliger, Steve 14
Tetzloff, Jason 11, 43
Thalacker, Heidi 56, 60
Theo, Lisa 36, 39, 40
Thesing-Ritter, Jodi 11, 44
Thevenin, Dominique 34
Thom, Rachel 30
Thomas, Paul 54
Thorsen, Leah 24, 25
Tinker, John 42
Tlusty, Roger 35
Tomkovick, Chuck 46, 47
Tompkins, Amanda 61, 62
Traczyk, Patty 47
Treague, Jeremy 42
Trushenski, Nicole 19
Tsantir, Dean 33, 34
Tubbs, James 55
Turell, Susan C 62
Turtinen, Lloyd 19, 21
Tyberg, Seth 43
Tysver, Tom 18, 19

U

Umberger, Katie 60
Unseth, Aaron 25

V

Vahlbusch, Jefford 34
Valero, Jose 34
Vance, Jim 11
Vanderloop, Robert 50, 51
Viavattine, A. P. 38, 40
Vogeler, Ingolf 40
Vogler, Abigail 17, 19
von Károlyi, Catya 60
Vue, Charles 11

W

Wahlstrom, Jill 57, 60
Wahome, Kimamo 11
Wainscott, Kait 27
Walker, James 48, 49
Wallace, Chris 14, 19
Washebek, Michelle 61
Waterhouse, Joe 25
Waters, Matt 34, 43
Watson, Sarah 34
Wegener, Ashley 58, 59, 60
Weiher, Evan 18, 19
Weil, Michael 20
Weiland, Theodore 21, 22
Weisheipl, Melissa 41, 42
Weiss, Michael 53, 54
Welch, Cassie 58, 60
Welch, Karen 28, 29, 30
Wells, Nathan 22
Wendler, M. Cecilia 52
Wendt, Anne 30
Wendt, Elaine 32
Werner, Joan Stehle 12
Whitcomb, Robert 26
Whitfield, Scott 54
Wick, Michael 26
Wiegert, Nicholas 16, 20
Williams, Daniel 26
Wilson, Sara 11, 61
Winkler, Eric 54, 55
Wittrock, Darwin 20
Wolf, Roxanne 58, 60
Wood, Stefanie 56, 60
Wurpts, Sally 24

Y

Yakubov, Ravshan 28
Yang, May 32
Yang, Meng 29, 31
Yang, Thao 23
Yarushkin, Dmitry A. 45, 47
Yassin, Sandy 36, 40
Yefimov, Oleg 27, 33
Yelkur, Rama 27, 46, 47
Young, Barbara 51
Young, Edward 28
Young, Jerry 51

Z

Zahler, Ryan 36, 41

Zaun, Steven 36, 41
Ziehl, Kara 34
Zighelboim, Stephanie 34
Zimmer, Hannah 50, 51
Zlotocha, Seth 35
Zopp, Amber 22, 23
Zukowski, Susan 55
Zwygart-Stauffacher, Mary 13, 52

Published by
Office of Research and Sponsored Programs
University of Wisconsin-Eau Claire
Human Sciences and Services 161
Eau Claire, WI 54702



University of Wisconsin-Eau Claire