

[Parents and Family](#)

[Residence Hall Links](#)

[Important Dates](#)

[Past Nuggets](#)



In this Issue:

Family Welcome Tent

Money Matters

Parents Weekend

Early Arrival

Residence Hall Move-in

Textbook Rental

Blugold Family Connection Gifts

Alcohol Reminder

Nuggets Subscription Info

**BLUGOLD NUGGETS
AUGUST 2011**

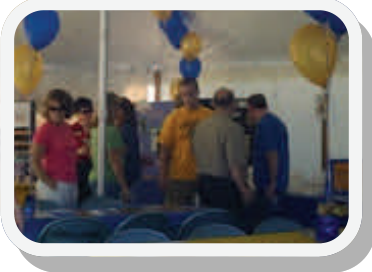
Welcome to the special “just before move-in” edition of the Blugold Nuggets! This issue is designed to help you make some of the last minute decisions before you come to campus. We’d love to see you at the Welcome tent. The September issue of the Nuggets will come the first week of classes – happy move in! This is a subscription service so if you’d like to share it with other family member or stop receiving just click on [subscribe](#) or [unsubscribe](#).

**BLUGOLD FAMILY CONNECTION
WELCOME TENT
FRESHMEN MOVE-IN DAY—
THURSDAY, SEPTEMBER 1ST - 10AM—4PM**

CAMPUS MAP

Dates to Remember

- Thursday, Sept. 1st
Residence Hall Move In
- Thursday, Sept. 1st
Blugold Family Connection Welcome Tent
- Friday, Oct. 21 - 23
Parents Weekend



Get your questions answered and your thirst quenched! Moving can be exciting or emotional, but certainly a busy ordeal. Take a break with us in the Blugold Family Connection Family Welcome Tent, on **Thursday, September 1st from 10am—4pm.**

University faculty and staff members available to fill you in on everything you want to know about UW-Eau Claire. There will be Parents' Weekend information, refreshments, area maps, visitor guides and much more. Look for the tent on upper campus between the tennis courts and Towers Hall. We look forward to seeing you there!

MONEY MATTERS



Business Office

Paying Tuition – Fall Semester 2011

Payment for Fall Semester 2011 is due in full by *Friday, September 30, 2011* to avoid finance charges and administrative service fees.

If the student elects to participate in our partial payment plan, one half of the bill is due on *Friday, September 30st* to avoid an administrative service fee. The remaining half, plus finance charges, are due on *Friday, October 21, 2011*. Students will be sent emails to their UWEC email account explaining how they will be able to obtain their bill in MyBlugold CampS.

For more information about billing please visit the [Business Office website](#).

Fall 2011 Student Account Refunds

Starting **Fall Semester 2011**, the Business Office will offer the following options for student account refunds:

1. Directly deposit your refund into a bank account. You will be emailed Direct Deposit instructions in **August**.
2. If you are **not** signed up for Direct Deposit:

*Overpayments that occur **during** the first two weeks of the term, will be automatically mailed to you in check form to your mailing address on file.

*Overpayments that occur **after** the first two weeks of the term, may be picked up in check form in the Business Office, S108. If your refund check is not picked up within 10 days of it being applied to your student account, the check will be mailed to your mailing address on file.

NOTE: It will be important that you put aside \$100.00 of your refund for your next term's registration deposit. The Cashier's Office is unable to deduct a portion of your refund for a future term payment.

Students will be emailed specific instructions on these options to their UWEC email account. It will be extremely important that students review these options and follow the instructions to ensure that they receive their refund check in a timely matter. [Click here for more information](#).

PARENTS WEEKEND

Greetings UWEC Families! The annual [UWEC Parent's Weekend](#) is close at hand. This year we invite you all to join us Friday, October 21st- Sunday, October 23rd for some [spectacular events and perennial favorites](#).

Information will be mailed out towards the end of summer. It should be another fun year for Parent's Weekend, and we are looking forward to having you here to participate in our fun events. We hope to see you there!



TEXTBOOK RENTAL

We had several questions about the textbook program at recent "Send Off Parties" so we decided to share some thoughts on the textbook program:

- "Renting" – is somewhat of a misnomer because you don't pay for these books individually, rather the cost of using them is included in the student segregated fees (so you won't see a separate item on a bill anywhere for books borrowed in this program).
- Some rental books may be available as "used" or "new".
- You may be required to purchase some books – but if it is more than \$150-\$250 this first semester please double check to see that you've ordered them correctly and are not purchasing books you can "rent".
- If your student wants to order books ahead of time the instructions are on page 72 of the Parent Binder from orientation or <http://www.uwec.bncollege.com>. For those students who like to get things done ahead of time and want to check another thing off their list – this might be a good option.
- Some students prefer to wait until they are on campus to select their books themselves. While the bookstore is busy and lines can be long – those students tell us the advantage is that they can look through the books themselves and select ones that don't have highlighting or are highlighted as they would highlight.

Textbook Info

- [Order your textbooks](#)
 - [Textbook Rental Catalog](#)
- One student even told us he waited until the first day of class to make sure that he was keeping the class before he got his books – this may only work for a limited number of students and is not recommended by us.



EARLY ARRIVAL

Early arrivals are only allowed for people with significant extenuating circumstances as we are training our staff and preparing our halls prior to the day we open. Therefore it is necessary to limit the number of people who arrive early or we are not prepared for our opening. Off-campus jobs and student organization activities are traditionally not reasons we have been able to accommodate. Please e-mail Deb Newman at newmandl@uwec.edu if you want to make an early arrival request and provide information about the reason for the request so an informed decision can be made. Typically a decision is returned within two business days.



Please remember that if you are on campus early, many offices and departments will not be open as it is throughout the academic year. Please check into the hours of operation of any offices or departments you may need services from while you are on campus.

Meal plans begin on September 1st so if your student is provided food through an early arrival group you will be responsible for meals, and limited staff may restrict late evening hour access to the residence halls

RESIDENCE HALL MOVE IN

The residence halls will open on Thursday, September 1 for freshmen and transfer students and begin Friday, September 2nd for upper class students. Please arrive during your student's pre-assigned move-in time in order to help alleviate traffic congestion. Notice of the time will be sent to you in late July. If you have a legitimate conflict with moving in during that specific time, please contact the [Housing & Residence Life Office](#) at 715-836-3674 or by [email](#).

Hall Raisers will be available to assist with moving in on September 1st. If your student has been assigned to live in the hotel for the Fall 2011 term, assignment and roommate information will be mailed in early August.

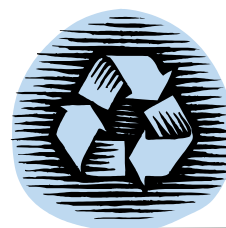
[Click here for more hotel information.](#)

[Click here for more information on the average measurements of our furniture.](#)

Move in Recycling:

Housing & Residence Life strives to encourage sustainable living on campus. One way that we promote sustainability is through programs like Cardboard Corral. This program collects and recycles cardboard containers discarded by students during move-in. Last year we were able to divert over 12 tons of cardboard from landfills! Signs will be prominently displayed directing students and parents to the white tents which function as our "corrals." Student workers will be waiting there to collect and stack cardboard.

[Please help the campus go green by participating!](#)



BLUGOLD FAMILY CONNECTION GIFTS

Looking for a way to make your student feel special, or to pick them up during a rough time? Send a gift from the [Blugold Family Connection](#).

A selection of flower and balloon bouquets as well as fresh bakery items prepared right here on campus are available for delivery. We also offer other gift items, including; UWEC aluminum water bottles, UWEC teddy bears and special holiday gifts. [You can now order and pay online](#), we take care of the rest.

Delivery is made to the front desk of your student's residence hall on your requested delivery date. Off campus students can pick their treats up in our office in Schofield Hall. For a complete list of our gift items please visit our [website](#) or contact us with any questions at family@uwec.edu

Dates to Remember

- Late—August:** Bill Available on My Blugold CampS
- September 1:** Freshman Move-In to Residence Halls
- September 2:** Phase II Orientation (For Students only)
- September 5th:** CubeFest Weekend
- September 6th:** First Day of Classes
- September 6th:** Last Day to Select a Meal Plan
- September 12th:** Last Day to Add a Full Semester Course
- September 19th:** Last Day to Drop a Full Semester Course
- October 21-23rd:** Parents Weekend

ALCOHOL REMINDER

In high school I was an honor student, a three sport athlete, drum majorette of the band, student council VP, and involved in everything else I had time for. I also had a part time job and would never in a million years have embarrassed me or my family by drinking and getting kicked out of sports or activities in high school. Yet within the first few weeks of college – I followed a young man I thought was cute to a party and I'm not proud to say I started to drink underage.

Why am I telling you this? It's certainly not to brag about high school or embarrass myself with bad choices in college. It's possible that your student is a lot like me and neither you nor they expect them to start drinking alcohol when they get here and you may not have taken the time to talk with them about alcohol in college yet. This is my personal plea to you to use the booklet Chancellor Levin-Stankevich sent to you this month even if you don't expect your child to drink. Many will make the choice not to drink, most that choose to drink will do so responsibly, but unfortunately some may choose to drink dangerously.

Thank you to the 530 of you who completed our survey prior to receiving the booklet from the Chancellor. Most of you (55%) say that using any alcohol would not be okay with you and yet 68% expect that your student will try alcohol at some point this first year. [Click here for additional survey results.](#)

The Center for Alcohol Studies and Education operates under and educates students using ***the Harm Reduction Philosophy***. This differs from the "abstinence only" message they likely received in high school and it means that while we don't condone illegal behavior. We choose to educate students even before they can drink legally (much like they take driver's education classed before they are legal to drive). We do this because our statistics tell us that 78% of our students have tried alcohol in the last year and we want them to make informed choices. Here is what we try to convey through our programs, demonstrations, and classroom presentations:

- We teach them what a [standard drink](#) is and how to measure it.
- We teach them how to figure out their [BAC \(Blood Alcohol Concentration\)](#)
- We talk about the physical effects of alcohol at different [BAC levels](#).
- We discuss the "[point of diminishing returns](#)" and how adding more alcohol at a certain physiological point actually doesn't improve the "buzz" is just further impairs you and increases chances of negative consequences.
- We ask them to consider carefully whether their perceptions of "everyone is doing it" are true - it isn't (click here to see more)
- We highlight all of the other amazing experiences they can take advantage of on campus

Students accepted to UW-Eau Claire have an established pattern of being successful, but hopefully my story helps you see how easy it is for opinions to change about alcohol and compels you to continue conversations with your student through their college experience. *We share the goal that your student has the most amazing college experience possible, and that they remain safe and healthy.*

Respectfully submitted by: Jennifer Lee
Director, Center for Alcohol Studies and Education

FACTS ON TAP

Thursday, September 8th — 5:00pm

Facts on Tap is a campus-wide event designed to challenge first year students' expectations about alcohol use at UW-Eau Claire. This award winning, interactive program highlights the perceived use, abuse and consequences related to alcohol at UW-Eau Claire

Guest Speaker: Mike Green

BLUGOLD NUGGET SUBSCRIPTION INFORMATION

The Blugold Nuggets is a monthly online newsletter that is sent to families and friends of students attending UW-Eau Claire. We do use an email list service to send the newsletter, this service remove emails that bounce back or are blocked. If you notice that you have not received the newsletter please contact us at family@uwec.edu and we will add you to the list. You can change your email address or unsubscribe at any time by clicking on the links below.

[Subscribe](#)

[Unsubscribe](#)



Excellence. Our Measure, Our Motto, Our Goal.

Student Affairs Office • Schofield Hall 240 • University of Wisconsin-Eau Claire • Eau Claire, WI 54702-4004
Blugold Family Connection • Schofield Hall 30 • University of Wisconsin-Eau Claire • Eau Claire, WI 54702-4004

Phone: 715/836-5110

Updated: August 24, 2011

Questions / Comments: [Blugold Family Connection](#)

Jennifer Lee , Director, Blugold Family Connection, Blugold Nuggets Editor

Copyright © 2011 [UW-Eau Claire](#) and the Board of Regents of the [University of Wisconsin System](#)